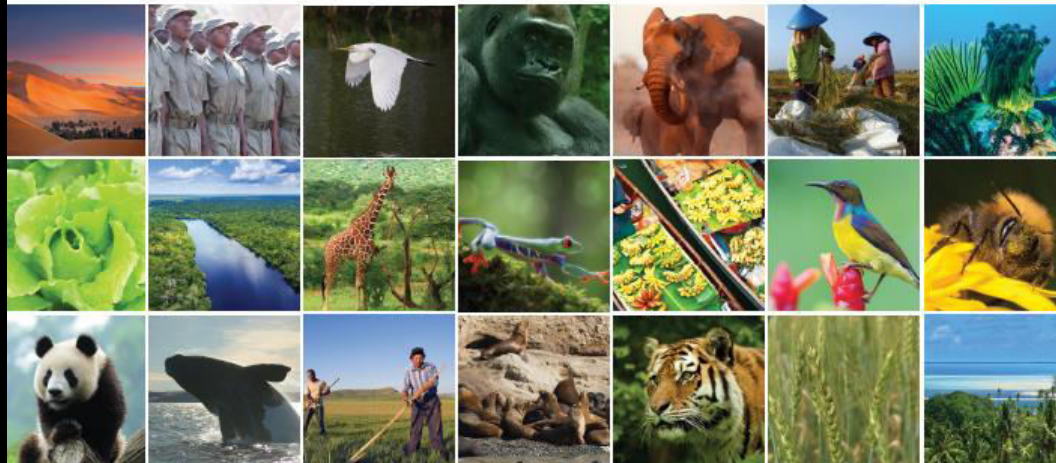




GEF-7
Biodiversity
Strategy



 **gef** GLOBAL ENVIRONMENT FACILITY
INVESTING IN OUR PLANET



GEF Support to Protected Areas

Mark Zimsky

GEF Biodiversity Coordinator

Senior Biodiversity Specialist

Thursday November 22, 2018

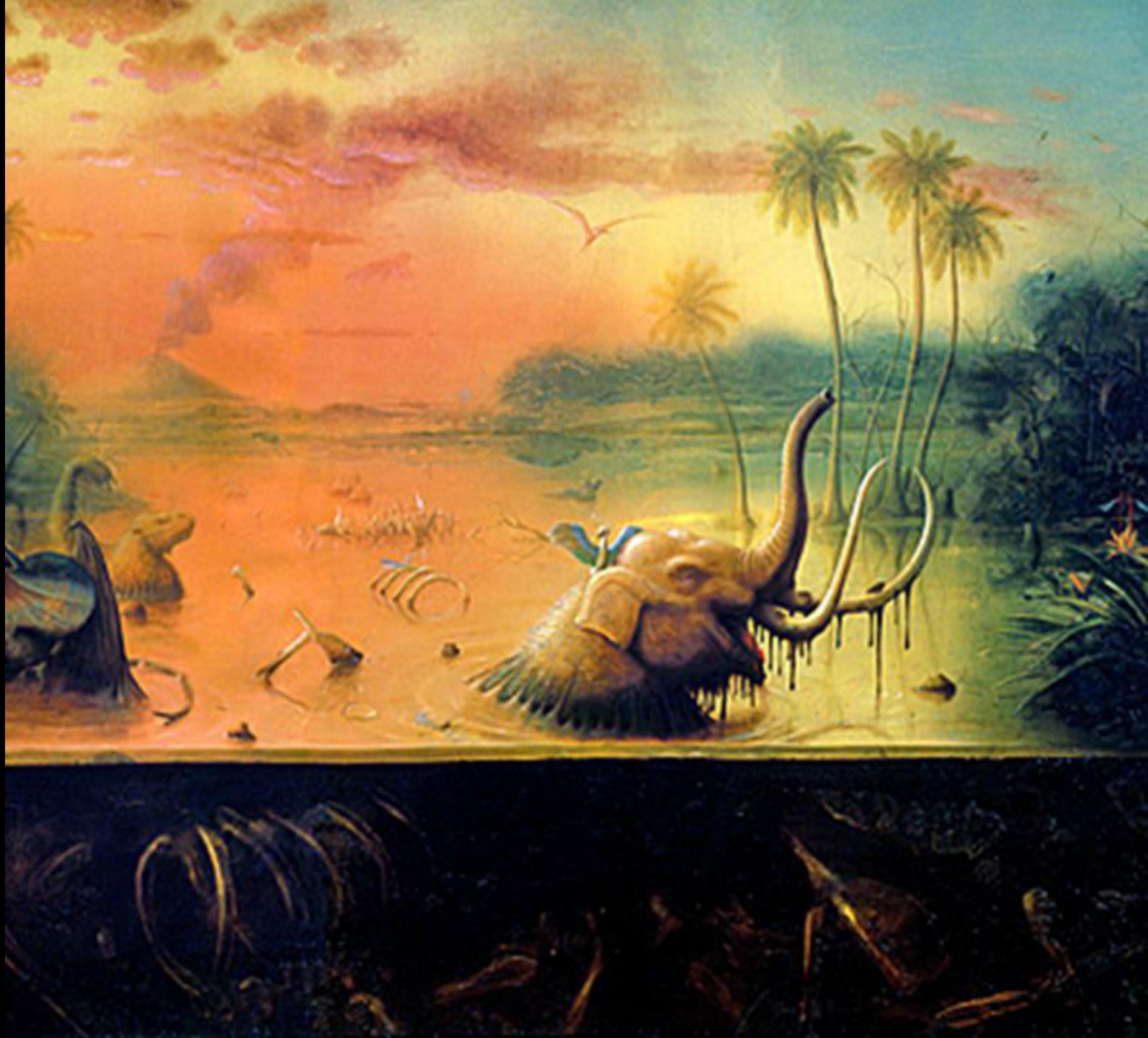
Protected Areas Day, Rio Pavilion

CBD COP 14

Sharm El Sheikh, Egypt

Outline

- GEF-7 Programming: Opportunities to support protected area management
- Country prioritization



CBD Four-year Framework of Program Priorities for the GEF's 7th replenishment period (2018-2022):

- Decision CBD/COP/DEC/XIII/21
- The Four-year Framework includes specific objectives and program priorities to be addressed during GEF-7



CBD Four-year Framework of Program Priorities for the GEF's 7th replenishment period (2018-2022):

*“Encourages the Global Environment Facility to continue and **further strengthen integrated programming** as a means to harness opportunities for synergy in implementing related multilateral environmental agreements as well as the 2030 Agenda for Sustainable Development and its Sustainable Development Goals, in particular Sustainable Development Goals 14 and 15.”*



GEF-7 Biodiversity Focal Area Goal:

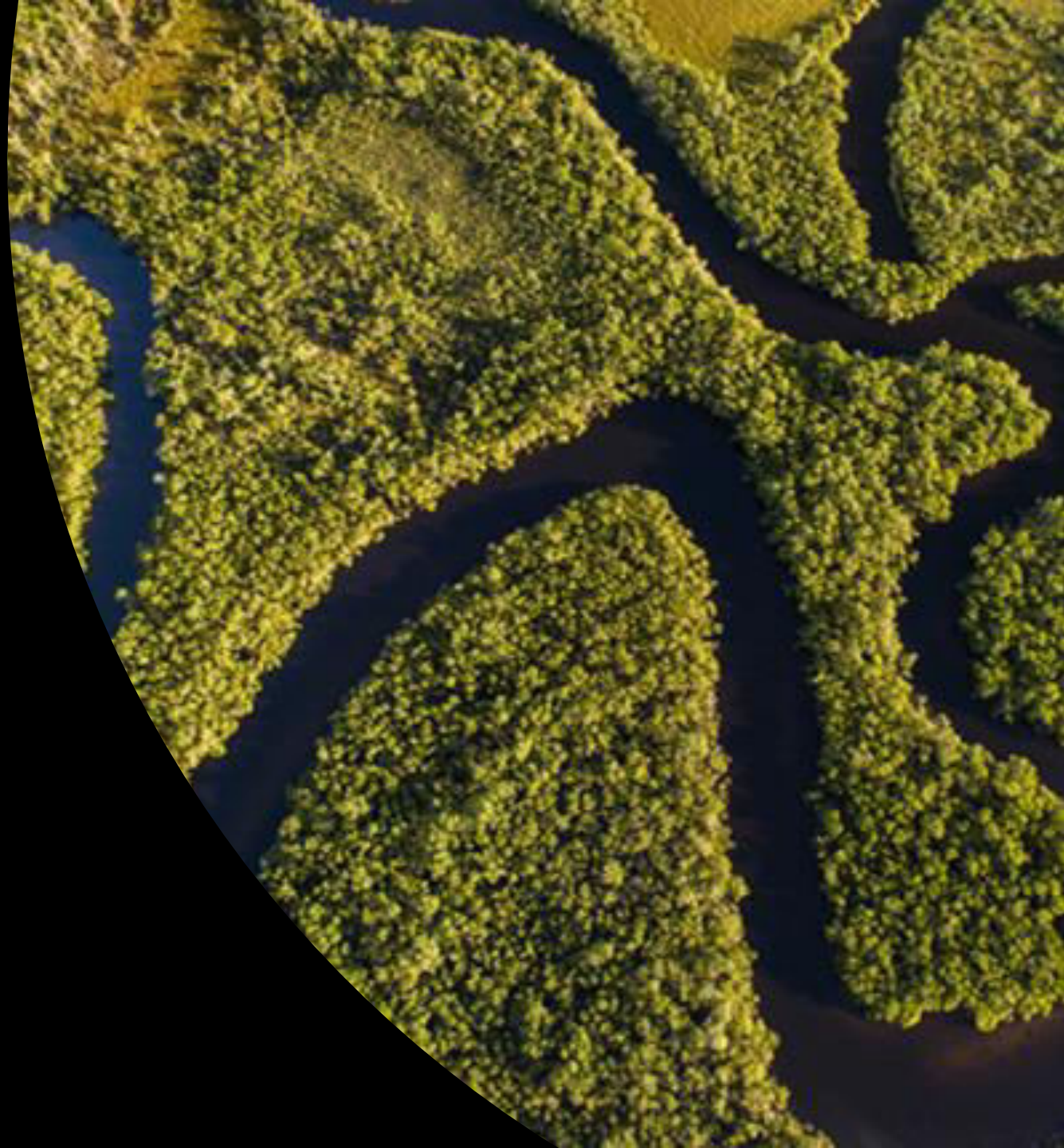
To maintain globally significant biodiversity in landscapes and seascapes

Objectives:

- 1) Mainstream biodiversity across sectors as well as landscapes and seascapes
- 2) Address direct drivers to protect habitats and species
- 3) Further develop biodiversity policy and institutional frameworks.

1) Mainstream biodiversity across sectors as well as within production landscapes and seascapes

- Biodiversity Mainstreaming in Priority Sectors
- Global Wildlife Program (IWT and Wildlife and Tourism)
- Natural Capital Assessment and Accounting
- Sustainable Use of Plant and Animal Genetic Resources
- Inclusive Conservation





2. Address direct drivers to protect habitats and species

- Prevention, Control and Management of Invasive Alien Species
- Improving Financial Sustainability, Effective Management, and Ecosystem Coverage of the Global Protected Area Estate

3. Further develop biodiversity policy and institutional framework framework

- Biosafety
- Access and Benefit Sharing of Genetic Resources
- Enabling Activities



International Waters Focal Area

- 1) Strengthening **Blue Economy** opportunities
- 2) Improve governance in the **Areas Beyond National Jurisdiction (ABNJ)**
- 3) Enhance water security in **freshwater ecosystems**



GEF-7 Impact Programs



- **Food Systems, Land Use and Restoration (FOLUR)**
- **Sustainable Forest Management**
- **Sustainable Cities**



GLOBAL ENVIRONMENT FACILITY
INVESTING IN OUR PLANET

www.theGEF.org

GEF-7 Impact Program: Food Systems, Land Use and Restoration (FOLUR IP)

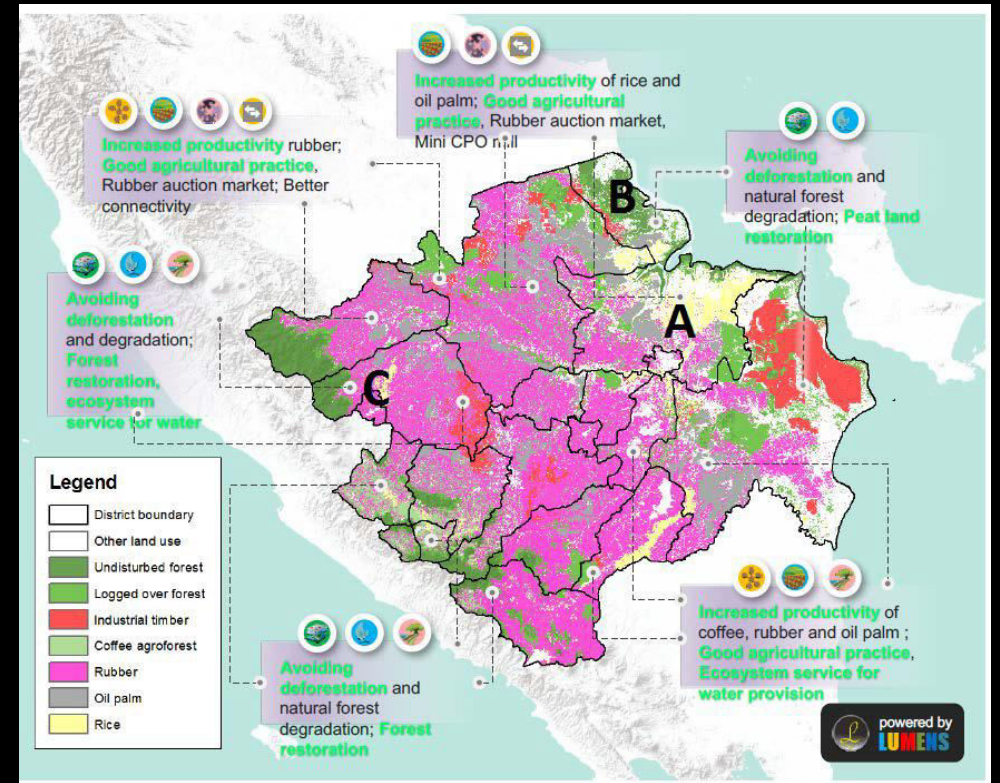


Achieving Transformational change- “Sustainability”

- **Efficient and effective food value chains for multiple benefits**
- **Removing deforestation from supply chains**
- **Expand restoration of degraded lands**

Spatially explicit geographies

- Evidence of environmental threats (*commodity driven deforestation, unsustainable agricultural systems, biodiversity loss etc.*)
- Evidence of commitment to promote sustainability in the supply or value chain
- Potential for applying a comprehensive land use approach – *linking production, conservation, and restoration at scale*



Focus on **Comprehensive Land Use Planning**

- To balance demands for increased food production with potential for harnessing ecosystem services
- Improve targeting of landscapes for delivering integrated solutions at scale

Sustainable Forest Management

Focus on globally important forests

Amazon
Forest

Congo Basin
Forest

Dryland
Forests

Require regional, ecosystem-scale approach to
maintain integrity of the entire Biome



Key Numbers Over the Past 14 years

2004 → 65:30

2018 → 30:68



A lush green forest scene featuring a waterfall cascading down a rocky ledge. In the foreground, there are various green plants, including a prominent palm tree on the right side with a large, brown, fibrous seed pod hanging from its trunk. The background is filled with dense, vibrant green foliage and trees, creating a sense of a deep, natural environment.

Thank you.

For more information:

www.thegef.org

mzimsky@thegef.org