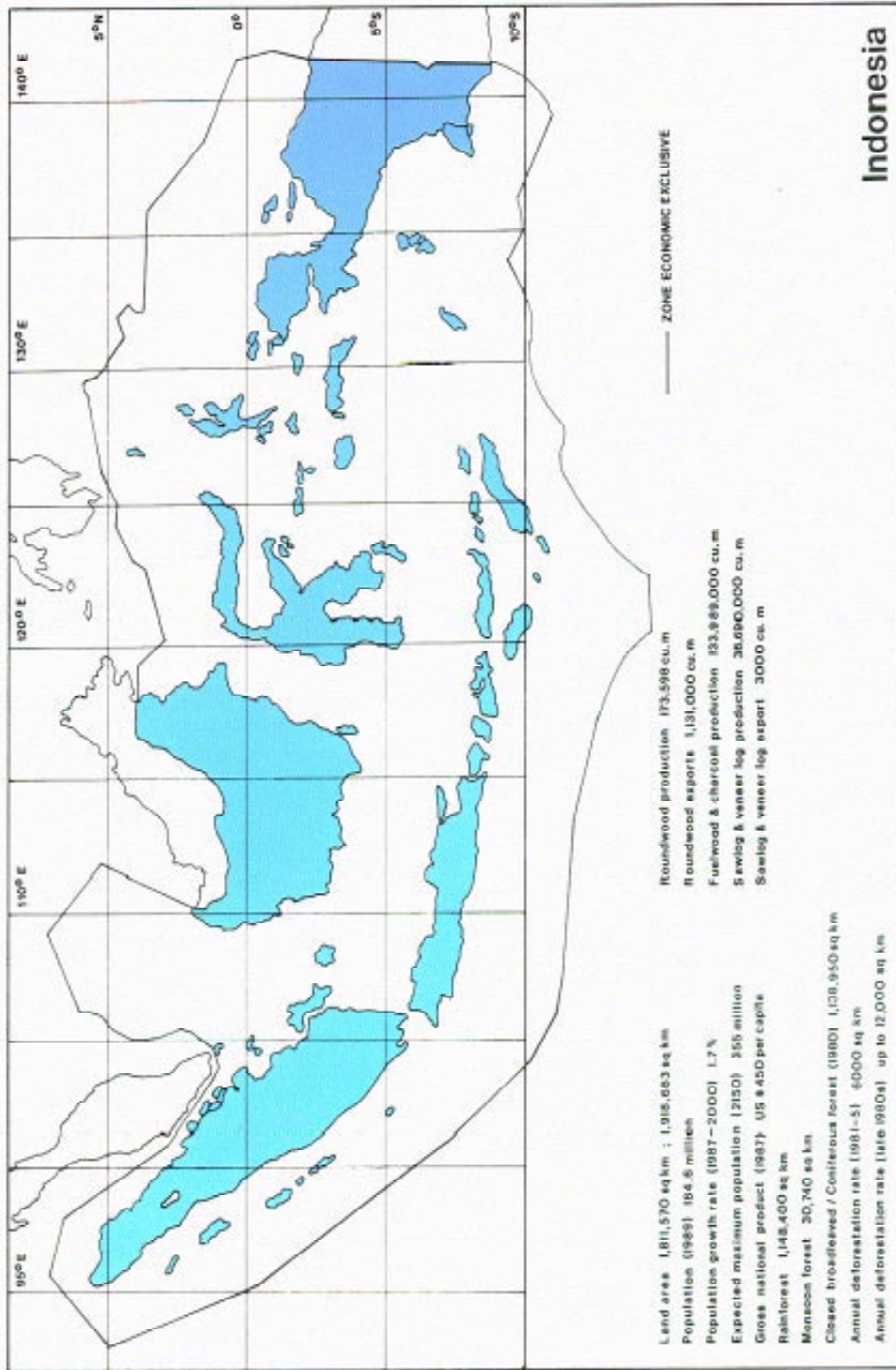
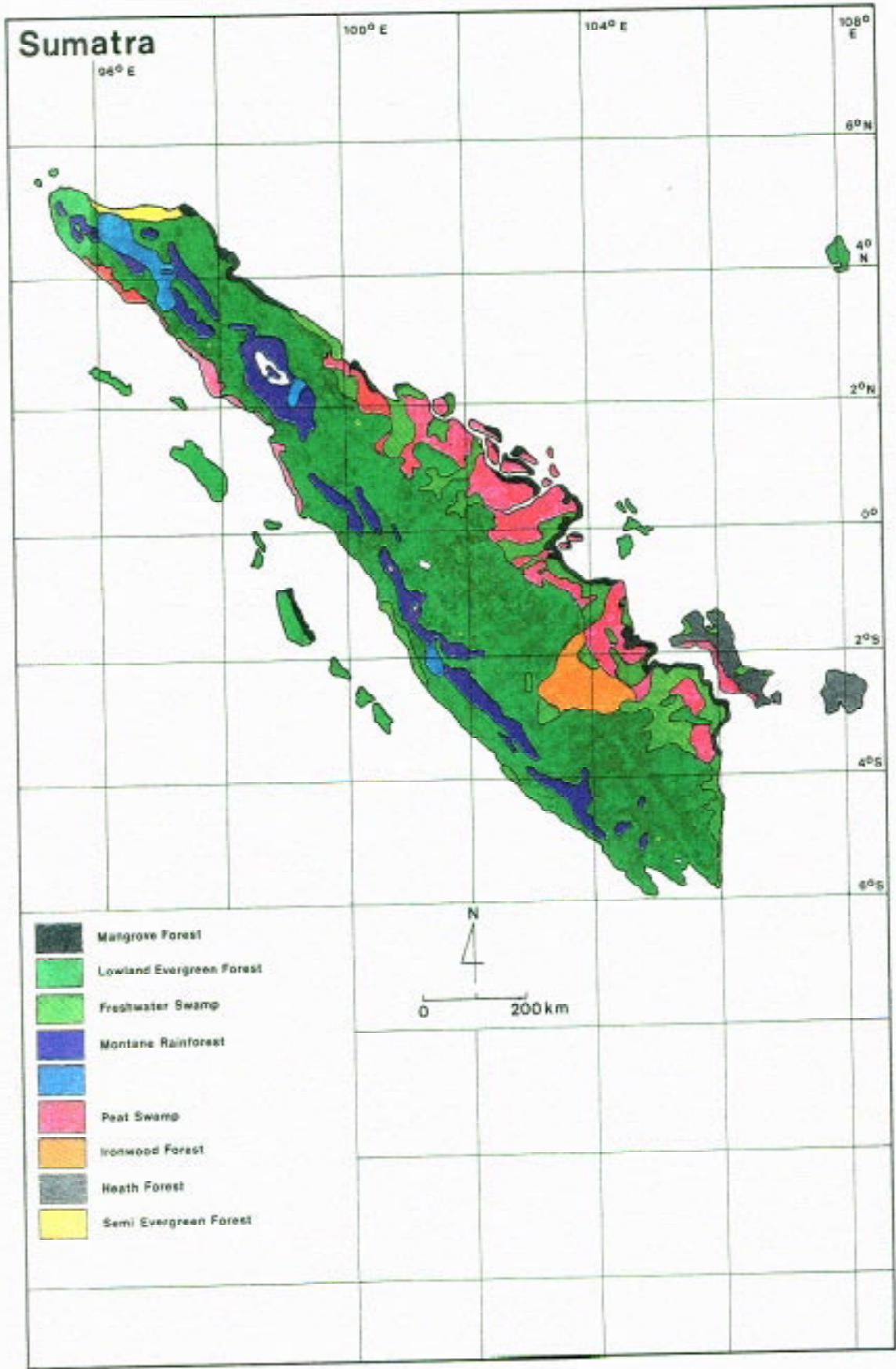
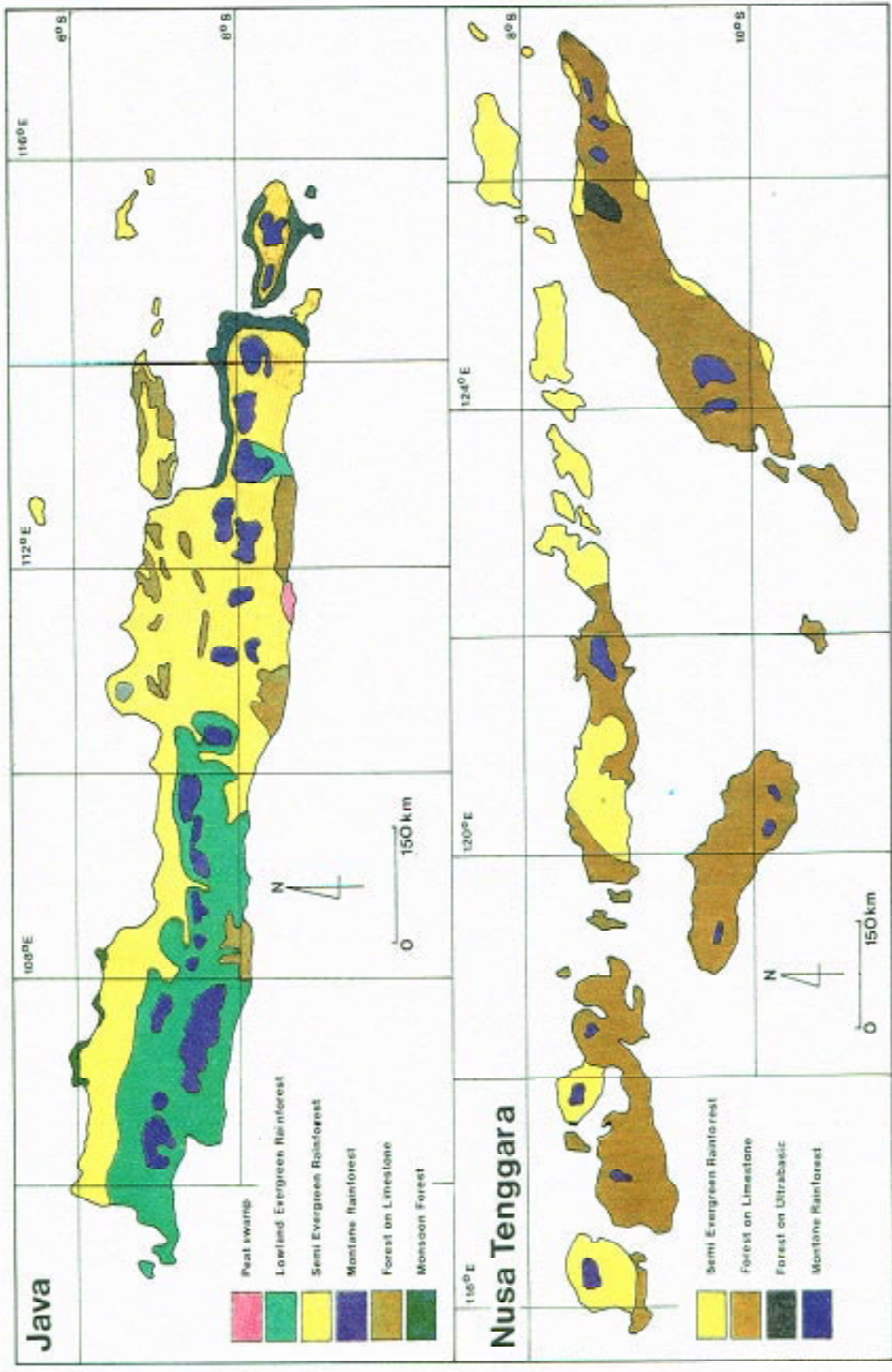


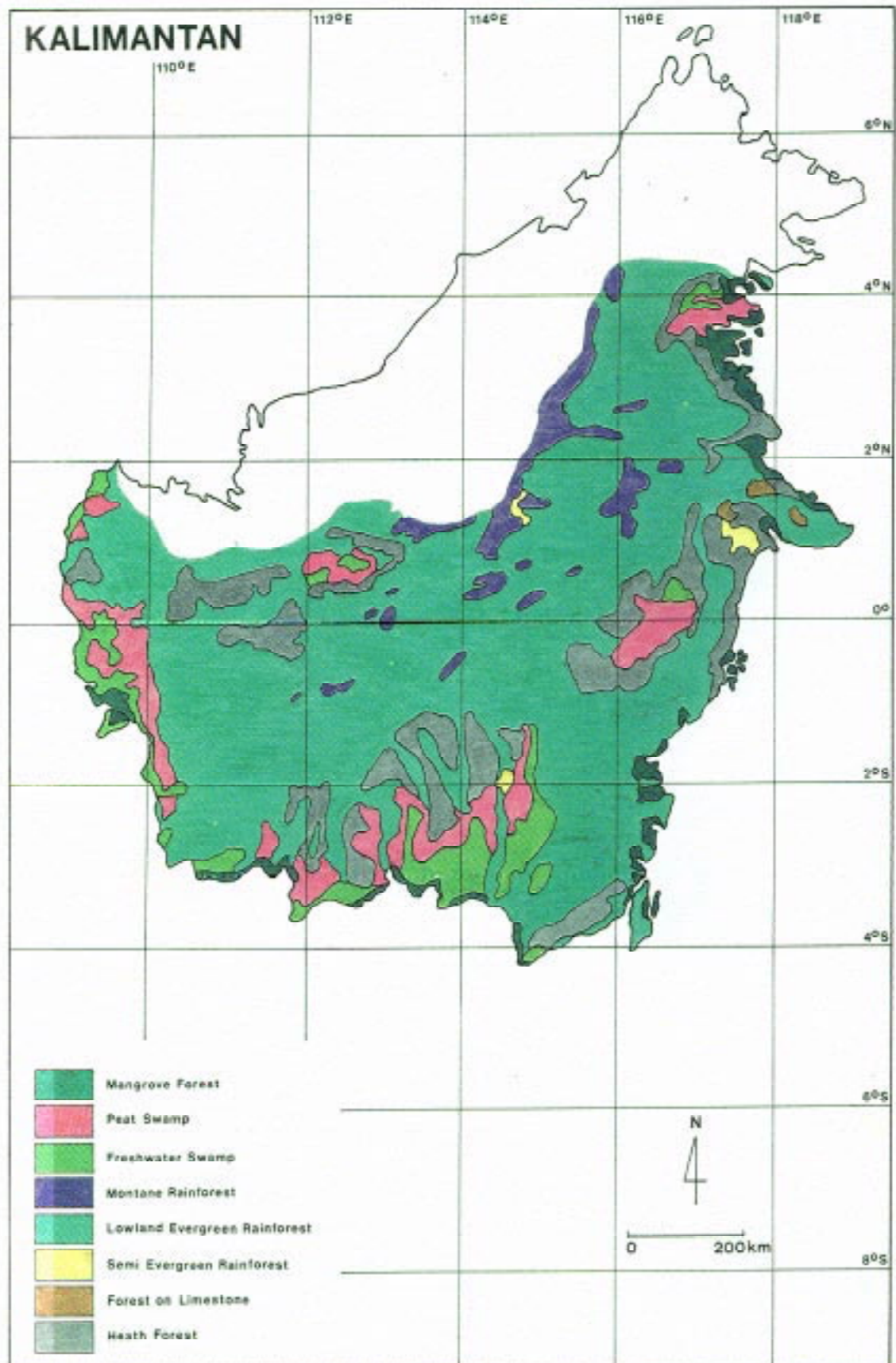
MAPS

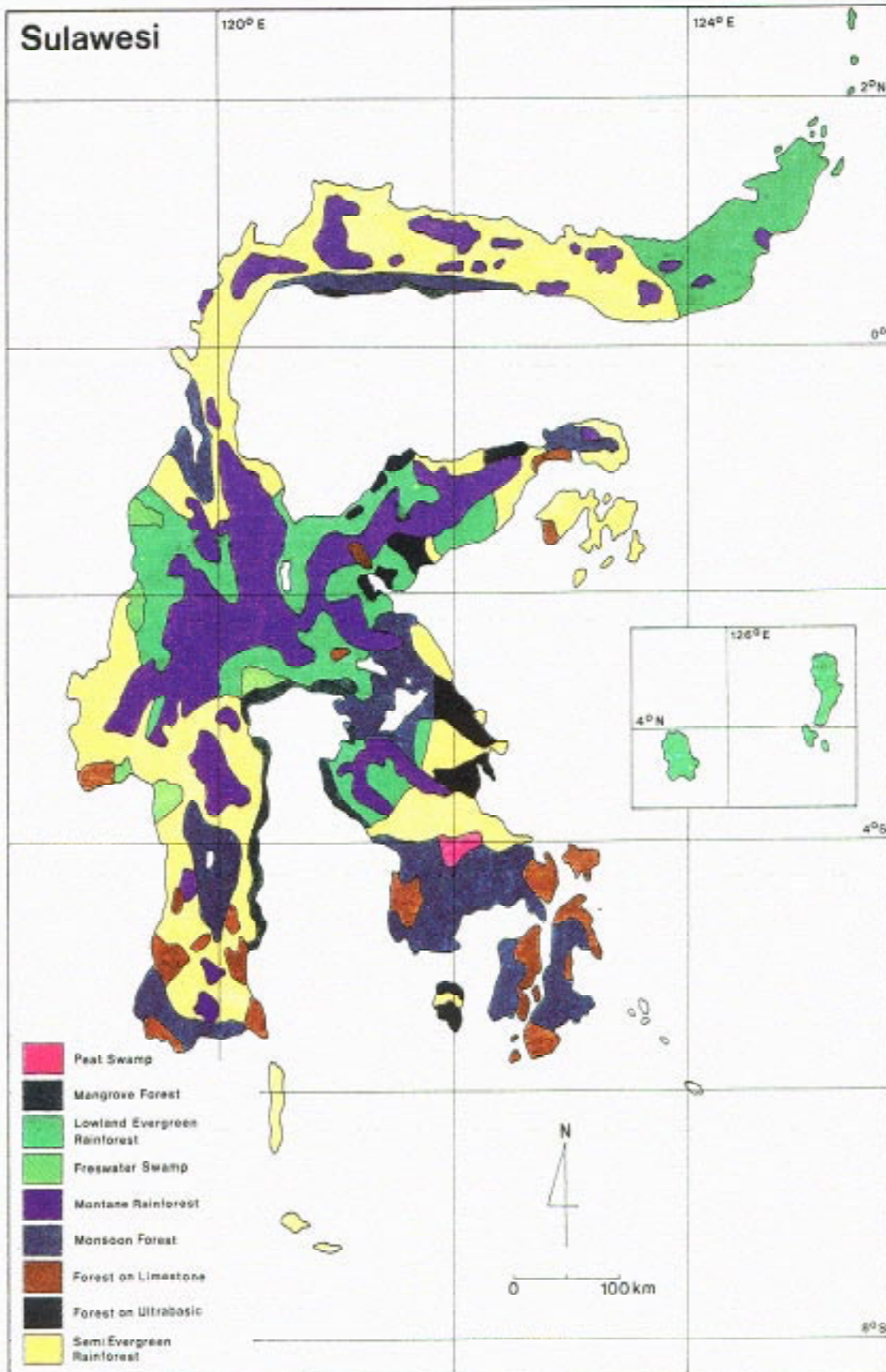
The following maps are based on those regionally prepared by PHPA and FAO for the National Conservation Plan. The maps of regional vegetation for Sumatra, Kalimantan, Java, Sulawesi, and Nusa Tenggara are derived from the IUCN Review of the Protected Areas of the Indo-Malayan Realm (MacKinnon and MacKinnon, 1986). The vegetation maps for Maluku and Irian Jaya are taken from the RePPProt maps (1990). The maps of the priority terrestrial protected areas are derived from Biodiversity in Indonesia : A Resource Inventory (MacKinnon/WWF, 1990). The maps of marine priority areas are from the Marine Data Atlas (1984).

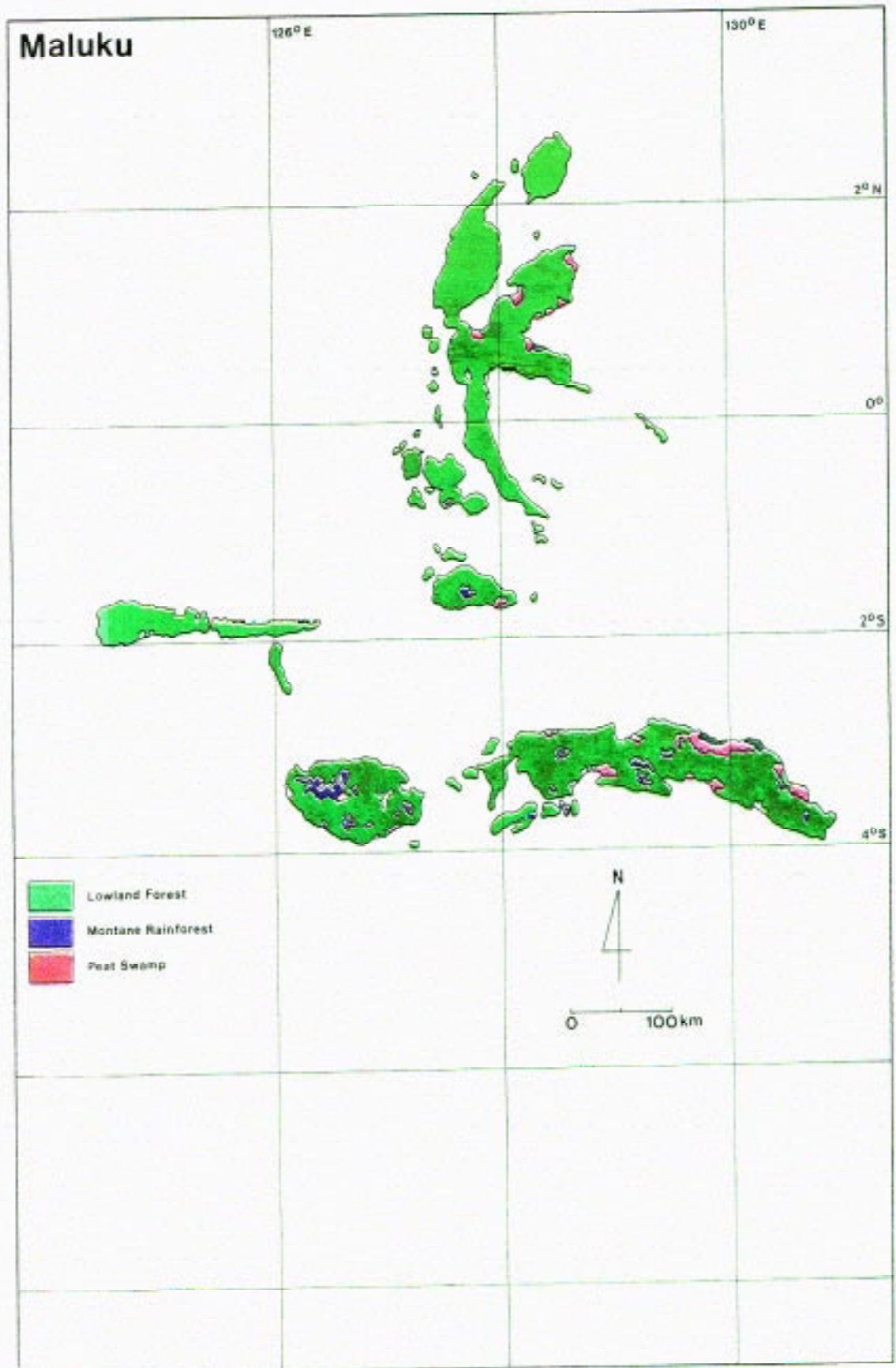












Irian Jaya

