

# Environmental expenditures in the Czech Republic

VÝDAJE NA ŽIVOTNÍ PROSTŘEDÍ  
ENVIRONMENTAL EXPENDITURES **D2**

## D2 – ENVIRONMENTAL EXPENDITURES

### Expenditures for environmental protection

The monitoring of environmental protection expenditures is performed by the Czech Statistical Office (expenditures for capital assets for environmental protection, non-capital expenditures for environmental protection and the economic benefits of environmental protection activities) and the Ministry of Finance (environmental protection expenditures from public budgets).

Statistically monitored expenditures for environmental protection include expenditures for acquiring long-term tangible assets for the protection of the environment and non-investment expenses for environmental protection. Data concerning long-term tangible assets represent the sum of expenditures that units invest to acquire long-term tangible assets (through purchase or their own activities), together with the total value of long-term tangible assets acquired through contributions, by transfer pursuant to appropriate legislative provisions, or by redeployment from personal to business use. Non-investment expenses include payroll, rent payments, utilities, and other materials and payments for services for which the main purpose is environmental protection.

Environmental protection projects include:

**Protection of the air and the climate** which encompasses, e.g., modification of technical processes to prevent the generation of pollution (for protection of the air, climate and ozone layer), removal of waste gases and ventilation air, entrapment and removal of solid and gaseous emissions, and air quality monitoring equipment.

**Management of waste waters** which encompasses, e.g., modification of technical processes to prevent the generation of pollution, construction of waste water treatment plants, construction of sewer networks with the provision for connection to waste water treatment plants, management of cooling waters, and water quality monitoring equipment.

**Waste management** which encompasses, e.g. modification of technical processes to prevent the generation of pollution, installations and equipment for collection, accumulation, transport, separation and treatment of wastes, construction of incinerators, recycling plants, establishing of landfills, composting facilities, decontamination of old landfills, and waste monitoring equipment.

**Protection and decontamination of the soil and ground and surface waters** which encompasses, e.g., the prevention of the depositing of solid substances into the soil, incl. subsequent infiltration into waters, prevention of contamination and degradation of the soil by chemical effects and subsequent decontamination, protection of the soil against erosion, slope movements and other degradation caused by physical phenomena, including costs for dealing with landslides, and costs for geological studies intended to protect the soil and ground and surface waters.

**Abatement of noise and vibrations (except for the protection of the workplace)** which encompasses, e.g., the prevention of the generation of noise and vibrations through modification of technology, and structures, implementation of installations to reduce noise and vibrations in highway, railway and air transport and industry, and measuring equipment.

**Protection of the landscape and biodiversity (species diversity)** which encompasses, e.g., the protection and renewal of habitats and species, protection of natural and semi-natural types of landscape, protection and renewal of the elements of ecological stability, recovery of the hydrological network, and expenditures to meet obligations pursuant to Sections 35 and 32 of Act No. 44/1988 Coll., on the protection and use of mineral wealth (the Mining Act).

**Protection against radiation** which encompasses, e.g., anti-radon measures, geological work connected with the aspect of locating deep storage sites for nuclear waste, measuring equipment, and transport and management of highly radioactive waste.

**Research and development** which encompasses research and development concerned with the protection of the air, climate and ozone layer, water protection, waste management, protection of the soil and ground water, reduction of noise and vibrations, protection of biodiversity and the landscape, and protection against radiation and other research on the environment.

**Other activities** in protection of the environment which include, e.g., the acquisition of long-term tangible property for prevention against floods, education in the area of protection of the environment, and training and instruction.

Until 2001, data on capital expenditures for environmental protection was based on the CSO's Iv 3-01 Report, while in 2002 the data was based on the CSO's P 5-01 and VI 1-01 Reports. In 2003, the requirement to start measuring non-capital expenditures led to the creation of an independent report entitled ŽP 1-01, which was intended for the business sector. Public sector data continued to be determined using the VI 1-01 Report and it only included data on expenditures for capital assets for environmental protection. Since 2006, the treatment of the business and the public sectors has been unified, with the same ŽP 1-01 Report being sent within both sectors.

More detailed information on environmental protection expenditures is available in the Czech Statistical Office, Environment Statistics Unit.

Environmental protection expenditures monitored by the Ministry of Finance include environmental protection expenditures by central sources (the state budget, state funds and the National Property Fund that no longer exists and whose resources are administered by the MF) and regional budgets.

The most significant central financing source, i.e. with respect to the amount of financial resources for environmental protection activities, is the state budget. Aid provided from the state budget includes subsidies, interest free loans (returnable financial aid) and guarantees for commercial loans. Since 1997, the structure of environmental protection expenditures has corresponded to the budget structure issued by the MF. The same environmental expenditure monitoring methodology, which corresponds to the statistical reporting used by EU countries, is also used by the CSO.

Another public central source of environmental expenditures is environmental protection expenditures by state funds. Since 1997, all environmental protection expenditures from state funds have been monitored pursuant to the applicable budget structure. The most important element for the monitoring of expenditures is the State Environmental Fund that was established in 1991. The sources of this state fund's revenues include revenues from

charges for polluting the environment and for using natural resources, as well as some of the revenues from fines.

The third central source is the no-longer existent National Property Fund of the Czech Republic (NPF CR) that had been established pursuant to the Privatisation Act. Even though it was not a state fund, it is included in public budgets. It was abolished by Act No. 178/2005 Coll. as of 1 January 2006. Both its competencies and the resources used to rehabilitate of old ecological burdens are now administered by the Ministry of Finance.

In addition to central sources, regional budgets represent another significant source of public environmental protection expenditures. Regional budgets include the budgets of regions of municipalities.

More detailed information on environmental protection expenditures is available in the Czech Statistical Office, Environment Statistics Unit.

## D2.1 Veřejné výdaje na ochranu životního prostředí *Public environmental protection expenditures*

Tab. D2.1.1 Výdaje na ochranu životního prostředí a pitnou vodu z centrálních zdrojů, 2003–2007  
*Expenditures for protection of the environment and drinking water from central sources, 2003–2007*

| Zdroj výdajů      | 2003               | 2004     | 2005     | 2006                    | 2007     | Source of expenditures |
|-------------------|--------------------|----------|----------|-------------------------|----------|------------------------|
|                   | mil. Kč běžné ceny |          |          | mil. CZK current prices |          |                        |
| Státní rozpočet   | 5 988,2            | 6 613,8  | 7 547,5  | 16 252,8                | 18 169,1 | State budget           |
| Státní fondy      | 4 722,6            | 4 203,2  | 3 448,2  | 2 406,0                 | 1 700,0  | State funds            |
| FNM <sup>1)</sup> | 2 587,3            | 3 563,3  | 6 022,0  | 4 608,0                 | 4 712,0  | NPF <sup>1)</sup>      |
| Celkem            | 13 298,1           | 14 380,3 | 17 017,7 | 23 266,8                | 24 581,1 | Total                  |

<sup>1)</sup> K 1. 1. 2006 byl FNM ČR zrušen zákonem č. 178/2005 Sb. Jeho kompetence a prostředky vynakládané k odstranění starých ekologických škod nyní spravuje Ministerstvo financí mimo státní rozpočet.  
*The National Property Fund of the Czech Republic was abolished by Act No. 178/2005 Coll. as of 1 January 2006. Both its competencies and the resources used to rehabilitate old ecological burdens are now administered by the Ministry of Finance beside state budget.*

Zdroj: MF, MŽP, FNM  
*Source: MF CZ, ME CZ, The National Property Fund*

Tab. D2.1.2 Struktura výdajů státního rozpočtu na ochranu životního prostředí, 2003–2007  
*State budget expenditures for environmental protection, 2003–2007*

| Popis činností   | 2003  | 2004                | 2005                | 2006                | 2007                | Item  |
|--|---|---------------------|---------------------|---------------------|---------------------|---|
|  | tis. Kč běžné ceny <i>thous. CZK current prices</i> |                     |                     |                     |                     |   |
| Odvádění a čištění odpadních vod, kaly                       | 821 509,83  | 640 841,06          | 883 793,40          | 3 795 763,35        | 4 822 797,60        | Sewers and treatment of waste water, sludge                           |
| Prevence znečištění vody                                     | 0,00  | 0,00                | 0,00                | 0,00                | 82 736,09           | Prevention of water pollution   |
| Úprava drobných vodních toků                                 | 363 166,01  | 464 293,31          | 309 995,12          | 180 550,79          | 1 232 346,98        | Modification of small water courses                                   |
| <b>Ochrana vody celkem</b>                                   | <b>1 184 675,84</b>                                 | <b>1 105 134,37</b> | <b>1 193 788,52</b> | <b>3 976 314,14</b> | <b>6 137 880,67</b> | <b>Total water protection</b>   |
| Programy zateplování a úspor energie                         | 129 328,52  | 118 783,20          | 174 115,42          | 225 101,08          | 200 079,03          | Programs of insulation and energy savings                             |
| Odstraňování tuhých emisí                                    | 0,00  | 0,00                | 0,00                | 0,00                | 732,91              | Removal of solid emissions  |
| Odstraňování plyných emisí                                   | 0,00  | 0,00                | 0,00                | 3 591,80            | 0,00                | Removal of gas emissions  |
| Změny technologií vytápění                                   | 1 466,48  | 65 575,04           | 69 890,95           | 267 528,63          | 279 323,65          | Changes in heating technology   |
| Monitoring ochrany ovzduší                                   | 0,00  | 0,00                | 0,00                | 2 012,98            | 0,00                | Monitoring of air protection  |
| Ostatní činnosti k ochraně ovzduší JN                        | 7 308,67  | 0,00                | 8 744,06            | 17 153,81           | 12 207,62           | Other activities in air protection n.e.c.                             |
| <b>Ochrana ovzduší celkem</b>                                | <b>138 103,67</b>                                   | <b>189 705,74</b>   | <b>252 750,43</b>   | <b>515 388,30</b>   | <b>492 343,21</b>   | <b>Total air protection</b>   |
| Sběr a svoz nebezpečných odpadů                              | 142 168,44  | 567 364,57          | 1 118 916,66        | 1 343 799,07        | 685 906,20          | Collection of hazardous waste   |
| Sběr a svoz komunálních odpadů                               | 42 425,54   | 40 995,11           | 38 704,71           | 38 098,42           | 39 115,60           | Collection of municipal waste   |
| Sběr a svoz ostatních odpadů                                 | 12 548,13   | 14 062,64           | 16 632,33           | 19 429,33           | 28 517,30           | Collection of other waste   |
| Využívání a zneškodňování nebezpečných odpadů                | 0,00  | 0,00                | 0,00                | 0,00                | 12 989,68           | Utilization and disposal of hazardous waste                           |
| Využívání a zneškodňování komunálního odpadu                 | 211,42  | 224,63              | 20,72               | 198,36              | 0,99                | Utilization and disposal of municipal waste                           |
| Ostatní nakládání s odpady JN                                | 46 566,62   | 0,00                | 85 991,10           | 177 907,53          | 398 147,44          | Other waste management n.e.c.   |
| <b>Nakládání s odpady celkem</b>                             | <b>243 920,15</b>                                   | <b>672 277,55</b>   | <b>1 260 265,52</b> | <b>1 579 432,71</b> | <b>1 164 677,21</b> | <b>Total waste management</b>   |
| Ochrana půdy a podzemní vody proti znečišťujícím infiltracím | 21 472,75   | 31 305,94           | 22 521,83           | 36 040,58           | 22 869,75           | Protection of soil and ground water against pollution by infiltration |
| Dekontaminace půd a čištění podzemní vody                    | 237 920,70  | 214 404,07          | 170 807,64          | 173 562,15          | 161 771,48          | Soil decontamination and the treatment of ground water                |



Tab. D2.1.2, pokračování/continued

| Popis činnosti   | 2003                | 2004                | 2005                | 2006                      | 2007                | Item  |
|--|---------------------|---------------------|---------------------|---------------------------|---------------------|---|
|  | tis. Kč běžné ceny  |                     |                     | thous. CZK current prices |                     |   |
| Ostatní ochrana půdy a podzemní vody JN                    | 38 101,42           | 81 028,70           | 122 442,89          | 55 678,66                 | 57 768,38           | Other protection of soil and ground water n.e.c.                      |
| <b>Ochrana půdy a podzemní vody celkem</b>                 | <b>297 494,87</b>   | <b>326 738,71</b>   | <b>315 772,36</b>   | <b>265 281,39</b>         | <b>242 409,61</b>   | <b>Total protection of soil and ground water</b>                      |
| Celospolečenské funkce lesů                                | 194 201,91          | 198 077,20          | 110 449,60          | 206 225,75                | 207 037,85          | General social function of forests                                    |
| Revitalizace říčních systémů                               | 466 039,17          | 495 197,41          | 472 858,86          | 503 296,21                | 426 640,84          | Revitalization of river systems                                       |
| Ochrana druhů a stanovišť                                  | 46 879,00           | 44 535,00           | 44 535,00           | 42 206,00                 | 49 202,12           | Protection of species and habitats                                    |
| Chráněné části přírody                                     | 884 056,26          | 776 171,77          | 836 467,91          | 841 164,39                | 951 985,67          | Protected areas of nature   |
| Rekultivace půdy v důsledku těžební a důlní činnosti apod. | 61 713,00           | 70 000,00           | 76 402,00           | 76 305,00                 | 82 716,00           | Soil reclamation following mining activities                          |
| Protierozní, protilavinová a protipožární ochrana          | 724 525,57          | 796 595,01          | 907 670,25          | 752 704,64                | 642 932,63          | Erosion, avalanche and fire prevention measures                       |
| Péče o vzhled obcí a veřejnou zeleň                        | 3 005,92            | 2 936,52            | 18 076,00           | 3 406,00                  | 39 383,80           | Care for the appearance of municipalities and public greenery         |
| Ostatní činnosti k ochraně přírody a krajiny JN            | 254 672,87          | 258 438,91          | 229 325,95          | 224 875,63                | 244 954,14          | Other activities in the protection of nature and the landscape n.e.c. |
| <b>Ochrana biodiverzity a krajiny celkem</b>               | <b>2 635 093,70</b> | <b>2 641 951,82</b> | <b>2 695 785,57</b> | <b>2 650 183,62</b>       | <b>2 644 853,05</b> | <b>Total protection of biodiversity and the landscape</b>             |
| Ústřední státní správa v ochraně životního prostředí       | 545 602,33          | 526 211,49          | 550 332,14          | 599 307,68                | 608 071,06          | Central state administration in environmental protection              |
| Ostatní orgány státní správy v ochraně životního prostředí | 361 512,64          | 360 807,19          | 376 545,91          | 377 322,82                | 420 231,00          | Other bodies of state administration in environmental protection      |
| <b>Správa v ochraně životního prostředí celkem</b>         | <b>907 114,97</b>   | <b>887 018,68</b>   | <b>926 878,05</b>   | <b>976 630,50</b>         | <b>1 028 302,06</b> | <b>Total administration in environmental protection</b>               |
| <b>Výzkum životního prostředí celkem</b>                   | <b>296 717,82</b>   | <b>332 294,82</b>   | <b>338 388,35</b>   | <b>198 230,64</b>         | <b>345 068,58</b>   | <b>Total environmental research</b>                                   |
| Mezinárodní spolupráce v životním prostředí                | 43 246,37           | 72 975,68           | 55 703,04           | 48 795,14                 | 53 520,79           | International cooperation on the environment                          |
| Ekologická výchova a osvěta                                | 20 242,35           | 18 919,98           | 75 909,91           | 179 489,34                | 173 320,21          | Environmental enlightenment and public awareness                      |

Tab. D2.1.2, pokračování/continued

| Popis činností                            | 2003  | 2004                | 2005                | 2006                              | 2007                              | Item  |
|---|---|---------------------|---------------------|-----------------------------------|-----------------------------------|---|
|   | tis. Kč běžné ceny<br>thous. CZK current prices |                     |                     |                                   |                                   |   |
| Ekologické programy v dopravě             | 88 500,00                                       | 60 000,00           | 34 500,00           | 181 614,20                        | 58 141,04                         | Environmental programs in transportation                    |
| Ekologické záležitosti a programy JN      | 133 112,73                                      | 306 736,22          | 397 732,07          | 5 681 486,78 <sup>1)</sup>        | 5 828 564,51                      | Environmental aspects and programs n.e.c.                   |
| <b>Ostatní činnosti v ekologii celkem</b> | <b>285 101,45</b>                               | <b>458 631,88</b>   | <b>563 845,02</b>   | <b>6 091 385,46</b>               | <b>6 113 546,55</b>               | <b>Total other environmental activities</b>                 |
| <b>Výdaje na ochranu ŽP celkem</b>        | <b>5 988 222,47</b>                             | <b>6 613 753,57</b> | <b>7 547 473,82</b> | <b>16 252 846,76<sup>1)</sup></b> | <b>18 169 080,94<sup>1)</sup></b> | <b>Total expenditures for protection of the environment</b> |

<sup>1)</sup> Nárůst finančních prostředků v r. 2006 a 2007 proti r. 2005 je v důsledku zapojení finančních prostředků z evropských fondů.  
The increase in financial resources in 2006 and 2007 compared to 2005 resulted from the inclusion of European fund resources.

Zdroj: MF  
Source: MF CZ

Tab. D2.1.3 Struktura výdajů územních rozpočtů na ochranu životního prostředí, 2003–2007  
The structure of expenditures from territorial budgets for environmental protection, 2003–2007

| Popis činností                                  | 2003  | 2004             | 2005              | 2006              | 2007              | Item   |
|---|---|------------------|-------------------|-------------------|-------------------|--|
|   | tis. Kč běžné ceny<br>thous. CZK current prices |                  |                   |                   |                   |  |
| Odvod a čištění odpadních vod                   | 9 062 700                                       | 9 541 981        | 10 267 747        | 11 384 009        | 10 401 375        | Sewers and treatment of waste water          |
| Prevence znečištění vody                        | 53 227  | 5 834            | 7 652             | 9 121             | 5 440             | Prevention of water pollution                |
| Odvod a čištění odpadních vod JN                | 81 007  | 68 338           | 113 322           | 131 013           | 173 686           | Sewers and treatment of waste water n.e.c.   |
| Úpravy drobných vodních toků                    | 320 915   | 301 935          | 313 966           | 342 547           | 352 747           | Modification of minor water courses          |
| <b>Ochrana vody celkem</b>                      | <b>9 517 849</b>                                | <b>9 918 088</b> | <b>10 702 687</b> | <b>11 866 690</b> | <b>10 933 248</b> | <b>Water protection, total</b>               |
| Programy zateplování a úspor energie            | 14 629  | 9 154            | 11 035            | 78 615            | 40 182            | Promotion of insulation and energy savings   |
| Odstraňování tuhých emisí                       | 0   | 0                | 0                 | 0                 | 3                 | Eliminating PM emissions                     |
| Odstraňování plyných emisí                      | 0   | 0                | 0                 | 0                 | 24                | Eliminating gaseous emissions                |
| Změny technologií vytápění                      | 207 760   | 219 286          | 177 396           | 271 605           | 89 872            | Changes in heating technology                |
| Opatření ke snížení produkce skleníkových plynů | 0   | 0                | 0                 | 0                 | 1 443             | Measures to reduce greenhouse gas production |

Tab. D2.1.3, pokračování/continue d

| Popis činností   | 2003               | 2004             | 2005             | 2006                      | 2007             | Item  |
|--|--------------------|------------------|------------------|---------------------------|------------------|---|
|  | tis. Kč běžné ceny |                  |                  | thous. CZK current prices |                  |   |
| Změny výrob. technologií za účelem odstranění emisí          | 0                  | 0                | 0                | 0                         | 1 427            | Production technology changes to eliminate emissions                          |
| Monitoring ochrany ovzduší                                   | 16 043             | 22 053           | 24 145           | 23 754                    | 20 733           | Monitoring of air protection  |
| Ostatní činnosti k ochraně ovzduší JN                        | 48 045             | 74 923           | 20 906           | 26 868                    | 13 306           | Other activities in air protection n.e.c.                                     |
| <b>Ochrana ovzduší celkem</b>                                | <b>286 477</b>     | <b>325 416</b>   | <b>233 482</b>   | <b>400 842</b>            | <b>166 990</b>   | <b>Air protection, total</b>  |
| Sběr a zpracování druhotných surovin                         | 12 338             | 14 818           | 22 683           | 17 610                    | 13 186           | Collection and processing of secondary raw materials                          |
| Sběr a svoz nebezpečných odpadů                              | 97 844             | 115 424          | 130 067          | 118 250                   | 126 064          | Collection of hazardous waste   |
| Sběr a svoz komunálních odpadů                               | 4 099 125          | 4 610 096        | 5 123 438        | 5 371 619                 | 5 692 343        | Collection of municipal waste   |
| Sběr a svoz ostatních odpadů                                 | 159 048            | 207 983          | 232 436          | 288 394                   | 344 088          | Collection of other waste   |
| Využití a zneškodnění nebezpečných odpadů                    | 21 336             | 40 809           | 26 750           | 50 822                    | 35 332           | Utilization and disposal of hazardous waste                                   |
| Využití a zneškodnění komunálních odpadů                     | 637 462            | 746 514          | 866 394          | 1 071 245                 | 1 093 613        | Utilization and disposal of municipal waste                                   |
| Využití a zneškodnění ostatních odpadů                       | 38 285             | 38 588           | 37 144           | 26 816                    | 81 002           | Utilization and disposal of other waste                                       |
| Prevence vzniku odpadů                                       | 167 215            | 210 783          | 235 784          | 263 278                   | 305 197          | Prevention of waste formation   |
| Monitoring nakládání s odpady                                | 4 158              | 7 111            | 11 427           | 20 090                    | 9 156            | Monitoring of waste management  |
| Ostatní nakládání s odpady JN                                | 555 392            | 547 075          | 419 507          | 477 540                   | 337 395          | Other waste management n.e.c.   |
| <b>Nakládání s odpady celkem</b>                             | <b>5 792 203</b>   | <b>6 539 201</b> | <b>7 105 630</b> | <b>7 705 664</b>          | <b>8 037 373</b> | <b>Depositing of waste, total</b>   |
| Protierozní ochrana  | 23 753             | 15 491           | 6 042            | 8 169                     | 19 268           | Measures against erosion  |
| Ochrana půdy a podzemní vody proti znečišťujícím infiltracím | 361                | 13               | 115              | 16                        | 57               | Protection of the soil and groundwater against pollution through infiltration |
| Dekontaminace půd a čištění podzemní vody                    | 51 523             | 90 192           | 70 240           | 58 706                    | 88 340           | Decontamination of the soil and purification of ground water                  |
| Monitoring půdy a podzemních vod                             | 4 813              | 4 612            | 6 436            | 6 091                     | 4 579            | Monitoring of the soil and ground water                                       |
| Ostatní ochrana půdy a vody JN                               | 12 376             | 16 783           | 22 999           | 12 669                    | 7 736            | Other protection of the soil and water n.e.c.                                 |
| <b>Ochrana půdy a podzemní vody celkem</b>                   | <b>92 826</b>      | <b>127 091</b>   | <b>105 832</b>   | <b>85 651</b>             | <b>119 981</b>   | <b>Protection of the soil and groundwater, total</b>                          |

Tab. D2.1.3, pokračování / *continued*

| Popis činností   | 2003               | 2004             | 2005             | 2006                      | 2007             | Item  |
|--|--------------------|------------------|------------------|---------------------------|------------------|---|
|  | tis. Kč běžné ceny |                  |                  | thous. CZK current prices |                  |   |
| Celospolečenské funkce lesů                                | 145 536            | 107 203          | 120 820          | 126 559                   | 182 310          | Social function of forests  |
| Revitalizace říčních systémů                               | 52 826             | 76 979           | 96 358           | 97 006                    | 68 521           | Revitalization of river systems                                       |
| Ochrana druhů a stanovišť                                  | 968 724            | 826 263          | 809 889          | 886 211                   | 898 844          | Protection of species and habitats                                    |
| Chráněné části přírody                                     | 42 519             | 49 993           | 75 536           | 90 893                    | 86 286           | Protected parts of nature   |
| Rekultivace půdy v důsledku těžeb a důlních činností apod. | 187 335            | 157 023          | 59 055           | 68 810                    | 48 008           | Reclamation of soil following mining, etc.                            |
| Protierozní, protilavinová, protipožární ochrana           | 175 383            | 680 577          | 961 896          | 597 409                   | 218 762          | Erosion, avalanche and fire prevention measures                       |
| Péče o vzhled obcí a veřejnou zeleň                        | 3 662 973          | 4 173 061        | 4 414 454        | 5 160 055                 | 5 282 081        | Care for the appearance of municipalities and public greenery         |
| Ostatní činnosti k ochraně přírody a krajiny JN            | 143 201            | 87 829           | 88 557           | 148 734                   | 88 183           | Other activities in the protection of nature and the landscape n.e.c. |
| <b>Ochrana biodiverzity a krajiny celkem</b>               | <b>5 378 497</b>   | <b>6 158 928</b> | <b>6 626 565</b> | <b>7 175 677</b>          | <b>6 872 996</b> | <b>Protection of biodiversity and the landscape, total</b>            |
| Konstrukce a uplatnění protihlukových zařízení             | 134                | 490              | 10 372           | 1 529                     | 5 212            | The construction and implementation of noise prevention measures      |
| Protiradonová opatření                                     | 0                  | 0                | 0                | 0                         | 2 991            | Anti-radon measures   |
| Monitoring úrovně fyzikálních faktorů                      | 836                | 738              | 521              | 620                       | 1 066            | Measuring the level of physical factors                               |
| Ostatní činnosti k redukcí fyzikálních vlivů               | 0                  | 0                | 0                | 0                         | 3 859            | Other activities aimed at reducing physical effects                   |
| <b>Redukce působení fyzikálních faktorů</b>                | <b>970</b>         | <b>1 228</b>     | <b>10 893</b>    | <b>2 149</b>              | <b>13 128</b>    | <b>Reduction of the action of physical factors</b>                    |
| Ostatní orgány státní správy v ochraně ŽP                  | 0                  | 0                | 0                | 0                         | 162              | Other public administration environmental protection bodies           |
| Ostatní správa v ekologii                                  | 0                  | 0                | 10 460           | 9 361                     | 34 263           | Other environmental management  |
| <b>Správa v ochraně životního prostředí</b>                | <b>0</b>           | <b>0</b>         | <b>10 460</b>    | <b>9 361</b>              | <b>34 425</b>    | <b>Environmental protection management</b>                            |
| Mezinárodní spolupráce v životním prostředí                | 0                  | 0                | 0                | 0                         | 394              | International environmental cooperation                               |
| Ekologická výchova a osvěta                                | 34 987             | 62 597           | 89 086           | 135 560                   | 120 178          | Environmental enlightenment and public awareness                      |



Tab. D2.1.3, pokračování/continued

| Popis činností                       | 2003   | 2004              | 2005              | 2006              | 2007              | Item   |
|--------------------------------------|--|-------------------|-------------------|-------------------|-------------------|--|
|                                      | tis. Kč běžné ceny<br><i>thous. CZK current prices</i> |                   |                   |                   |                   |  |
| Ekologické programy v dopravě        | 0  | 0                 | 0                 | 0                 | 5 042             | Environmental programmes in transportation     |
| Ekologické záležitosti a programy JN | 20 530   | 21 277            | 20 139            | 26 595            | 27 850            | Environmental activities and programmes n.e.c. |
| <b>Ostatní činnosti v ekologii</b>   | <b>55 517</b>  | <b>83 874</b>     | <b>109 225</b>    | <b>162 155</b>    | <b>153 464</b>    | <b>Other work in the environment</b>           |
| <b>Nejmenované par. odd. 37</b>      | <b>37 004</b>  | <b>52 887</b>     | <b>31 113</b>     | <b>41 177</b>     | <b>.</b>          | <b>Not included in par. 37</b>                 |
| <b>Celkem</b>                        | <b>21 161 343</b>                                      | <b>23 206 713</b> | <b>24 935 887</b> | <b>27 449 366</b> | <b>26 331 605</b> | <b>Total</b>                                   |

Pozn.: Jednotlivé složky územních rozpočtů obsahují duplicity s výdaji ze státního rozpočtu a státních účelových fondů.  
 Note: Items from territorial budgets contain duplications with expenditures from state budget and state funds.

Zdroj: MF  
 Source: MF CZ

## DEVELOPMENT CO-OPERATION OF THE CZECH REPUBLIC IN 2006

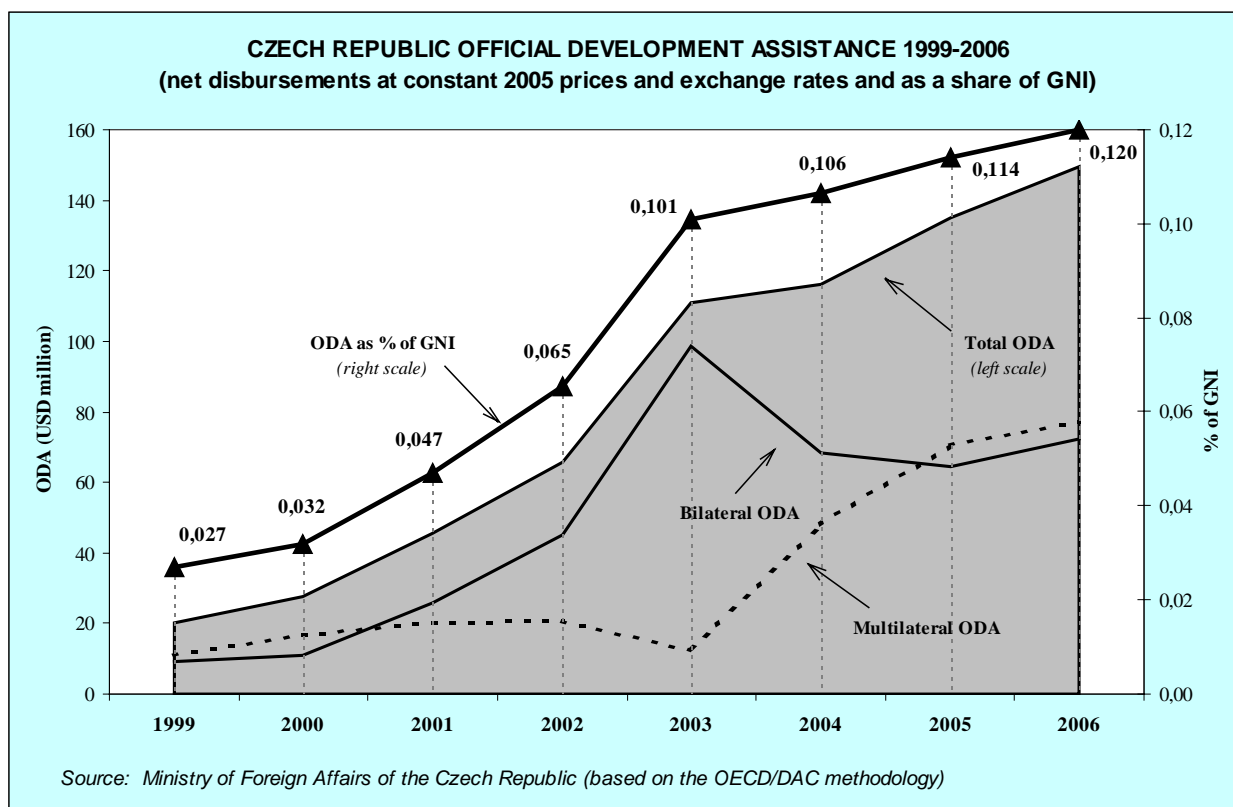
In 2006, Czech ODA increased by 10.5% in real terms and reached USD million 160.9 which represents 0.12% of gross national income. The increase was primarily due to the Czech contribution to the EU development budget, debt forgiveness, the reconstruction relief in Asia and the Middle East as well as due to the increase in the core budget for bilateral projects. All assistance was provided in the form of grants.



In 2006, the Czech ODA comprised technical assistance including scholarships (12% of the total), investment projects (5%), special reconstruction programmes (8%), humanitarian aid (6%), assistance to refugees in donor country (5%), debt relief (9%) and administrative costs, including public awareness (3%). This makes 48% in total for bilateral activities while multilateral assistance (including EU) amounted to 52% of the total ODA.

In geographical terms, the Czech ODA was focused on the Balkans (Serbia and Bosnia-Herzegovina), Middle East (Iraq), South and Central Asia (Afghanistan) and the Far East (Indonesia and Mongolia). This broadly corresponds to the fact that medium-term programmes with eight priority countries (Angola, Bosnia and Herzegovina, Moldova, Mongolia, Serbia and Montenegro, Vietnam, Yemen and Zambia) were launched in 2006. In sectoral terms, the main thematic focus was on good governance and post-conflict situations, education, environmental protection and agriculture.

In the second half of 2006, the OECD Development Assistance Committee conducted a Special Review of Czech Republic's development cooperation programme. The Czech Republic was the first donor country outside the DAC to go through this kind of a review. The review process culminated in April 2007, when the Czech Ministry of Foreign Affairs hosted a round-table with the participation of OECD and other experts. The DAC review has proved to be an important input into the reform process of the Czech Republic's development cooperation.



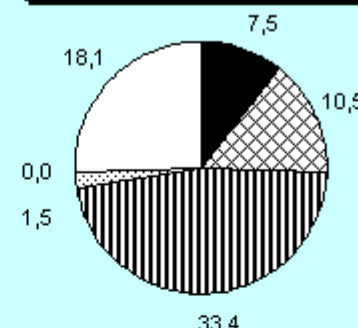
## CZECH REPUBLIC

| Net ODA                   | 2005   | 2006   | Change 2005/06 |
|---------------------------|--------|--------|----------------|
| Current (USD m)           | 135,1  | 160,9  | 19,0%          |
| Constant (2004 USD m)     | 135,1  | 149,3  | 10,5%          |
| In Czech koruna (million) | 3236   | 3637   | 12,4%          |
| ODA/GNI                   | 0,114% | 0,120% |                |
| Bilateral share           | 47,7%  | 48,3%  |                |

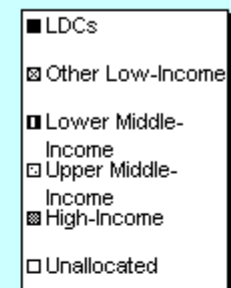
| Top Ten Recipients of Gross ODA (USD million) |      |
|---|------|
| 1 Iraq  | 10,0 |
| 2 Serbia (& Montenegro)                       | 6,4  |
| 3 Ukraine                                     | 3,7  |
| 4 Afghanistan                                 | 3,1  |
| 5 Mongolia                                    | 2,9  |
| 6 Pakistan                                    | 2,2  |
| 7 Indonesia                                   | 2,0  |
| 8 Bosnia-Herzegovina                          | 1,7  |
| 9 Viet Nam                                    | 1,7  |
| 10 Belarus                                    | 1,5  |

Gross Bilateral ODA, 2005-06 average, unless otherwise shown

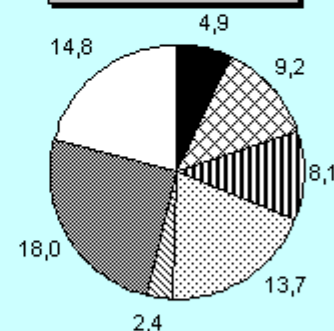
### By Income Group (USD m)



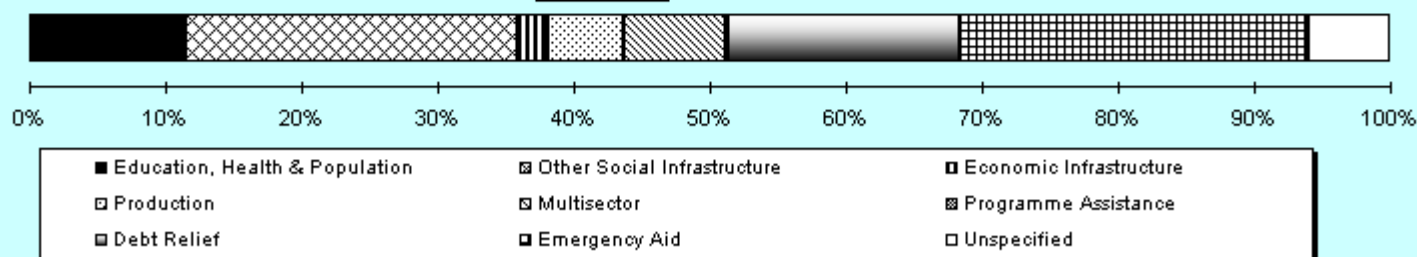
Clockwise from top



### By Region (USD m)



### By Sector



Source: Ministry of Foreign Affairs of the Czech Republic (based on the OECD/DAC methodology)

CZECH REPUBLIC ODA AT A GLANCE  
(2005-2006 average)

| CZECH REPUBLIC<br>DEVELOPMENT COOPERATION | Official Development Assistance of the Czech Republic (Net Disbursements) |     |      |     |      |     |      |     |      |     |
|---|---|-----|------|-----|------|-----|------|-----|------|-----|
|   | 2002  |     | 2003 |     | 2004 |     | 2005 |     | 2006 |     |
|   | CZK   | USD | CZK  | USD | CZK  | USD | CZK  | USD | CZK  | USD |

|                                      |               |               |               |               |               |               |               |               |               |               |
|--------------------------------------|---------------|---------------|---------------|---------------|---------------|---------------|---------------|---------------|---------------|---------------|
| <b>ODA total</b>                     | <b>1485,9</b> | <b>45,39</b>  | <b>2556,0</b> | <b>90,55</b>  | <b>2780,1</b> | <b>108,17</b> | <b>3236,0</b> | <b>135,13</b> | <b>3636,9</b> | <b>160,86</b> |
| bilateral ODA                        | 1025,0        | 31,31         | 2268,3        | 80,36         | 1631,5        | 63,48         | 1541,9        | 64,39         | 1756,7        | 77,70         |
| investment aid                       | 280,2         | 8,56          | 214,2         | 7,59          | 352,1         | 13,70         | 164,0         | 6,85          | 175,9         | 7,78          |
| special programmes (incl. peaceb.)   | -             | -             | 1252,7        | 44,38         | 377,0         | 14,67         | 227,7         | 9,51          | 282,8         | 12,51         |
| technical cooperation (incl. schol.) | 89,4          | 2,73          | 282,0         | 9,99          | 281,4         | 10,95         | 363,8         | 15,19         | 442,0         | 19,55         |
| emergency and food aid               | 34,7          | 1,06          | 30,2          | 1,07          | 51,1          | 1,99          | 247,6         | 10,34         | 216,6         | 9,58          |
| refugees in donor country            | 240,9         | 7,36          | 162,6         | 5,76          | 180,7         | 7,03          | 206,9         | 8,64          | 178,8         | 7,91          |
| debt relief                          | 380,1         | 11,61         | 247,8         | 8,78          | 275,8         | 10,73         | 229,9         | 9,60          | 333,0         | 14,73         |
| administration costs and P.R.        | -             | -             | 78,8          | 2,79          | 113,3         | 4,41          | 102,0         | 4,26          | 127,5         | 5,64          |
| multilateral ODA                     | 460,9         | 14,08         | 287,6         | 10,19         | 1148,6        | 44,69         | 1694,0        | 70,74         | 1880,2        | 83,16         |
| <i>memo: bilateral ODA %</i>         |               | <i>69,0%</i>  |               | <i>88,7%</i>  |               | <i>58,7%</i>  |               | <i>47,7%</i>  |               | <i>48,3%</i>  |
| <b>ODA/GNI</b>                       |               | <b>0,065%</b> |               | <b>0,101%</b> |               | <b>0,106%</b> |               | <b>0,114%</b> |               | <b>0,120%</b> |
| GNI                                  | 2275600       | 69514,0       | 2532400       | 89716         | 2611500       | 101611        | 2839100       | 118558        | 3027390       | 133902        |
| GNI deflator (2005=100%)             | 94,4          |               | 96,2          |               | 99,8          |               | 100,0         |               | 101,7         |               |
| exchange rate CZK/USD                |               | 32,736        |               | 28,227        |               | 25,701        |               | 23,947        |               | 22,609        |
| ODA constant prices 2005             | 1574,0        | 65,73         | 2656,9        | 110,95        | 2785,9        | 116,34        | 3236,0        | 135,13        | 3576,1        | 149,33        |

|  |               |              |               |              |               |              |               |              |                |              |
|--|---------------|--------------|---------------|--------------|---------------|--------------|---------------|--------------|----------------|--------------|
| <b>bilateral aid by region:</b>          |               |              |               |              |               |              |               |              |                |              |
| Sub-Saharan Africa                       | 38,0          | 1,16         | 61,5          | 2,18         | 97,1          | 3,78         | 95,5          | 3,99         | 129,78         | 5,74         |
| South and Central Asia                   | 154,2         | 4,71         | 232,6         | 8,24         | 259,1         | 10,08        | 237,8         | 9,93         | 192,40         | 8,51         |
| Other Asia and Oceania                   | 86,8          | 2,65         | 167,7         | 5,94         | 262,4         | 10,21        | 167,9         | 7,01         | 206,19         | 9,12         |
| Middle East and North Africa             | 40,3          | 1,23         | 1174,2        | 41,60        | 398,6         | 15,51        | 229,7         | 9,59         | 403,34         | 17,84        |
| Latin America and Caribbean              | 30,8          | 0,94         | 52,2          | 1,85         | 67,3          | 2,62         | 51,5          | 2,15         | 57,88          | 2,56         |
| Europe                                   | 281,5         | 8,60         | 332,2         | 11,77        | 271,4         | 10,56        | 407,1         | 17,00        | 430,48         | 19,04        |
| Unspecified (incl. debt relief)          | 393,5         | 12,02        | 247,8         | 8,78         | 275,5         | 10,72        | 352,5         | 14,72        | 336,65         | 14,89        |
| <b>suma</b>                              | <b>1025,0</b> | <b>31,31</b> | <b>2268,3</b> | <b>80,36</b> | <b>1631,5</b> | <b>63,48</b> | <b>1541,9</b> | <b>64,39</b> | <b>1756,72</b> | <b>77,70</b> |
| <b>bilateral aid by income group:</b>    |               |              |               |              |               |              |               |              |                |              |
| LDCs                                     | 67,8          | 2,07         | 228,9         | 8,11         | 242,4         | 9,43         | 123,1         | 5,14         | 224,73         | 9,94         |
| Other low-income                         | 206,9         | 6,32         | 227,8         | 8,07         | 332,6         | 12,94        | 290,2         | 12,12        | 202,35         | 8,95         |
| Lower middle-income                      | 317,9         | 9,71         | 1536,7        | 54,44        | 744,0         | 28,95        | 734,0         | 30,65        | 817,54         | 36,16        |
| Upper middle-income                      | 28,8          | 0,88         | 12,7          | 0,45         | 14,1          | 0,55         | 22,7          | 0,95         | 44,09          | 1,95         |
| High income                              | 0,0           | 0,00         | 0,0           | 0,00         | 0,0           | 0,00         | 0,0           | 0,00         | 0,00           | 0,00         |
| Unallocated (incl. debt relief)          | 403,6         | 12,33        | 262,2         | 9,29         | 298,4         | 11,61        | 371,9         | 15,53        | 468,01         | 20,70        |
| <b>suma</b>                              | <b>1025,0</b> | <b>31,31</b> | <b>2268,3</b> | <b>80,36</b> | <b>1631,5</b> | <b>63,48</b> | <b>1541,9</b> | <b>64,39</b> | <b>1756,72</b> | <b>77,70</b> |
| <b>bilateral aid by sector:</b>          |               |              |               |              |               |              |               |              |                |              |
| Education, health, population            | 102,8         | 3,14         | 827,9         | 29,33        | 233,6         | 9,09         | 169,5         | 7,08         | 210,26         | 9,30         |
| Other social infrastructure              | 13,1          | 0,40         | 114,0         | 4,04         | 401,7         | 15,63        | 348,4         | 14,55        | 451,73         | 19,98        |
| Economic infrastructure                  | 5,2           | 0,16         | 146,5         | 5,19         | 114,6         | 4,46         | 32,1          | 1,34         | 40,02          | 1,77         |
| Production                               | 41,6          | 1,27         | 81,0          | 2,87         | 90,5          | 3,52         | 86,2          | 3,60         | 100,61         | 4,45         |
| Multisector                              | 206,9         | 6,32         | 579,5         | 20,53        | 170,1         | 6,62         | 133,6         | 5,58         | 115,53         | 5,11         |
| Programme assistance                     | 7,2           | 0,22         | 4,2           | 0,15         | 0,0           | 0,00         | 4,1           | 0,17         | 0,00           | 0,00         |
| Debt relief                              | 380,1         | 11,61        | 247,8         | 8,78         | 275,8         | 10,73        | 229,9         | 9,60         | 333,03         | 14,73        |
| Emergency aid                            | 268,1         | 8,19         | 188,6         | 6,68         | 231,8         | 9,02         | 450,4         | 18,81        | 395,43         | 17,49        |
| Unspecified (incl. administrative costs) | 0,0           | 0,00         | 78,8          | 2,79         | 113,3         | 4,41         | 87,6          | 3,66         | 110,11         | 4,87         |
| <b>suma</b>                              | <b>1025,0</b> | <b>31,31</b> | <b>2268,3</b> | <b>80,36</b> | <b>1631,5</b> | <b>63,48</b> | <b>1541,9</b> | <b>64,39</b> | <b>1756,72</b> | <b>77,70</b> |
| <b>multilateral aid by channel:</b>      |               |              |               |              |               |              |               |              |                |              |
| United Nations                           | 219,3         | 6,70         | 149,9         | 5,31         | 141,9         | 5,52         | 106,6         | 4,45         | 118,47         | 5,24         |
| EC                                       | 0,0           | 0,00         | 0,0           | 0,00         | 862,8         | 33,57        | 1478,0        | 61,72        | 1554,14        | 68,74        |
| World Bank Group                         | 163,4         | 4,99         | 68,9          | 2,44         | 63,7          | 2,48         | 58,9          | 2,46         | 84,11          | 3,72         |
| Regional Banks                           | 0,0           | 0,00         | 0,0           | 0,00         | 0,0           | 0,00         | 0,0           | 0,00         | 0,00           | 0,00         |
| Other Agencies                           | 78,2          | 2,39         | 68,9          | 2,44         | 80,2          | 3,12         | 50,5          | 2,11         | 123,45         | 5,46         |
| <b>suma</b>                              | <b>460,9</b>  | <b>14,08</b> | <b>287,6</b>  | <b>10,19</b> | <b>1148,6</b> | <b>44,69</b> | <b>1694,0</b> | <b>70,74</b> | <b>1880,16</b> | <b>83,16</b> |

| Top 10 Recipients each year | 2002        |      | 2003        |       | 2004        |       | 2005        |      | 2006        |       |
|-----------------------------|-------------|------|-------------|-------|-------------|-------|-------------|------|-------------|-------|
|                             | Recipient   | USD  | Recipient   | USD   | Recipient   | USD   | Recipient   | USD  | Recipient   | USD   |
| 1                           | SERBIA & M. | 3,42 | IRAQ        | 39,96 | IRAQ        | 13,66 | IRAQ        | 8,13 | IRAQ        | 11,80 |
| 2                           | UKRAINE     | 2,15 | AFGHANISTAN | 6,12  | SERBIA & M. | 6,88  | SERBIA & M. | 6,89 | SERBIA      | 6,00  |
| 3                           | ROMANIA     | 1,78 | SERBIA & M. | 4,15  | AFGHANISTAN | 6,08  | UKRAINE     | 4,62 | AFGHANISTAN | 4,20  |
| 4                           | BOSNIA-H.   | 1,50 | BOSNIA-H.   | 3,93  | UKRAINE     | 4,58  | PAKISTAN    | 3,70 | INDONESIA   | 3,28  |
| 5                           | INDIA       | 1,43 | VIET NAM    | 2,04  | RUSSIA      | 3,96  | MONGOLIA    | 3,04 | MONGOLIA    | 2,72  |
| 6                           | MOLDOVA     | 1,36 | MONGOLIA    | 1,68  | VIET NAM    | 3,05  | AFGHANISTAN | 1,96 | UKRAINE     | 2,69  |
| 7                           | GEORGIA     | 0,99 | RUSSIA      | 1,64  | CHINA       | 2,94  | VIET NAM    | 1,42 | BOSNIA-H.   | 2,13  |
| 8                           | MACEDONIA   | 0,98 | MOLDOVA     | 1,62  | MONGOLIA    | 2,88  | BOSNIA-H.   | 1,34 | VIET NAM    | 1,91  |
| 9                           | VIET NAM    | 0,91 | CHINA       | 1,31  | GEORGIA     | 1,36  | INDIA       | 1,31 | BELARUS     | 1,71  |
| 10                          | MONGOLIA    | 0,78 | UKRAINE     | 1,07  | KYRGYZ R.   | 1,14  | CHINA       | 1,30 | EGYPT       | 1,35  |

Source: Ministry of Foreign Affairs of the Czech Republic

<http://www.mfa.cz/aid>

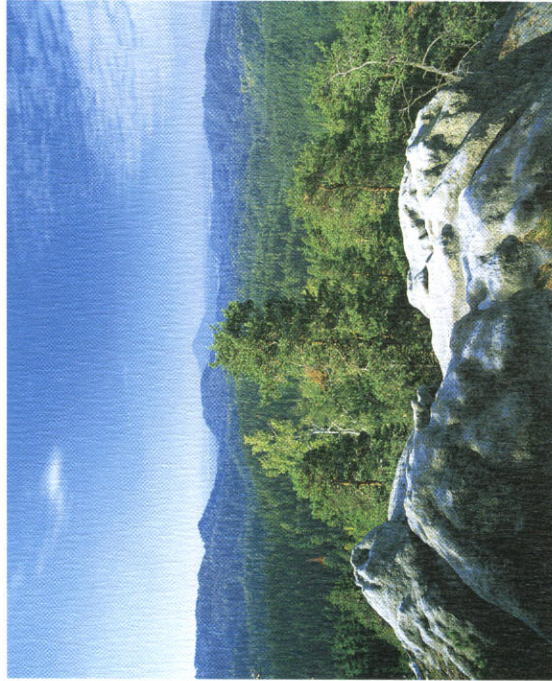


## ČESKÉ ŠVÝCARSKO (BOHEMIAN SWITZERLAND)

Area: 79.3 km<sup>2</sup>  
Altitude: 120 m (border crossing in Hřensko) – 619 m (the mountain Říčovský vrch)

The unique geomorphology of sandstone rocks, the broken topography and the rich biodiversity are the main objects of protection in the national park. The few herb-rich beech forests with abundant number of plant species on basalt formations are in sharp contrast to extensive pine and spruce forests growing on sandstone. Rare flora is represented, for instance, by interrupted clubmoss or Labrador-tea, rare fauna is represented by lynx, eagle owl, or peregrine falcon. The most famous formation national park is the great rock arch of the Pravčická brána that is unique in Europe. Within as well as around the national park are also valuable buildings of folk architecture.

**Bohemian Switzerland National Park Administration:**  
Pravčická 52, 407 46 Krásná Lípa  
Phone/Fax: +420-413-383212  
n.park@npjcs.cz, www.npjcs.cz

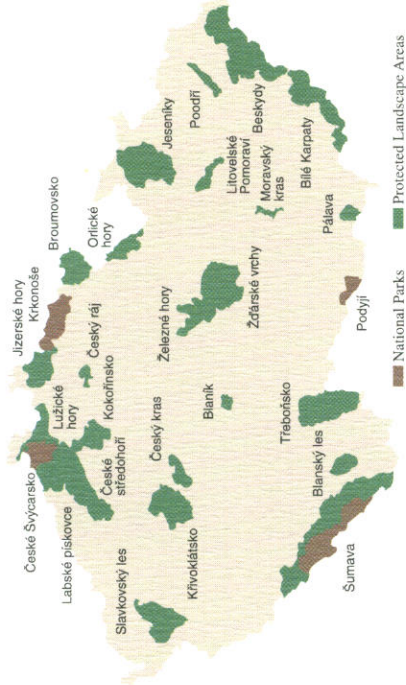


## KRKKONOŠE (GIANT MOUNTAINS)

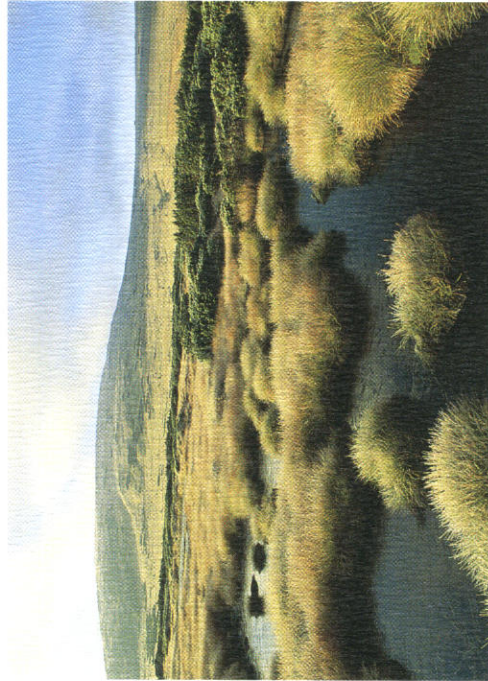
Area: 363 km<sup>2</sup> (national park) and 184 km<sup>2</sup> (protective zone)  
Altitude: 383 m (Horní Sytová) – 1602 m (Šnežka Mountain)

The Giant Mountains are a historical region important due to its nature and culture in the North of Bohemia. Their attractiveness consists in unusually diverse landscape and abundance of species of flora and fauna, which occur there. There can be found deciduous as well as mixed forests at the mountain foots, autochthonous and secondary mountain spruce forests, dwarf-pine growths and herb-rich alpine meadows, glacial cirques with famous botanical gardens as well as vast lichen tundra atop the highest ridges there. The Giant Mountains climate is cold and very wet with dominating western air-flow from the Atlantic Ocean. There are springs of four main watercourses there – the Labe River, the Úpa River, the Jizera River, and the Mumlava River.

**Administration of the Krkonoše National Park residence:**  
Dobrovského 3, 543 11 Vrchlabí  
Phone: +420-438-456111; Fax: +420-438-422095  
posta@krnap.cz, www.krnap.cz



# NATIONAL PARKS OF THE CZECH REPUBLIC



For Ministry of the Environmental of the Czech Republic published  
ASCO vydavatelství 2000

photo K. Hník, V. Hošek, B. Prokůpek, V. Sojka

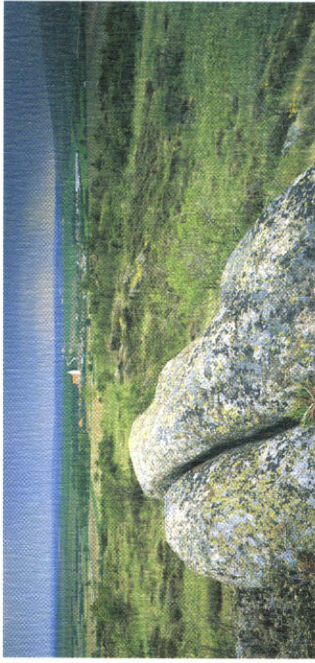


## PODYJÍ (DYJE RIVER VALLEY)

Area: 63 km<sup>2</sup> (national park) and 29 km<sup>2</sup> (protection zone)  
Altitude: 226 m (the Dyje River at the Znojmo Dam) – 536 m (Bull's Mountain)

This is a showcase of uniquely preserved river valley in the landscape covered with rich forests along the borderline with Austria. The Dyje River Valley National Park features extraordinary sceneries composed of a wide palette of rock slopes and steep walls, meanders, vast scree fields and gorges that are hard to go through yet also alluvial plain meadows along the Dyje River stream and sunny forest-steppes with varied carpets of thermophilous flora. The territory is characteristic for its prodigious biodiversity in flora and fauna and also high concentration of species populations on a relatively small area. The significant species richness of flora and fauna occurs there due to the protected area location at the frontier of two biogeographic systems.

**Administration of the Podýjí National Park residence:**  
Na Vyhlídce 5, 669 01 Znojmo  
Phone: +420-624-226722; Fax: +420-624-221115  
info@npodyji.cz, www.nppodyji.cz



## ŠUMAVA (ŠUMAVA MOUNTAINS)

Area: 690.3 km<sup>2</sup> (national park) and 979.7 km<sup>2</sup> (protected landscape area)  
Altitude: 600 m (the Otava River valley near Rejstejn) - 1378 m (Plechý Mountain)

Since the ancient times the forested mountain range along the borderline to Bavaria has been known for its vast area, mysterious character, and beauty. The forest inspired numerous poets, writers, or composers. Its central part has almost 85 % of area forested and at higher altitude locations there are even remnants of primeval forests. The whole range is scattered with abundant wetlands and raised bogs and the still beauty of glacial lakes is famous. The territory makes home to a number of protected species of fauna and flora, many of them are relicts of the Ice Age. The diffuse imprints of historical settlements and a series of technology monuments complement the uniqueness of this Green Roof of Europe. The Šumava Protected Landscape Area surrounds the National Park territory.

**Administration of the Šumava National Park and the Protected Landscape Area residence:**  
I. máje 260, 385 01 Vimperk  
Phone: +420-339-450111; Fax: +420-339-413019  
vimperk@npsumava.cz, www.npsumava.cz







## ORLICKÉ HORY

Area 204 km<sup>2</sup>

Altitude 406 to 1115 m (Velká Deštná)

Picturesque mountain range with deep, sheer stream and river valleys. Mostly artificially planted spruce forests are to a large extent damaged by immissions. In places, islands of natural forest with beech prevailing have survived.

Administration of PLA Orlické hory, Panská 79,

516 01 Rychov nad Kněžnou

Tel.: +420-445-22337, fax 23414,

e-mail: [chko.oh@worldline.cz](mailto:chko.oh@worldline.cz)

## POODŘÍ

Area 82 km<sup>2</sup>

Altitude

214 (Odra River) to 298 m

Area of the naturally meandering river Odra with a number of tributaries, oxbows, periodical pools and lakes. Wetlands of European importance with plant and animal species characteristic of this environment.

Administration of PLA Poodří, Trocnovská 2, 702 00 Ostrava

Tel., fax: +420-69-6133 3337, e-mail: [poodri@schkoer.cz](mailto:poodri@schkoer.cz)



## TŘEBOŇSKO

Area 700 km<sup>2</sup>

Altitude 410 (Veselí n. L.) to 550 m (Homolka)

Wetland basin sensitively transformed into a fishpond area with preserved peat-bogs. Important nesting site for bird populations on the European scale. The area is part of the network of UNESCO biosphere reserves and the network of internationally protected wetlands.

Administration of PLA Třeboňsko, Václ. 121, 379 01 Třeboň

Tel./fax: +420-333-721 400, e-mail: [chko.tr@trbon.cz](mailto:chko.tr@trbon.cz)



## PÁLAVA

Area 83 km<sup>2</sup>

Altitude 163 (Dýle River) to 554 m (Devín Hill)

Giant calcareous cliff with very rich steppe and forest flora and fauna. In the valley of the Dýle River, floodplain forests with unique wetlands have been preserved. The area around Mikulov is noticeably influenced by viticulture. As an example of the harmonic utilisation of nature by man, the area has been included in the network of UNESCO biosphere reserves within the MAB programme.

Administration of PLA Pálava

Náměstí 32, 692 01 Mikulov

Tel/fax: +420-625-511 130

e-mail: [chko@palava.cz](mailto:chko@palava.cz)

## SLAVKOVSKÝ LES

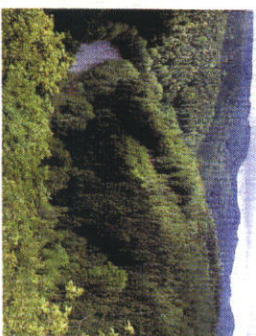
Area 610 km<sup>2</sup>

Altitude 374 (Ohře River) to 983 m (Lesný Hill)

Woody area acting as the preserver of medicinal springs for western Bohemian spas. Only remains of natural beech and fir-beech forests have survived here, the rest has been replaced by spruce. An important part of the area is formed by extensive peat-bogs.

Administration of PLA Slavkovský les,

Anglická 119-15, 353 01 Mariánské Lázně, Tel.: +420-165-624 081, fax: 620 081



## ŽDÁRSKÉ VRCHY

Area 709 km<sup>2</sup>

Altitude 490 to 836 m (Devět skal Hill)

Harmonic landscape of forests, meadows, pastures and lakes. Characteristic are isolated gneiss rocks. The area is cut through by the main European watershed boundary between the North Sea and the Black Sea. Today almost half of the area is covered by spruce forests.

Administration of PLA Ždárské vrchy

Hutářova 1, 591 01 Žďár nad Sázavou

Tel., fax: +420-616-228 86,

e-mail: [zdarvrch@schkoer.cz](mailto:zdarvrch@schkoer.cz)



## ŽELEZNÉ HORY

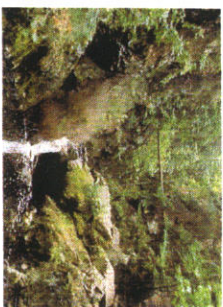
Area 284 km<sup>2</sup>

Altitude 268 to 668 m (Vavřík)

The mountain range and the eastern part of this area are wooded, the rest is a patchwork of meadows and fields with many solitary trees and shrubs. As for geological structure the area belongs to the most diverse in the Czech Republic.

Administration of PLA Železné hory, Slaniňanská 66,

538 25 Nasavrky, Tel.: +420-455-677 729



# PROTECTED LANDSCAPE AREAS

# OF THE CZECH REPUBLIC









an undulate plateau with volcanic knags, cones and domes. The area stands out for its rich flora and fauna.

**Administration of PLA České středohoří**  
Atičhalská 260-14, 412 01 Lihoměřice  
Ml.: +420-416-732 387, fax: 732 395, e-mail: schkoccs@iol.cz



## JESENÍKY

Area 744 km<sup>2</sup>

Altitude 339 (Mkalovice) to 1492 m (Prácheň)  
Large mountain range in northern Moravia. The highest elevations are covered with Margrass clearings. The lower parts are afforested mostly with spruce. Sporadically, near-pristine forest stands can be found. Velká kotlina in the National Nature Reserve Prácheň has a specific climate and is unique on the European scale. Also mountain peat-bogs are of interest.

**Administration of PLA Jeseníky**  
U Jeseníka 93, Bukovice 791 01  
Tel.: +420-645-402 228  
e-mail: jeseniky@schkoer.cz



## ČESKÝ RÁJ

Area 92 km<sup>2</sup>

Altitude 234 (Zábok) to 488 m (Trosky)  
Romantic landscape of sandstone rocks supplemented by dominants of erupive rocks with conspicuous shapes and with architectural sights. Among the most famous is Trosky. The varied scenery and the biological diversity is supplemented by stretches of water with adjacent wetlands.

**Administration of PLA Český ráj, Dvořákova 294, 511 01 Turnov**  
Tel.: +420-436-21900, fax 215 78, e-mail: cekkyvj@mail.drtngs.cz

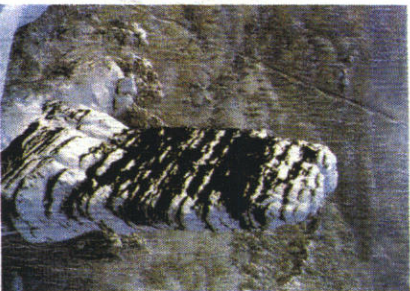
## LABSKÉ PÍSKOVCE

Area 324 km<sup>2</sup>

Altitude 118 (Hřensko) to 726 m (Sněžník)

This strongly varied area represents, together with neighbouring Sächsischer Schweiz National Park, the most extensive sandstone area in Europe. Deep, enclosed valleys with temperature inversion enable the existence of cool-loving plant and animal species, even at these low altitudes.

**Administration of PLA Labské pískovce**  
Dlouhá Hřida 1257, 405 01 Děčín  
Tel., fax: +420-412-51 82 02  
e-mail: schkolp@space.cz



## LUŽICKÉ HORY

Area 268 km<sup>2</sup>

Altitude 313 to 793 m (Luč)²

Woody area with an interesting geological structure. In a tableau of predominantly sandstone, domes and ridges of erupive minerals are breaking through in many places. Especially in the western part of the area traditional country buildings to houses with basements to can still be found.

**Administration of PLA Lužické hory**  
Školní 12, 471 25 Jablonné v Podještědí  
Tel.: +420-424-762 355, e-mail: schkolh@iol.cz



## MORAVSKÝ KRAS

Area 94 km<sup>2</sup>

Altitude 269 to 613 m (Hetišova skála)

The most beautiful karst area of the Czech Republic with vast cave systems as well as surface karst formations. Part of the underground is accessible to the public. In the caves marks of long-extinct life and the development of human society have been preserved.

**Administration of PLA Moravský kras**  
Sadová 2, 678 01 Blansko,  
Tel., fax: +420-506-418 158, e-mail: schkonk@iol.cz



## JIZERSKÉ HORY

Area 366 km<sup>2</sup>

Altitude 320 to 1124 m (Sněžk)

Mountain area where besides large areas of spruce forest seriously damaged by acid rain (today being renovated) valuable mountain peat-bog areas are found. On northern slopes a vast complex of beech forests has been preserved.

**Administration of PLA Jizerské hory**  
U Jezu 10, 460 01 Liberec  
Tel.: +420-48-5104771  
e-mail: schkojh@inbox.vol.cz

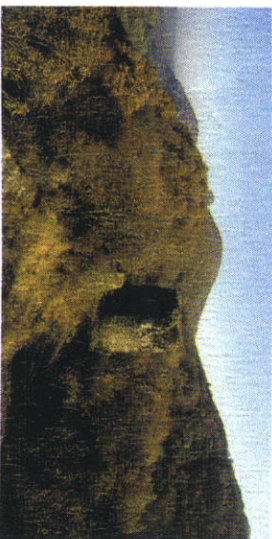
## KŘIVOKLÁTSKO

Area 628 km<sup>2</sup>

Altitude 223 to 616 m (Třchovná)

Area with sparsely populated hills in central Bohemia covered mostly with broadleaved forests. The geological diversity and the varied landscape are reflected in the extraordinary richness in plant and animal species. The harmonic co-existence of man and nature has been recognised by including Křivoklátsko in the network of UNESCO biosphere reserves.

**Administration of PLA Křivoklátsko**  
270 24 Zbečno č. 5  
Tel.: +420-313-554 834, fax 554 810  
e-mail: eko-kr@orfnet.cz



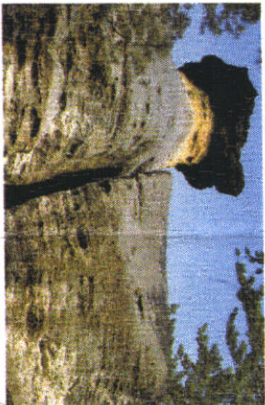
## KOKOŘÍNSKO

Area 272 km<sup>2</sup>

Altitude 175 to 614 m (Vlhošť)

Mesozoic ashlar sandstone enabled the formation of rock ending steeply into valleys. The so-called lids are describing. The nature and landscape value of the area most str is augmented by large wetlands of international entrance, the Kokořín Castle and folk architecture.

**Administration of PLA Kokořínsko, Česká 149, 276 01 Mělník, Tel., fax: +420-206-622 149**  
e-mail: chkokokotin@melnik.cesnet.cz



## LITOVELSKÉ POMORAVÍ

Area 96 km<sup>2</sup>

Altitude 210 to 345 m (Dobruška)

Altiatively narrow, almost 30 km long floodplain of the river Morava meandering laterally with numerous periodical and permanent branches alongside, as well as wetlands and oxbows with well-preserved floodplain forests and wetland communities, as island of international importance.

**Administration of PLA Litovelské Pomoraví, Lazcecká 6, 772 00 Olomouc**  
Tel.: +420-68-522 13 54, fax 522 63 44, e-mail: chkolipo@logn.onyx.cz



e-mail: ckras@iol.cz



Published by Ministry of Environment of the Czech Republic  
in collaboration with the Administration of the Protected Landscape Areas of the  
Folio: Archive of APLA ČR, F. Bárta, K. Gregor, R. Janák  
Graphic layout and print by ASCO - vydavatelství, spol. s r.o.  
Velvarská 53, Praha 6