

KNOWLEDGE CENTRE

WELCOME TO THE NALAS KNOWLEDGE CENTRE

Urban Planning

Испрати прашалник

Match all words Match at least one word

Candidates for Pilot Municipalities

page 1 of 4 : [next](#)



Network of Associations
of Local Authorities of
South East Europe

- 15** National Associations
- 4000** Local authorities
- 80** Million citizens

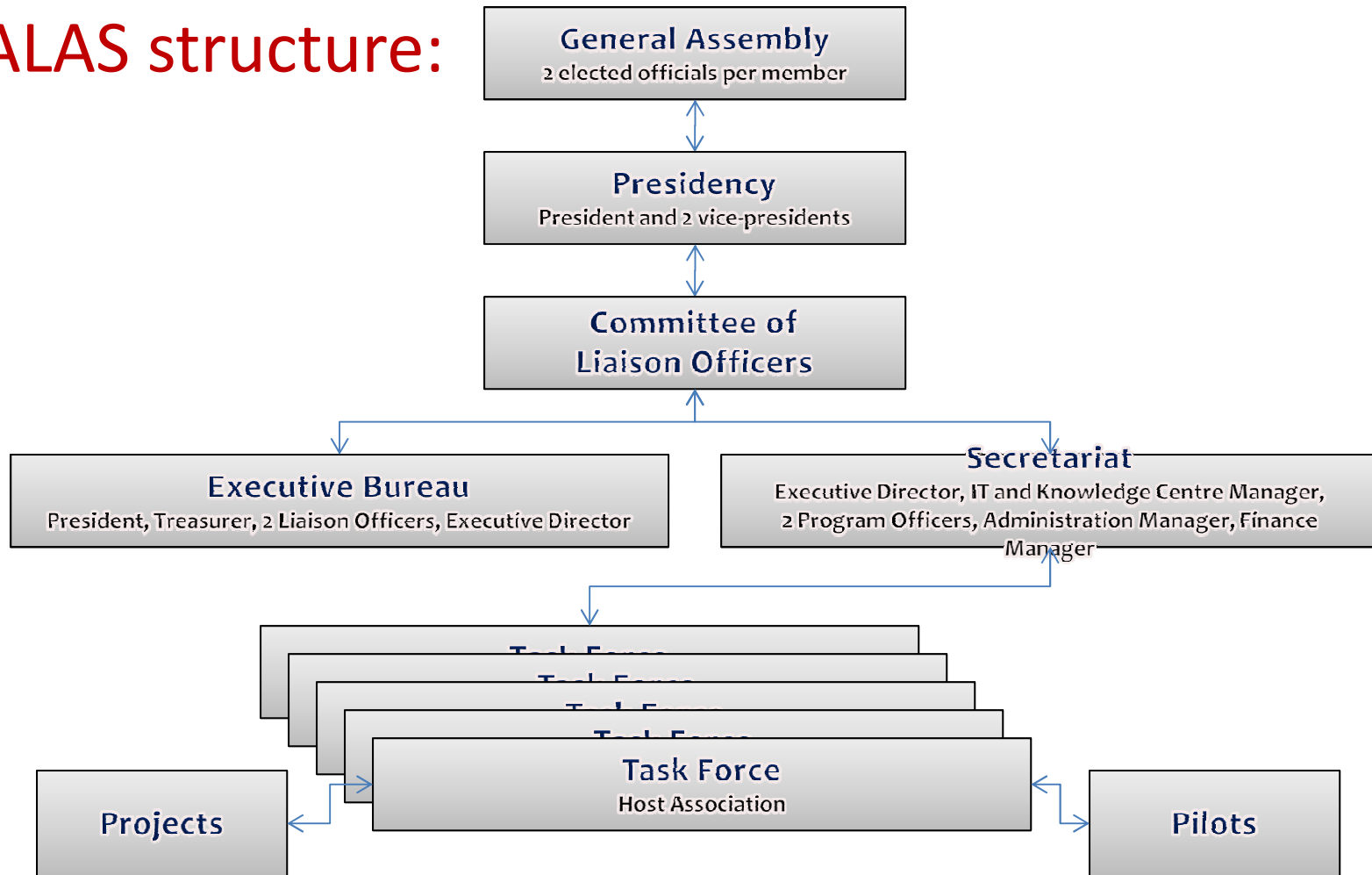


- NALAS promotes the process of decentralization and considers local self-government as a key player in the current process of transition affecting the various countries in South-East Europe.
- NALAS promotes the international cooperation of the local authorities, through their associations, at two levels:
 - international cooperation in South East Europe, and
 - international cooperation with local authorities and organizations from the rest of the world

NALAS

Network of Associations of Local Authorities of South-East Europe
Réseau des Associations de Pouvoirs Locaux de l'Europe du Sud-Est

NALAS structure:



Priorities:

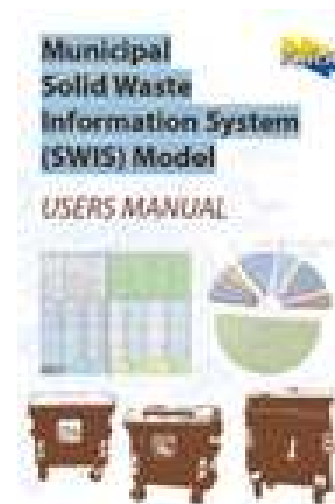
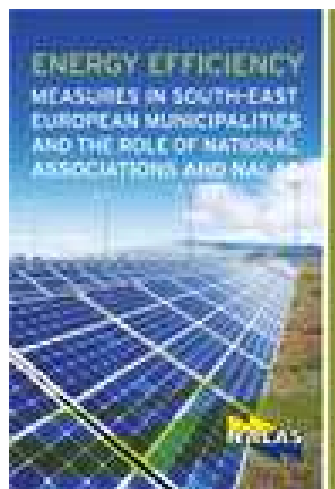
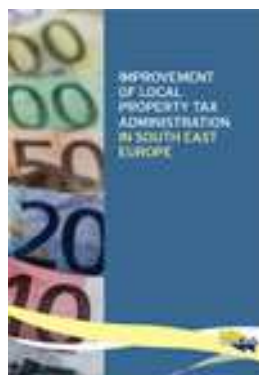
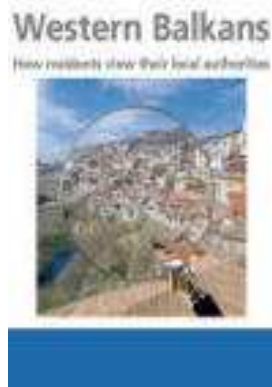
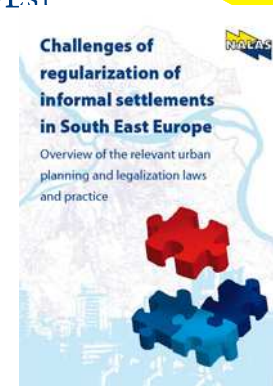
- **5 Task Forces:** Fiscal Decentralisation, Urban Planning, Energy Efficiency, Solid Waste and Water Management, Sustainable Tourism
- **Over 60 experts and practitioners**
- **40 Projects developed and implemented**



NALAS

Network of Associations of Local Authorities of South-East Europe
Réseau des Associations de Pouvoirs Locaux de l'Europe du Sud-Est

Products



Global Challenges

- Global financial crisis
- Energy crisis
- Climate change
- Political instability – prolonged transition

OPPORTUNITY:

urge for changes / awareness



NALAS

CHALLENGES:

Global crisis affecting local governments in SEE

- 1. Central government reduce public spending; cut transfers to local government**
- 2. Decline of real economic activity, leading to lower local government revenues from shared taxes and own sources**
- 3. Unemployment rises, increasing the pressure on local governments to provide social services and various forms of relief**



NALAS Sarajevo DECLARATION – 10 March 2011

200 Mayors, 1500 local government representatives:

- 1 Include local gov. dimension in strategic and operational planning for EU enlargement**
- 2. Involve LG and their associations in consultation**
- 3. Make pre accession financing available to local governments**



THANKS
for your attention

Georgi Hristov

NALAS Network of Associations of Local Authorities of South East Europe

Phone +389 2 3090818

info@nalas.eu

www.nalas.eu

