

# Wednesday 8 August

Training workbook 1: Key Questions

Training workbook 2: Target-setting

Target-setting Experience from South Africa

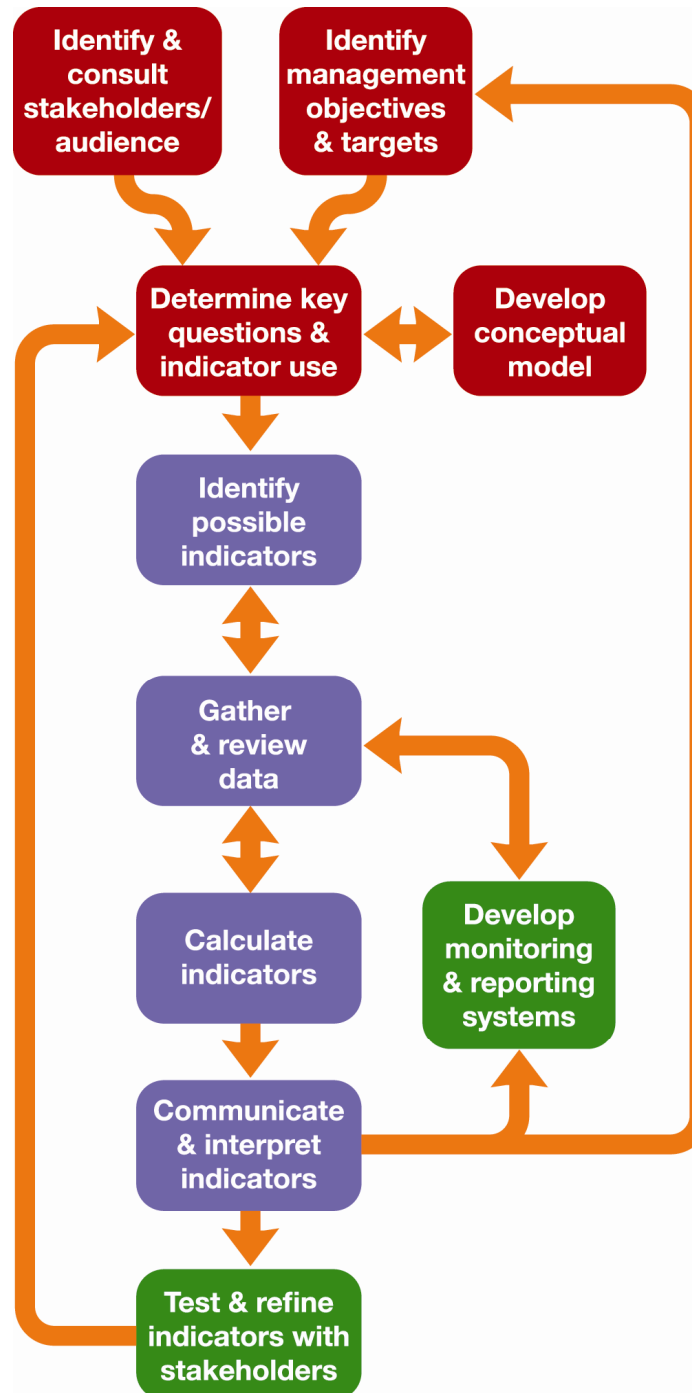
Training workbook 6: Calculate & communicate indicators

Group Exercise: What makes a successful Indicator?

Session conclusion

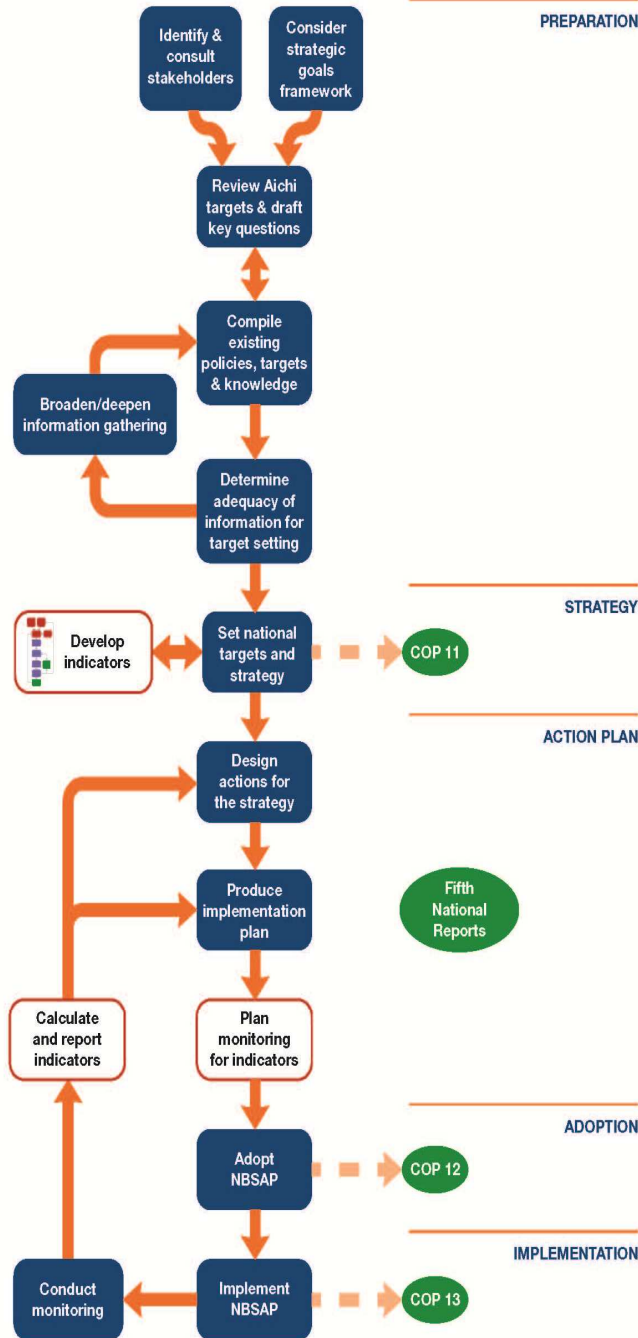
# The Biodiversity Indicators Development Framework

[www.bipnational.net](http://www.bipnational.net)

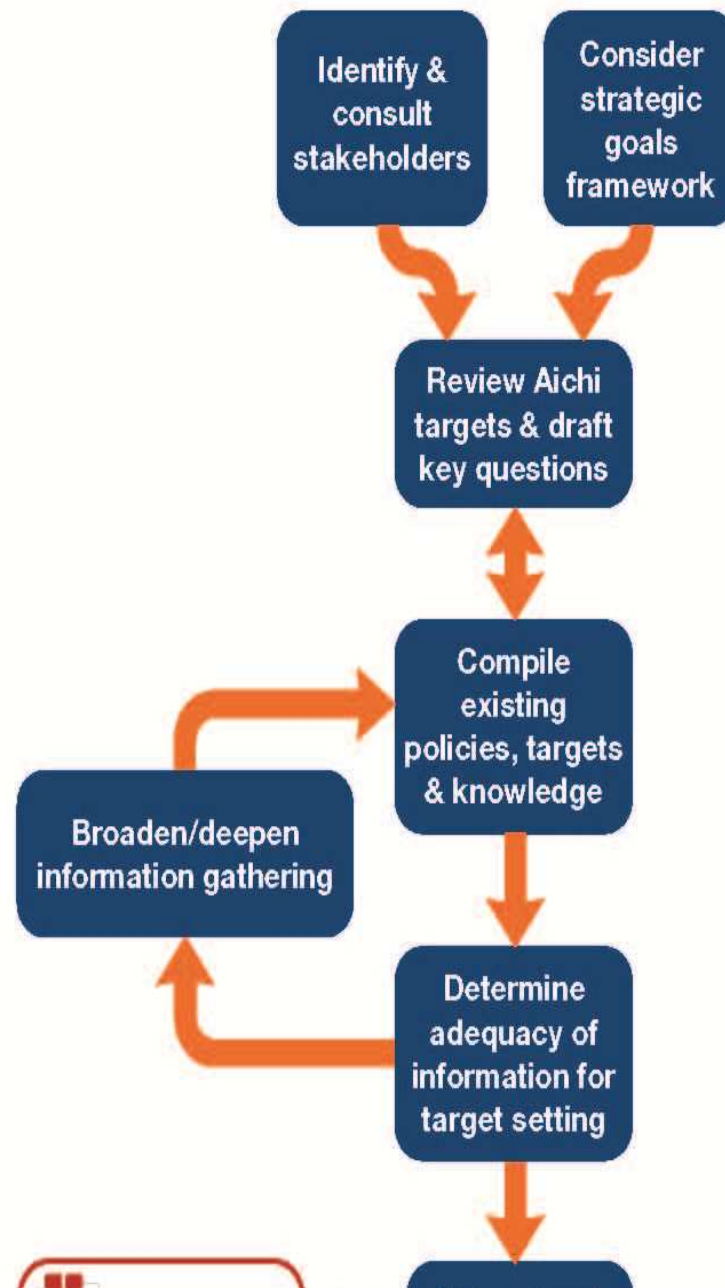


### Indicators and NBSAP Updating

CBD NBSAP Updating Steps



# Indicators and NBSAP Updating



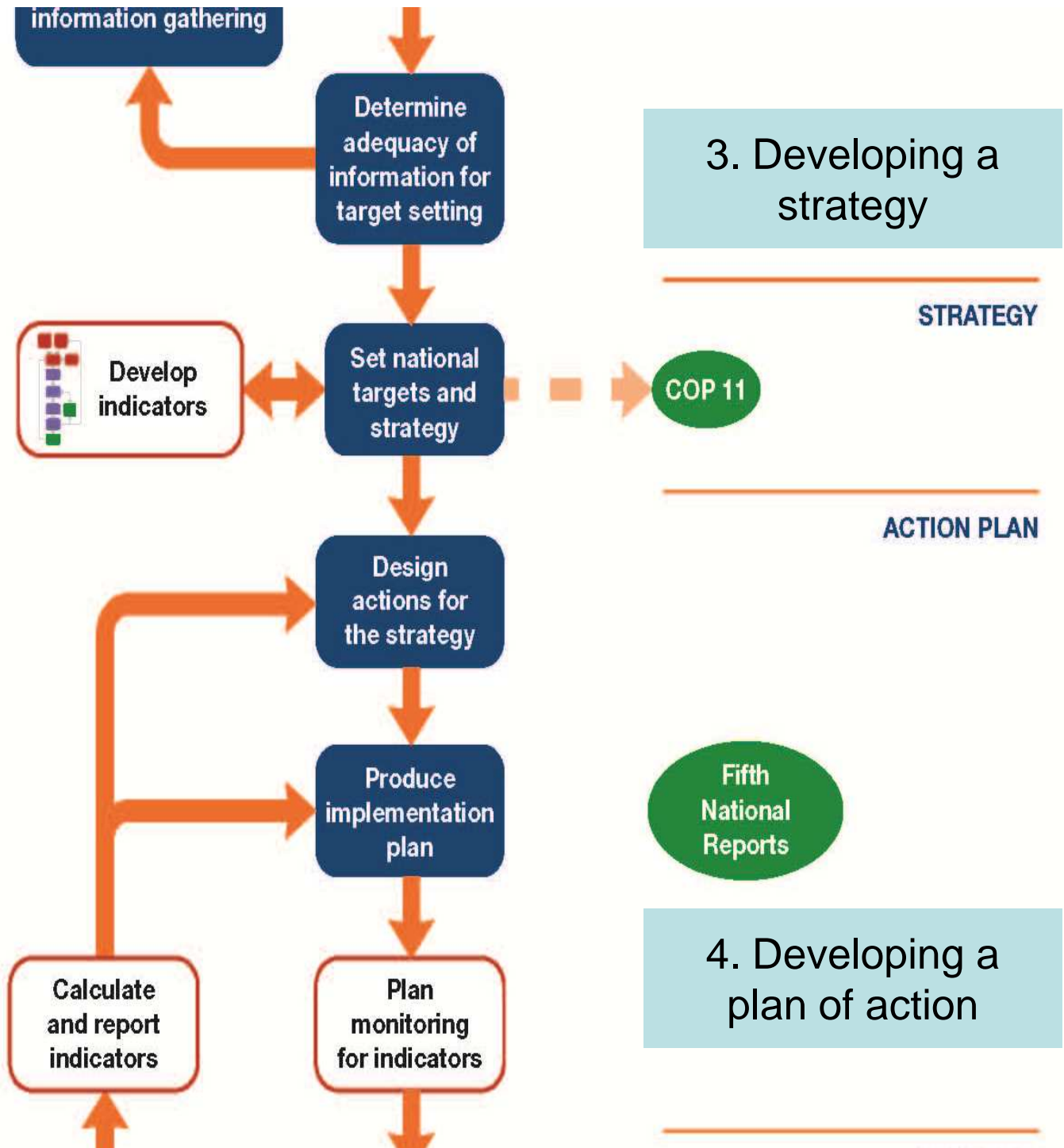
## CBD NBSAP Updating Steps

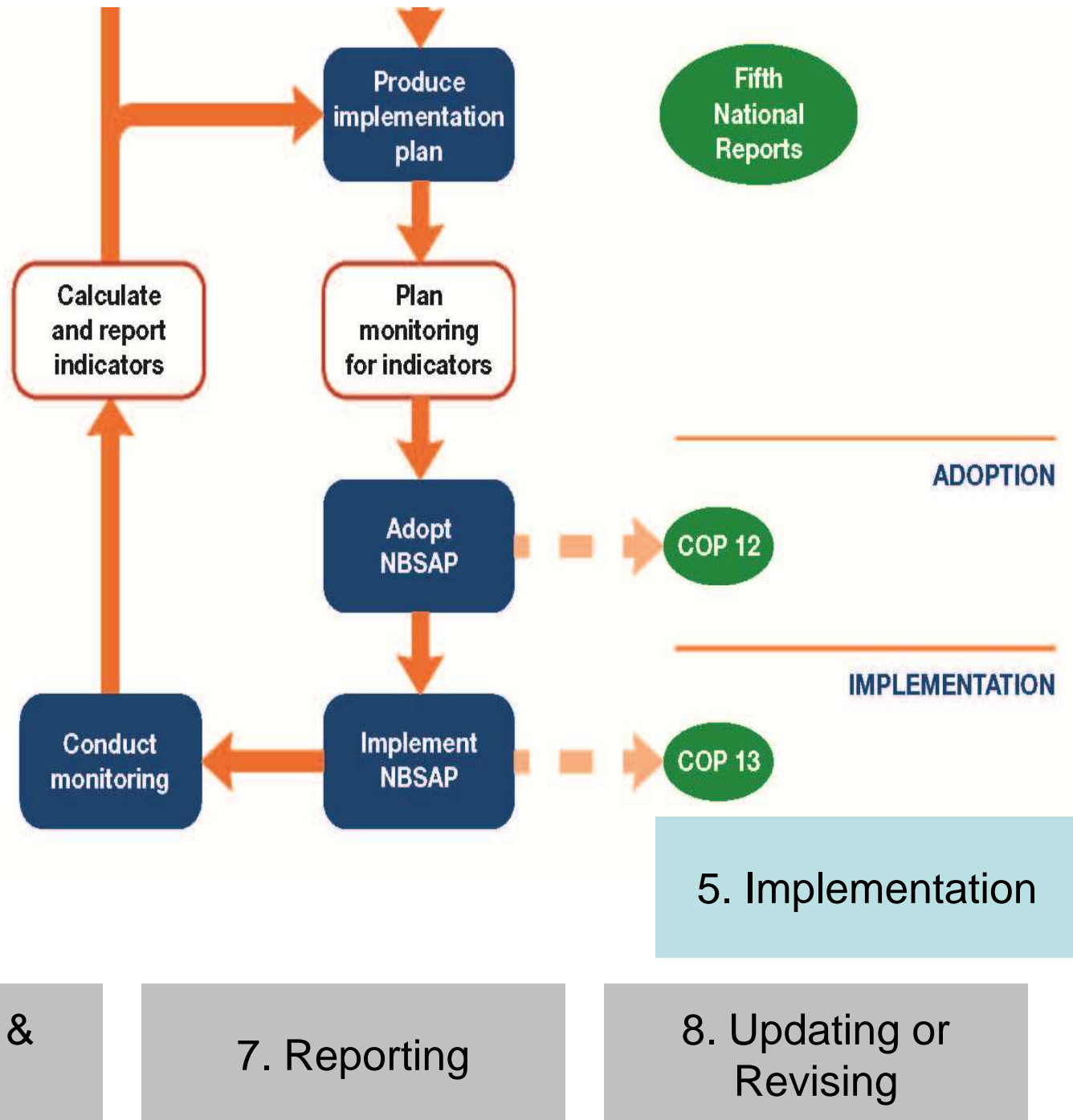
### PREPARATION

1. Getting organized

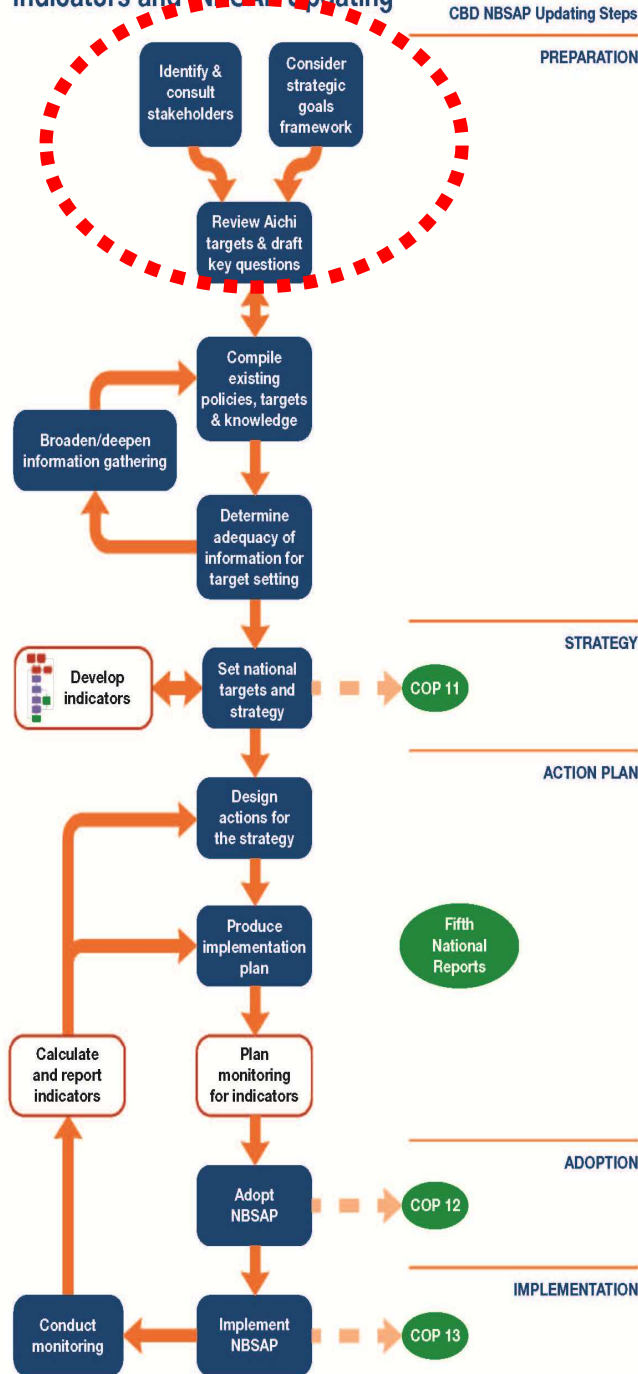
2. Assessment & country study

### STRATEGY









1. Getting organized

2. Assessment & country study



## **Aichi Target 5:**

By 2020, the rate of loss of all natural habitats, including forests, is at least halved and where feasible brought close to zero, and degradation and fragmentation is significantly reduced.

# Consult Stakeholders

...important that the target meets the country's needs and addresses priority concerns



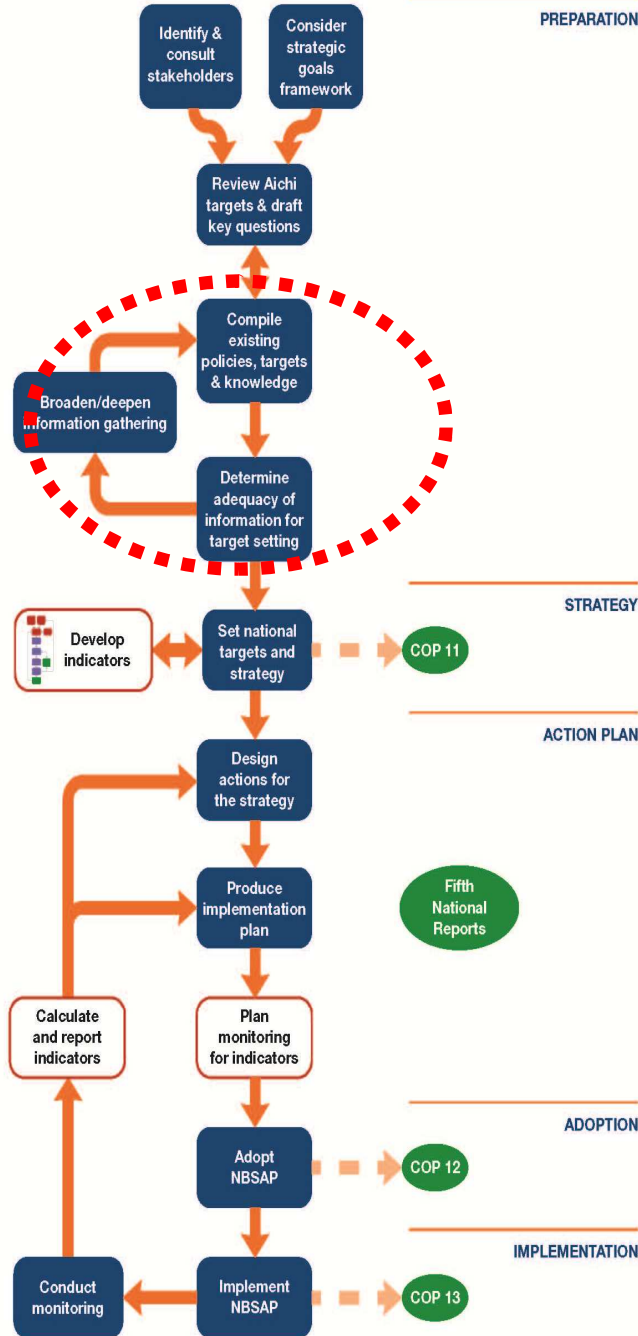
# Define Key Questions

- Identify 3 priority key questions regarding habitat loss and conservation, and setting a national version of Aichi Target 5 that are likely to be important for your Country
  - Note reason/justification
  - Make sure stakeholder comments are taken into account

# Define Key Questions: Lessons

### Indicators and NBSAP Updating

CBD NBSAP Updating Steps



# Target Setting

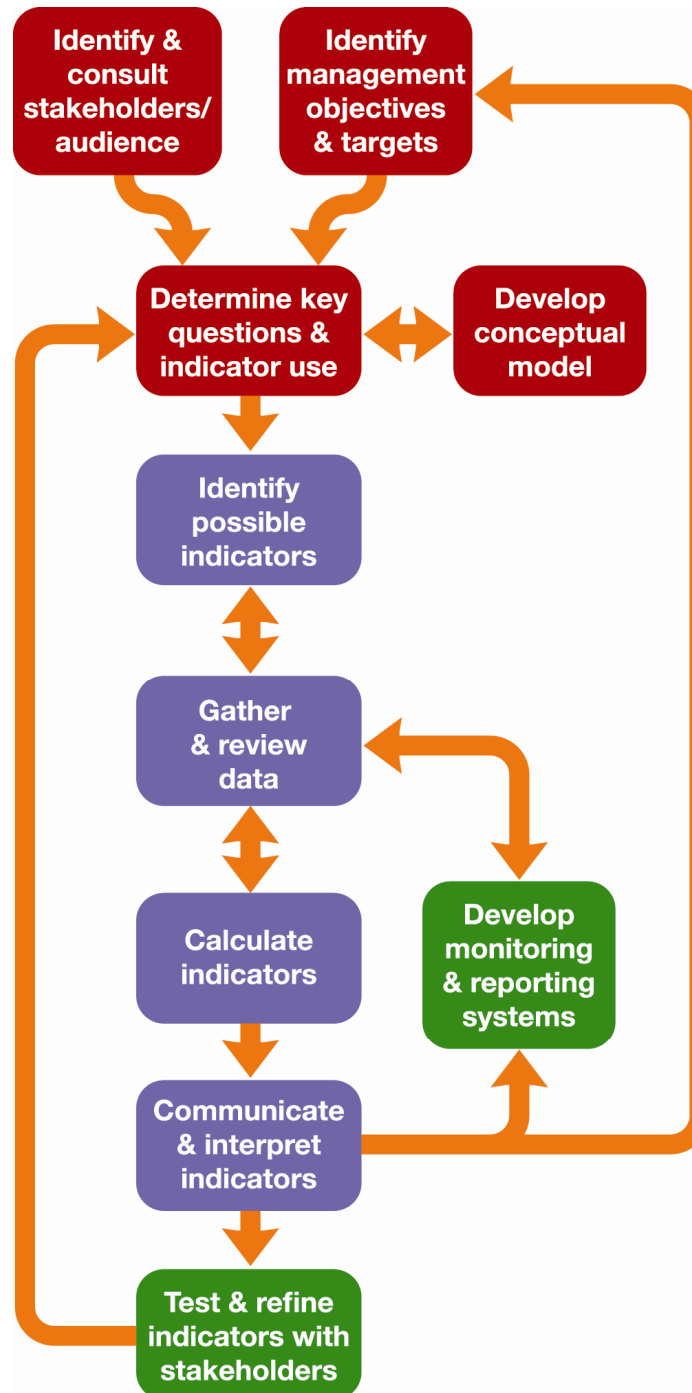
- Choose one key question
- Propose 1-3 potential targets that respond to the key question
  - Use the national information collected by the team (pp.2 & 3) to help with the formulation of the targets
  - Justify why you have selected the targets by relating them to the key question and existing information
  - Choose a different person to report back

**Remember: SMART targets!!**

# Target Setting: Lessons

# The Biodiversity Indicators Development Framework

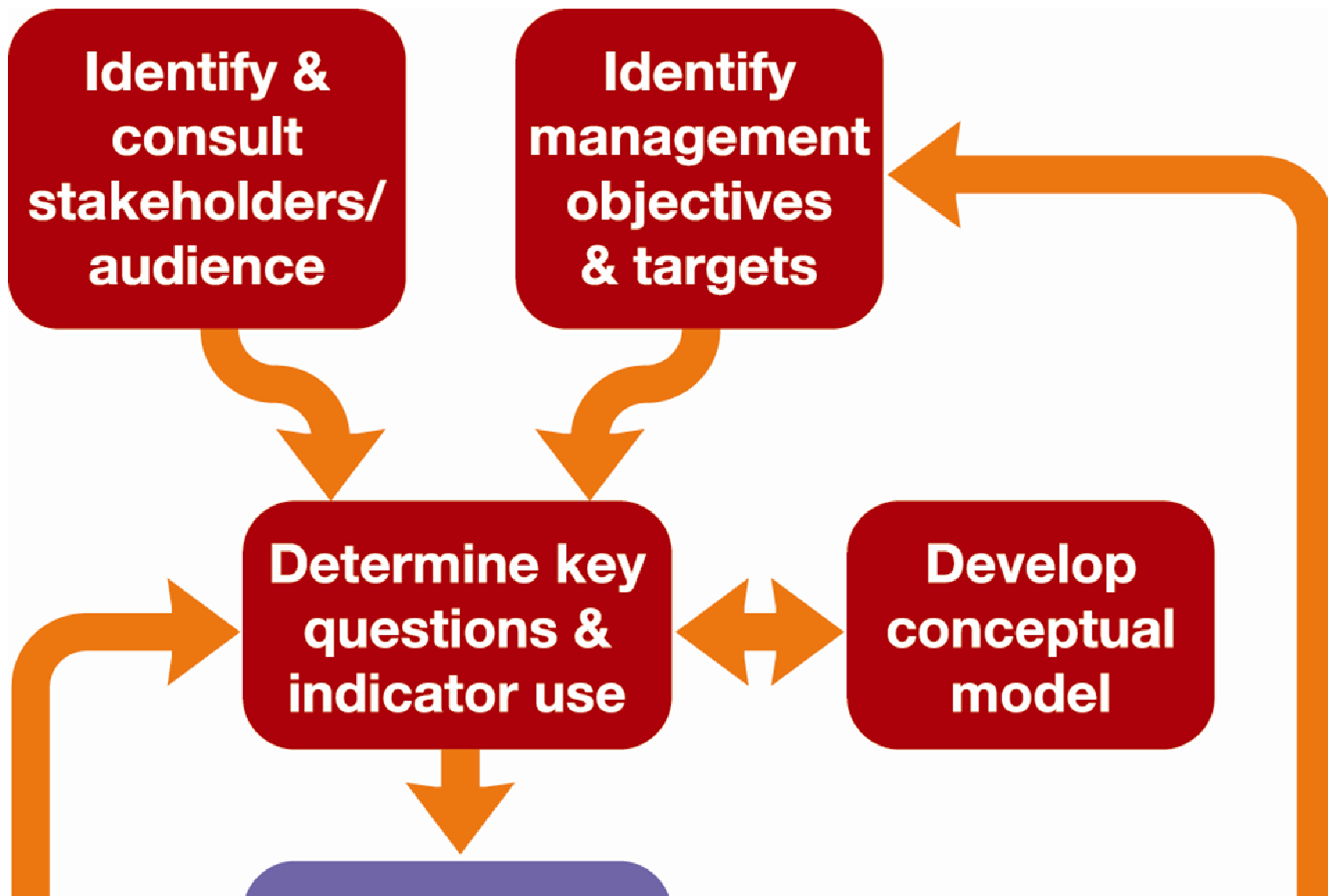
[www.bipnational.net](http://www.bipnational.net)



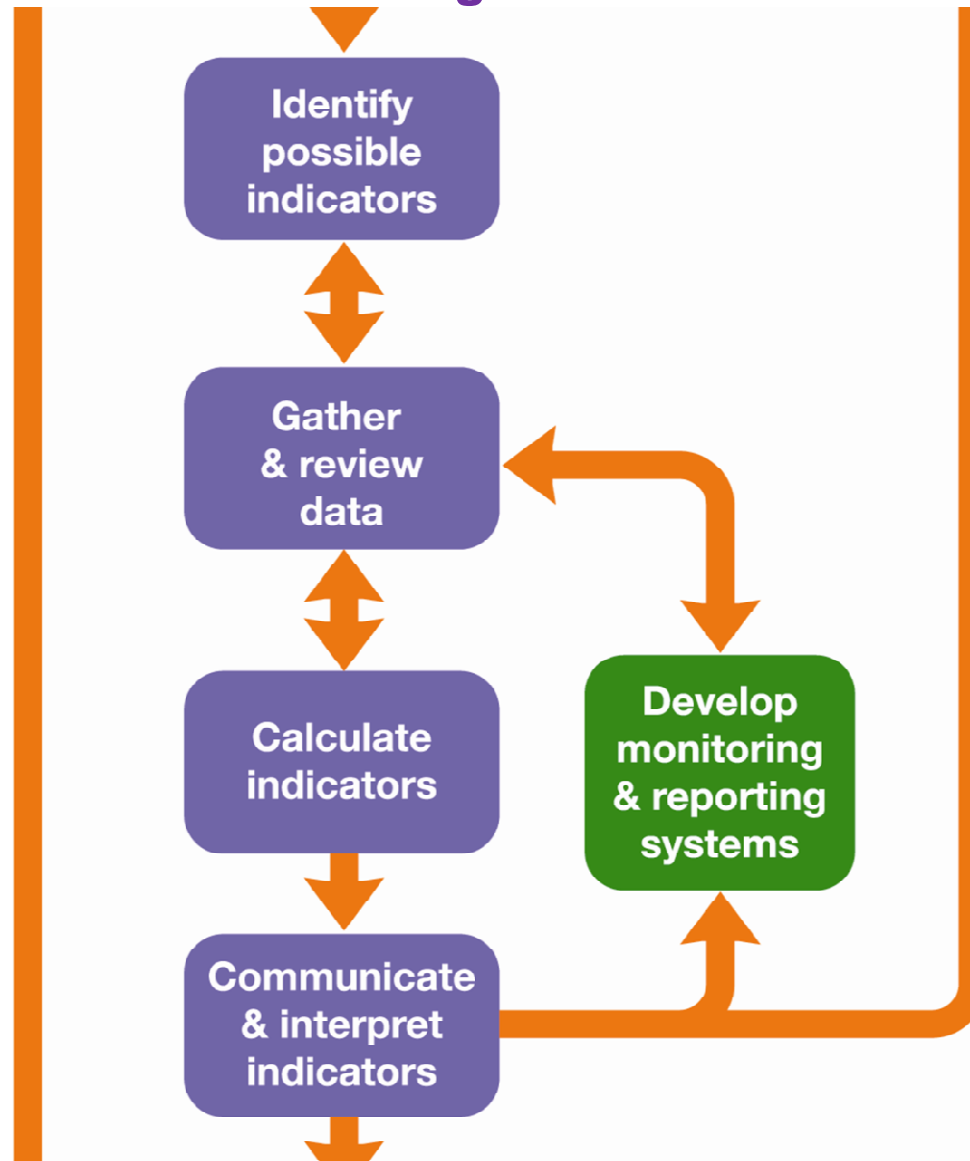


## The Biodiversity Indicators Development Framework

**Purpose – actions needed for selecting successful indicators**

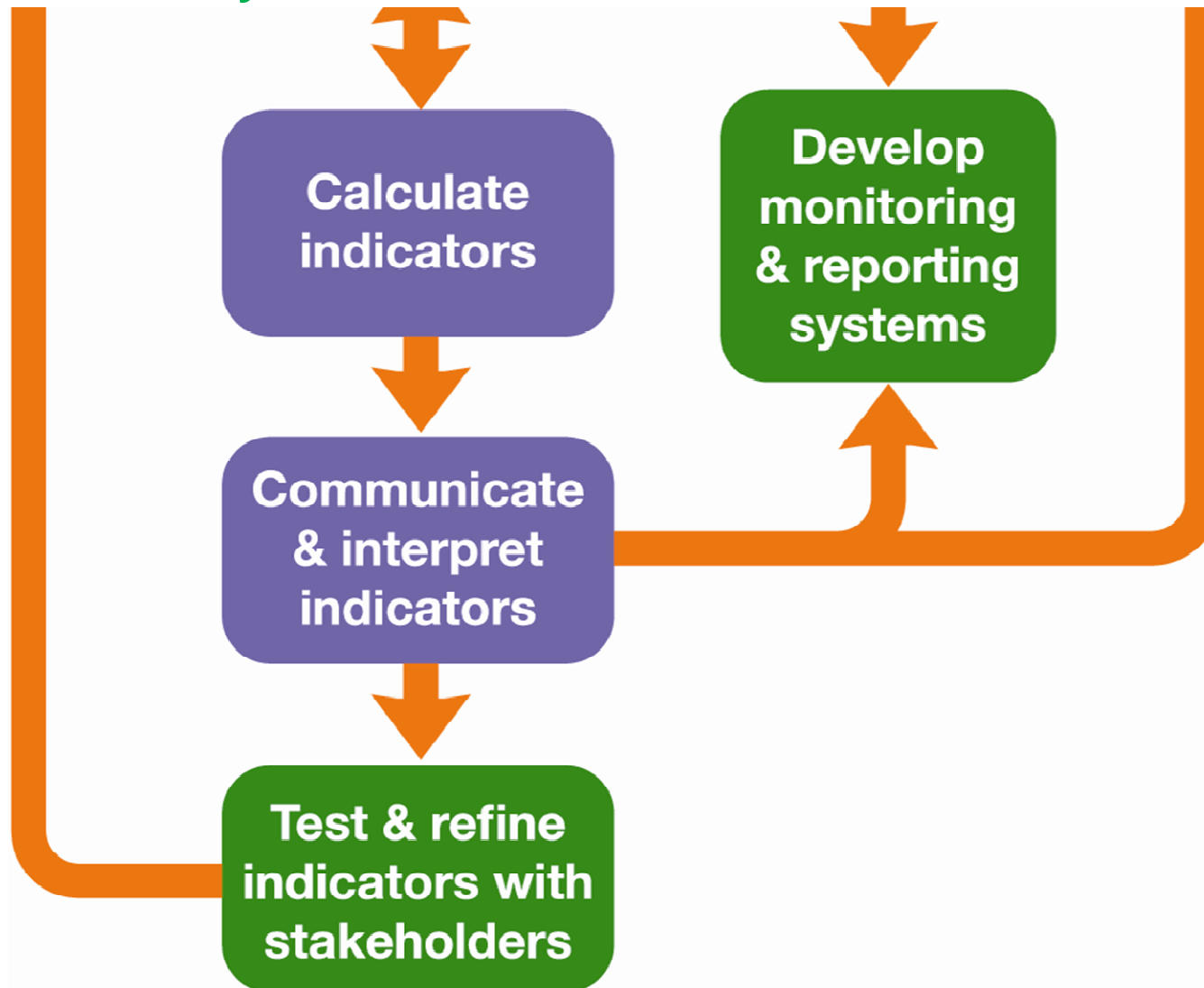


## The Biodiversity Indicators Development Framework Production – essential to generate indicators



## The Biodiversity Indicators Development Framework

### Permanence – mechanisms for ensuring indicator continuity & sustainability



# Group Exercise

- Potential options for presenting the two given indicators (+1 original indicator)
- Audience?
- Link to Key Question and Target?
- Interpretation/message?
- Shortcomings?

# What makes a successful indicator?

## Group Exercise:

Identify a successful indicator from one of the countries

- Reported and used over time
- Ideally from biodiversity but it can be from another sector
- In the production process of the indicator, what made it successful?

# What makes a successful indicator?

## Group Exercise:

A member from a different country in the group reports on:

- Name and description of the indicator
- Why is it a successful indicator?
- What is the key lesson about why this indicator is successful?

# What makes a successful indicator?

- **Scientifically valid** – theory of relationship between the indicator and its purpose (what change in the indicator means) + reliability of the data
- **Based on available data** – over time (monitoring)
- **Responsive to change in the issue of interest**
- **Easily understandable** – conceptually + presentation + interpretation
- **Relevant to user's needs**
- **It is used!** (for measuring progress, early-warning, understanding an issue, awareness-raising, ...)