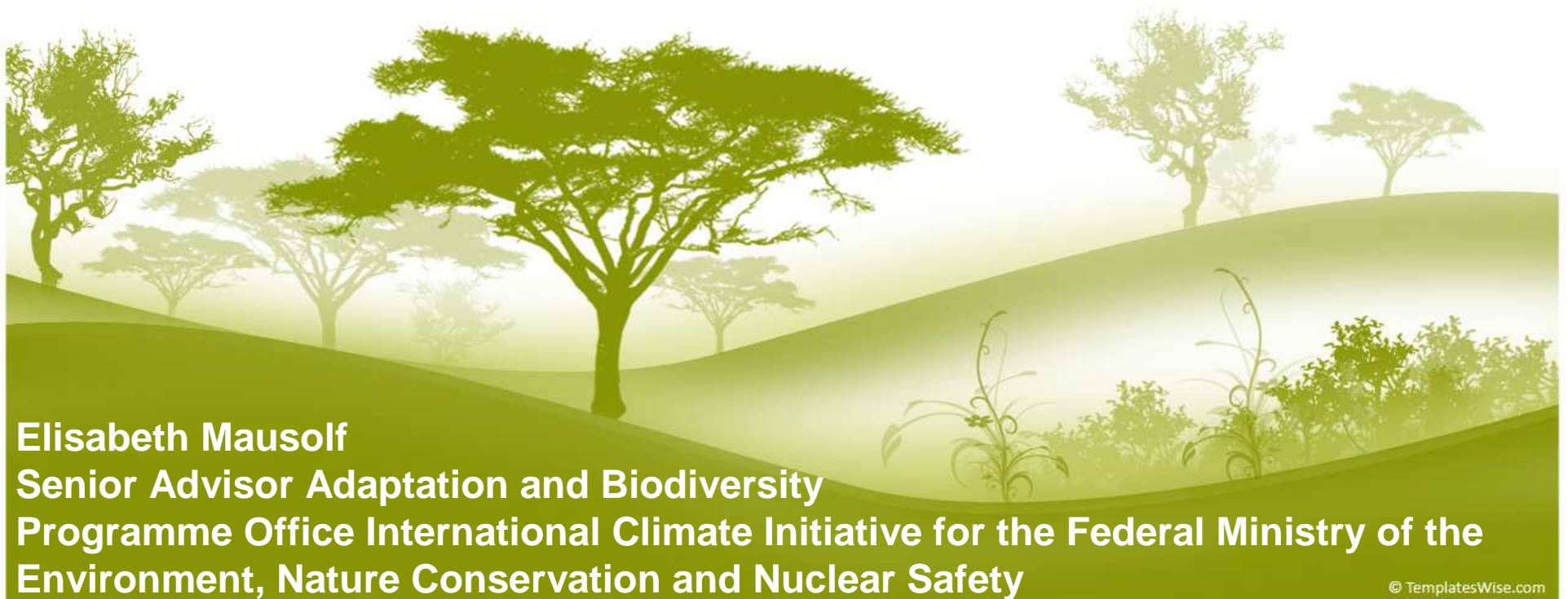




The International Climate Initiative (ICI)

An innovative financing mechanism for global climate protection



Elisabeth Mausolf
Senior Advisor Adaptation and Biodiversity
Programme Office International Climate Initiative for the Federal Ministry of the
Environment, Nature Conservation and Nuclear Safety

Objectives of the International Climate Initiative

- **Contribution towards implementation of the Bali Road Map**
- **Support for partner countries: mitigation and adaptation**
- **Conservation of biodiversity with CO₂ – sink and/or adaptive functions**
- **Exemplary, innovative financing mechanism**

BALI Action Plan

Main elements will be addressed by the ICI, Decision 1/CP.13

- **Finance:** Improved access to **adequate , predictable and sustainable financial resources** and financial and technical support, and the provision of **new and additional resources**, including official and concessional funding for developing Parties
- **Adaptation: Innovative** means of **funding** to assist developing country Parties that are particularly vulnerable to the adverse impacts of cc in meeting the cost of adaptation
- **REDD:** „Policy approaches and positive incentives on issues relating to reducing **emissions from deforestation and forest degradation** in developing countries; and **the role of conservation, sustainable management of forests and enhancement of forest carbon stocks in developing countries**

The Climate Initiative: Auctioning emission certificates for climate protection

- **Auctioning of emission certificates started 2008 (8,8% of the certificate, German companies, industry' payments for emissions)**
- **400 Mio € of the revenues were earmarked in the federal budget to the new Climate Initiative of the BMU**
- **National component: 280 Mio € (support for energy efficient buildings, RE)**
- **International component: 120 Mio €**
- **New and additional funds!**

Thematic priorities of the ICI

- **Conservation and sustainable use of ecosystems that play an important role as CO₂ sinks & proven relevance in relation to human adaptation**
- **Measures for conserving climate-relevant biodiversity**
- **Measures for adaptation to climate change**
- **Reducing Emissions from Deforestation and Degradation (REDD)**
- **Management of natural resources**

ICI wants to support synergies of forest conservation, biodiversity, ecosystem services, cc mitigation and adaptation

LifeWeb Initiative

Clearinghouse

Electronic Marketplace

Platform for Partnership Building

Main Objective:

- support the creation of new and improve management of existing protected areas

Requirements:

Full Implementation of the CBD Programme of Work on PAs

Specific Objectives

- Parties and local and indigenous communities are encouraged to publish protected area proposals along with the respective needs
- Donors (donor countries, development banks, NGOs, private sector, foundations) are provided with a comprehensive overview on specific funding needs and are enabled to better channel and coordinate their support
- Partnerships for the financing of new protected areas

ICI and LifeWeb Initiative – one and the same?

- **No! Two different initiatives but connected**
- **ICI is a bilateral funding mechanism financed through revenues from emission certificates**
- **ICI supports projects that serve to further the global multilateral “LifeWeb Initiative” of the CBD PoWPa (finance concrete projects out of the LWI)**

Basic structure:

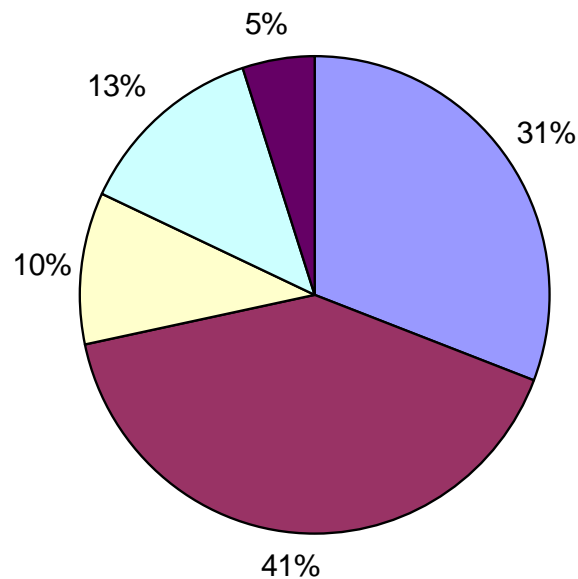
- **Webpage**
- **Coordinator**
- **Meetings**

2008 Projects of the ICI

- An overall of 100 projects have been commissioned in 2008
- Projects in 27 countries and several regions have been supported in 2008
- 12 out of 100 projects are Adaptation to climate change projects
- 16 out of 100 projects are LWI projects
- 4 out of 100 projects are Management of Natural Resources

Thematic allocation of supported projects in 2008

Project Categories



- Adaptation
- LifeWeb Initiative/Climate-relevant Biodiversity/Protected Area Management
- Management of Natural Resources/REDD
- Policy Support
- Marine and Coastal Protection Management

Criteria for project selection

- **Conservation, rehabilitation, sustainable use of climate-relevant biodiversity (carbon sinks, proven relevance in relation to human adaptation, hot spots of biodiversity/hot spots of carbon sequestration, reasonable CO₂ monitoring)**
- **Adaptation to climate change**
- **Innovative, exemplary character of projects**
- **Multiplier effect (leveraging additional resources)**
- **Support by the partners (ownership)**
- **Direct and economically efficient mitigation effect**
- **ODA eligibility**

Further Funding Process

- information on the funding process available on the website of the BMU:

www.bmu.de/klimaschutzinitiative

- including the requirements for funding
- Including forms for the application process

Thank you for your attention!

For more information:

www.bmu.de/klimaschutzinitiative

programmbuero@programmbuero-klima.de

Elisabeth.Mausolf@programmbuero-klima.de