

A future task in good hands



Convention on
Biological Diversity

Welcome to Vilm Island

Regional Workshop for Europe on Updating National Biodiversity Strategies and Action Plans

15– 19 April 2011
organised by

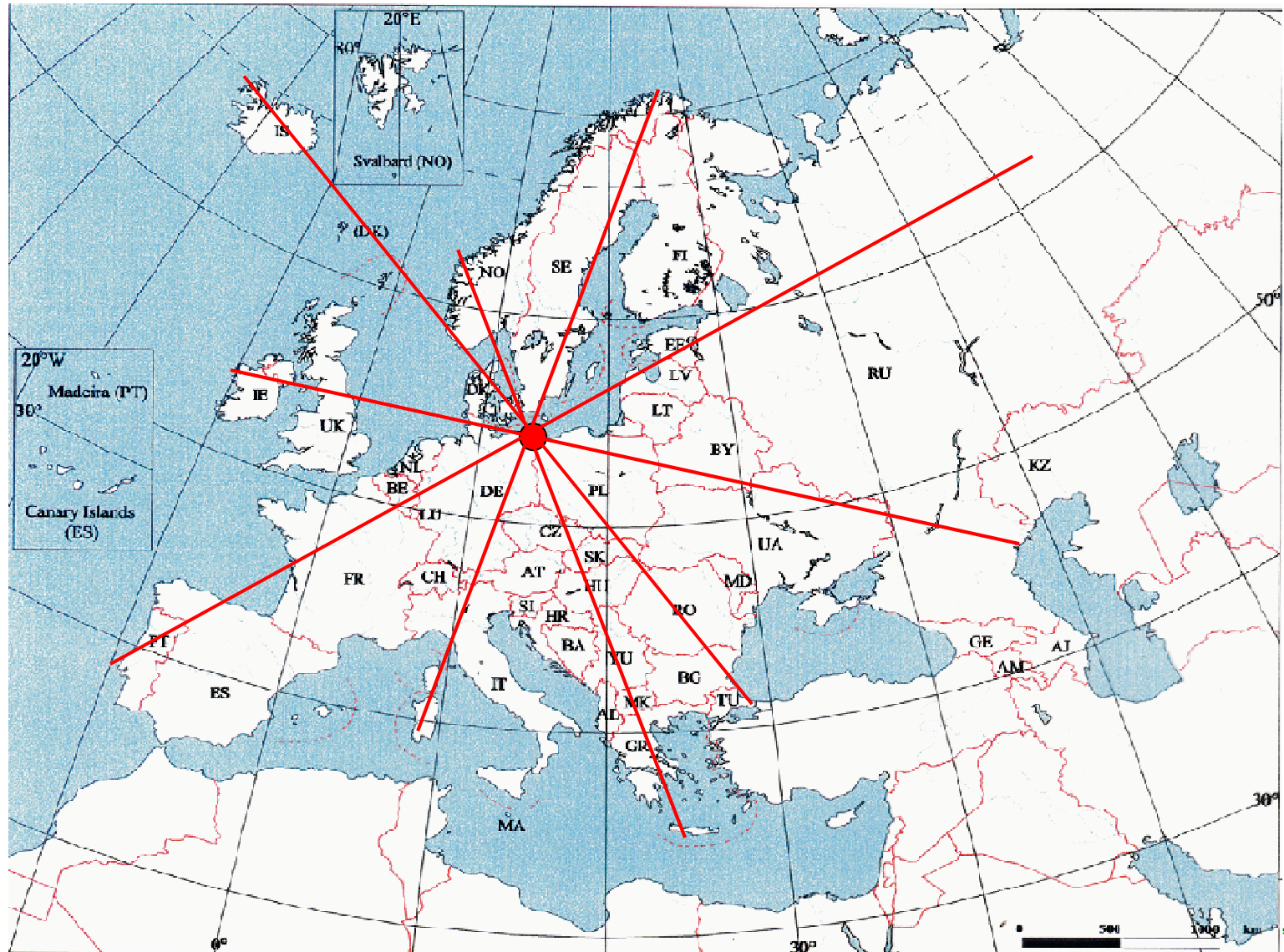
the CBD-Secretariat and the German Federal Agency for Nature Conservation
at the
International Academy for Nature Conservation Isle of Vilm



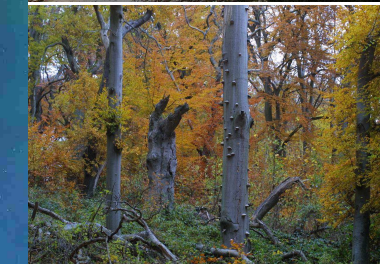
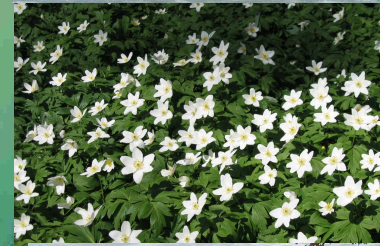
Tonight

- Introduction to Vilm
- Technical matters

Isle of Vilm - Location in Europe



One of the smallest German islands
but
the most beautiful

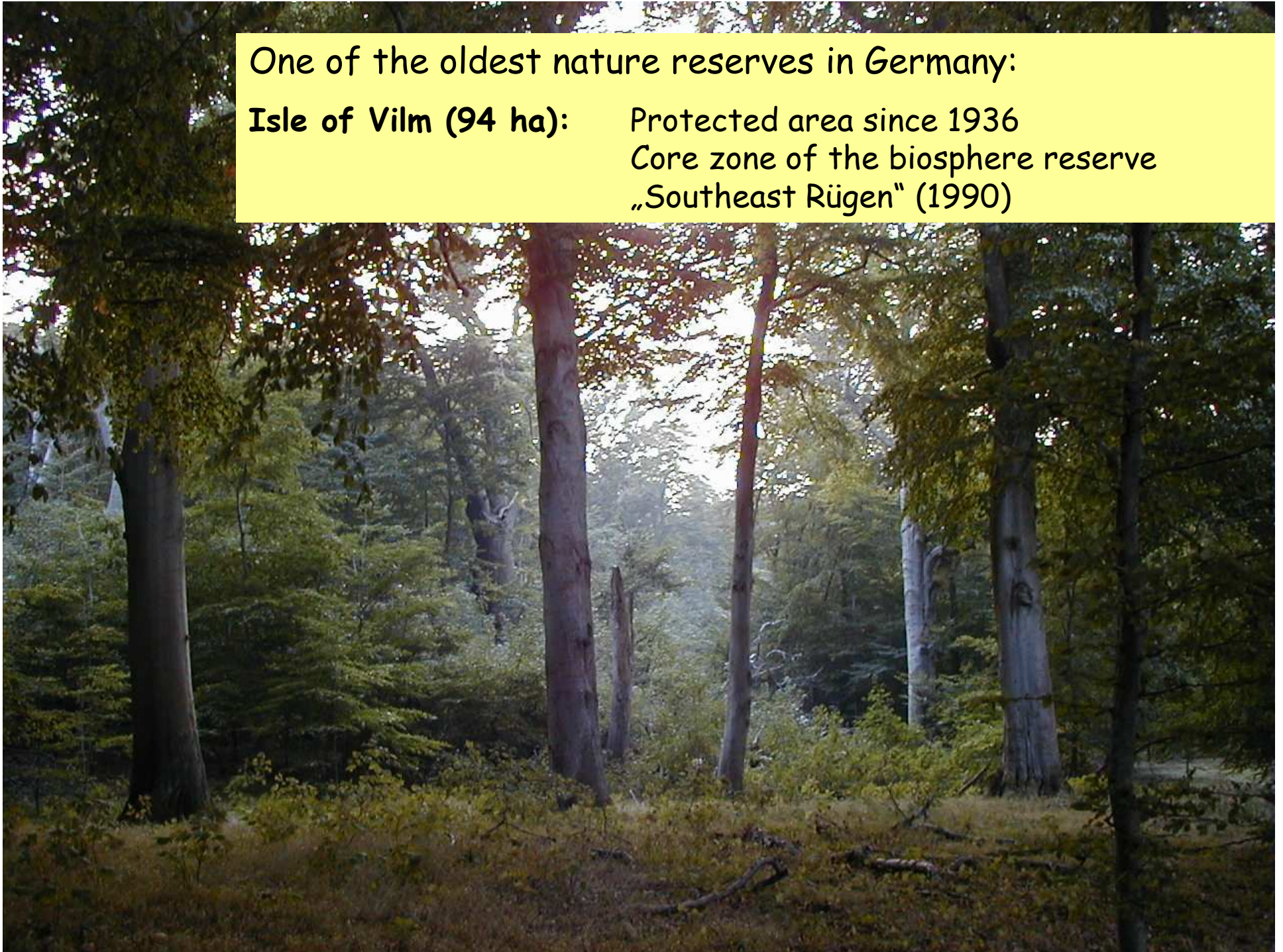




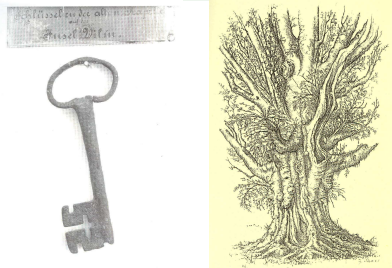
Last "primeval" forest of Germany

One of the oldest nature reserves in Germany:

Isle of Vilm (94 ha): Protected area since 1936
Core zone of the biosphere reserve
„Southeast Rügen“ (1990)

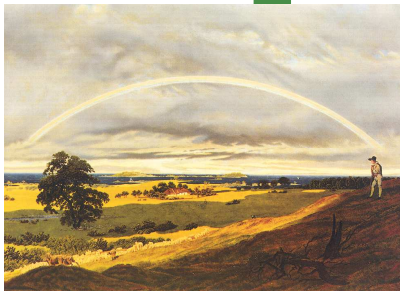


Vilm - An island with a special history



**Site of a chapel in the middle ages (from
1336)**

(Key of the chapel, twelve apostle oak tree)



Artists' colony in 19th/20th century



**Nature lovers' destination
(hotel constructed in 1886)**

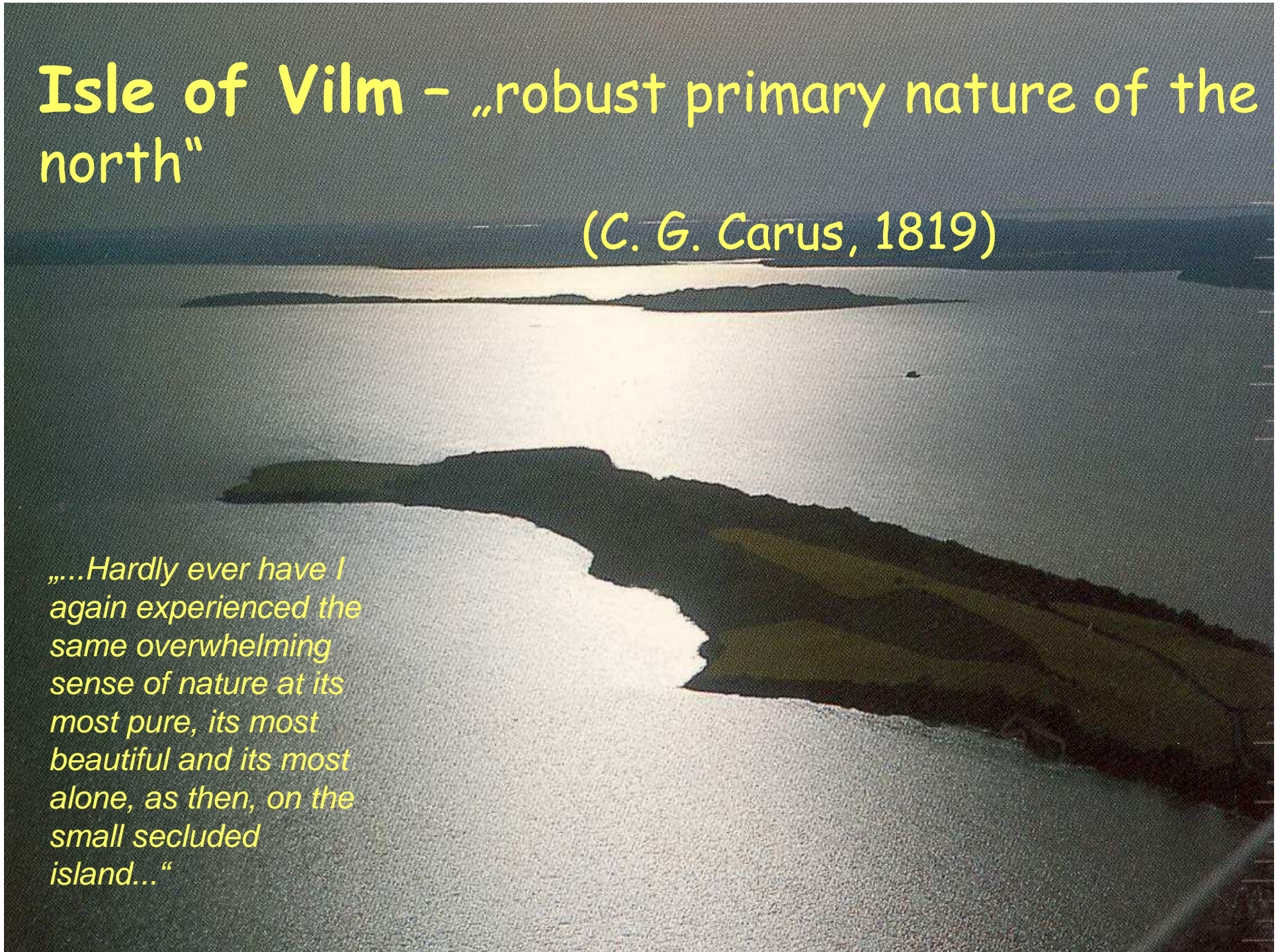


**Holiday resort of the GDR-Council of
Ministers (1960-1990)**

Isle of Vilm - „robust primary nature of the north“

(C. G. Carus, 1819)

„...Hardly ever have I again experienced the same overwhelming sense of nature at its most pure, its most beautiful and its most alone, as then, on the small secluded island...“





INA Isle of Vilm - Insel Vilm INTERNATIONAL ACADEMY FOR NATURE CONSERVATION

Outcome of the reunification
1990

6 October 1990 –
The Federal Minister
for the Environment,
Prof. Klaus Töpfer
inaugurates the
International Academy
for Nature Conservation
Isle of Vilm



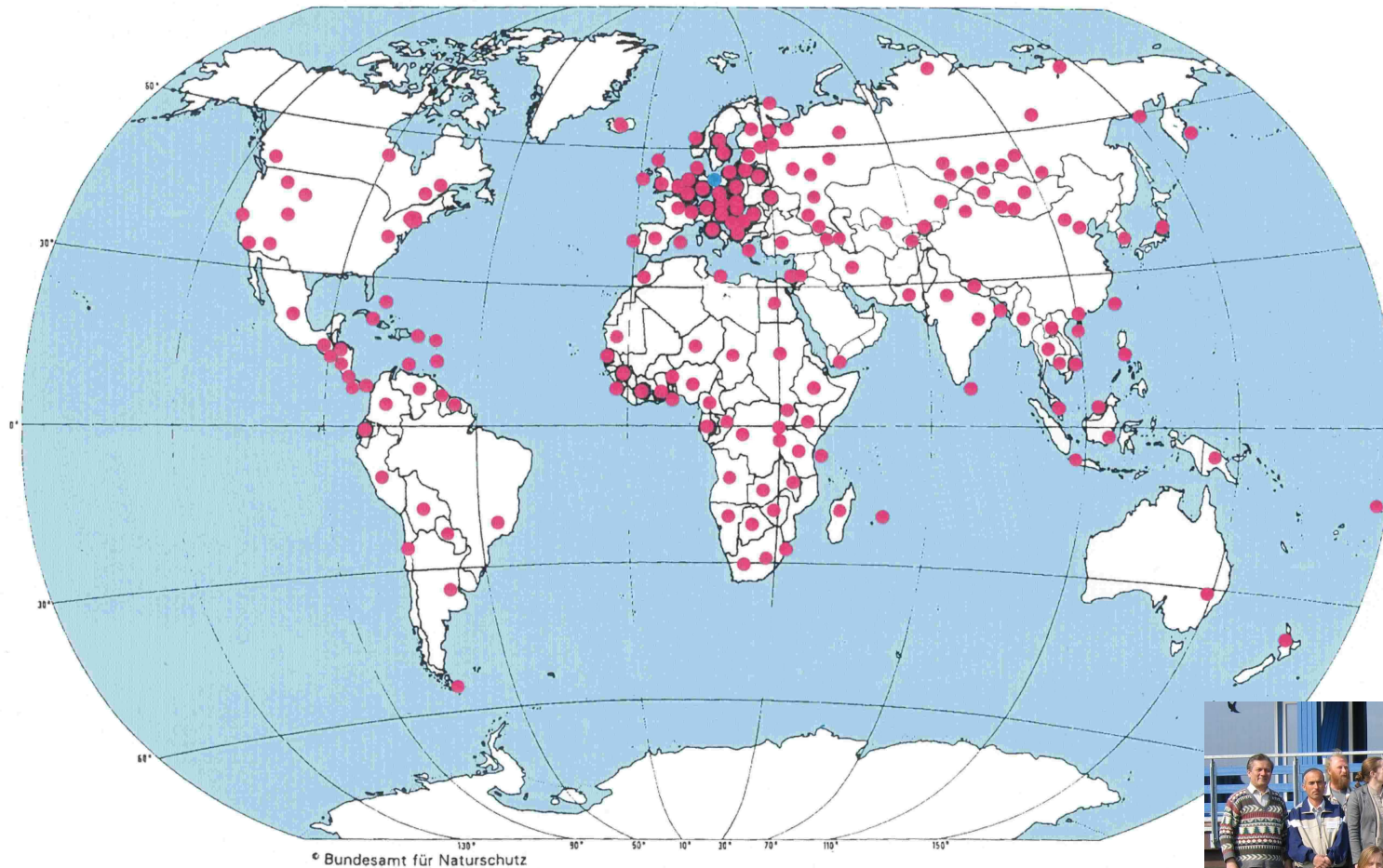
About 80 workshops a year

INA Isle of Vilm - International Activities:

- ▶ Advancement of international conventions and regulations (CBD, World Heritage, Marine Conservation)
- ▶ Training and advisory services in the implementation of international conventions
- ▶ Capacity building for mainly Eastern Europe and the CIS on further conservation issues
- ▶ Promoting nature conservation issues in the work of the German development cooperation



INA Isle of Vilm - participants from all over the world



INA Isle of Vilm - national forum for conservation

- basic strategic, political and societal questions of nature conservation
- conservation concepts and instruments
- nation wide exchange of experiences



Two more departments on Vilm:

- Department of biodiversity
- Department of marine and coastal nature conservation

All in all 60 members of staff on Vilm island

Head office in Bonn

Environmental management on Vilm



Energy saving by
insulation

Organic food

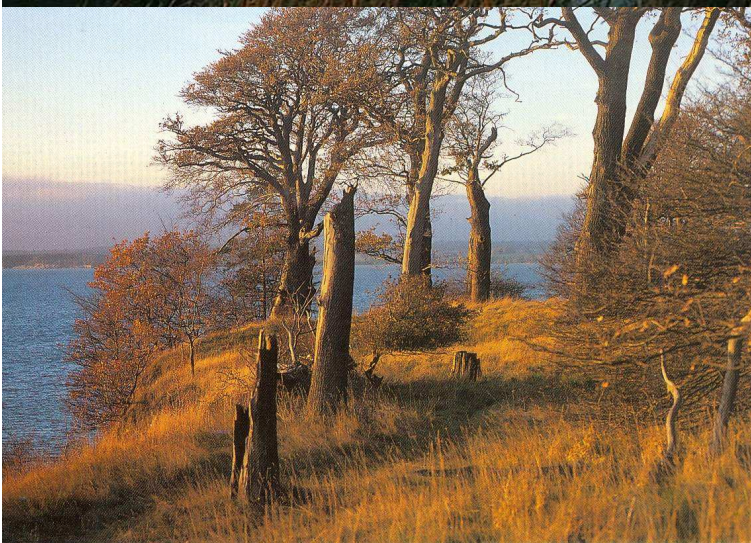


Solar panels for generating electricity:

Since December 2002

electricity produced
CO₂ avoided



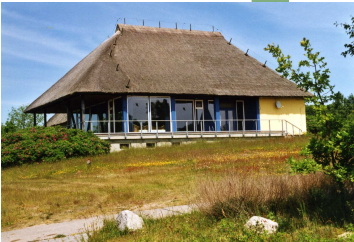








Insel Vilm
INTERNATIONAL ACADEMY
FOR NATURE CONSERVATION



Technical announcements



Mealtimes

- 7.30 - 9.00 Breakfast
- 12.30 Lunch
- 18.30 Dinner

• Please be on time!!!



Conference facilities

- 3 computers with Internet access
- W-Lan in the conference building
- All houses equipped with internet access (please make sure that in your network configurations the IP address is set on **AUTOMATIC**)
- 1 printer
- 1 photocopier
- CD player
- TV station
- for fax, please consult reception



Strict Non-Smoking Policy!!!



Smoke alarm in each house
Night guard: phone 91

Payments

Reception:

- Phone calls
- Bill for board and lodging (EC card or credit card)
- Postcards...

Service ladies:

- Refreshments, etc.
- Shampoo, toothbrush etc.
- Ironing and laundry service



Reimbursement & Field trip

Please return envelopes to Ralf or myself by Friday 8.30 a.m.

Field trip on Monday 18 April:

- Ferries leave at 8.55 and 9.20
- Packed lunch will be provided
- Introduction will be given the evening before

Special events

- Reception on Friday night
- Guided tour of Vilm on Saturday
- Cultural event (Potlach) on Saturday night
- Field trip on Monday
- Farewell party on Tuesday night

For those staying in a hotel in Lauterbach

Every night: ferries at 20.10 and 21.30

Every morning: ferry at 8.10

Please, eat breakfast in the hotel (7.00)

Thank you for bearing with this
inconvenience!

Enjoy your stay at the Isle of Vilm !

