

# *Satoyama Initiative*

*- A component of NBSAPs -*



Societies in harmony with nature



© Terroirs et Cultures International

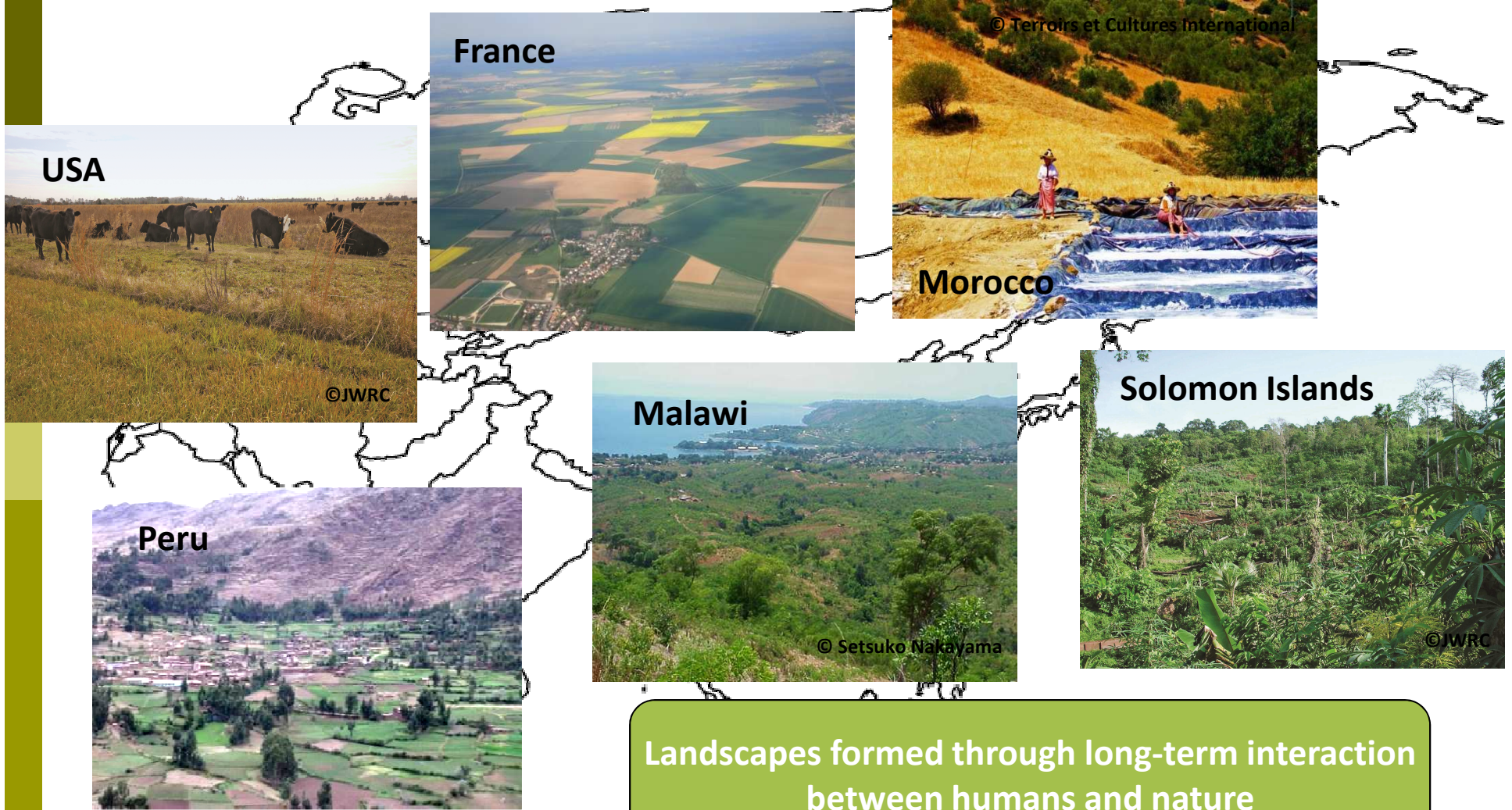
Aya Takatsuki, Ayumi Takahashi

Secretariat of the International Partnership for the *Satoyama* Initiative (IPSI)

United Nations University Institute of Advanced Studies (UNU-IAS)

*11-15 December 2011, Minsk, Belarus*

# Socio-ecological Production Landscapes (SEPLs) around the World..



Landscapes formed through long-term interaction between humans and nature

# SEPLs are beneficial

## □ Benefits

- Human well-being / livelihoods
- Poverty alleviation / MDGs
- Climate change mitigation and adaptation
- Achievement of biodiversity targets



## ... but SEPLs are threatened

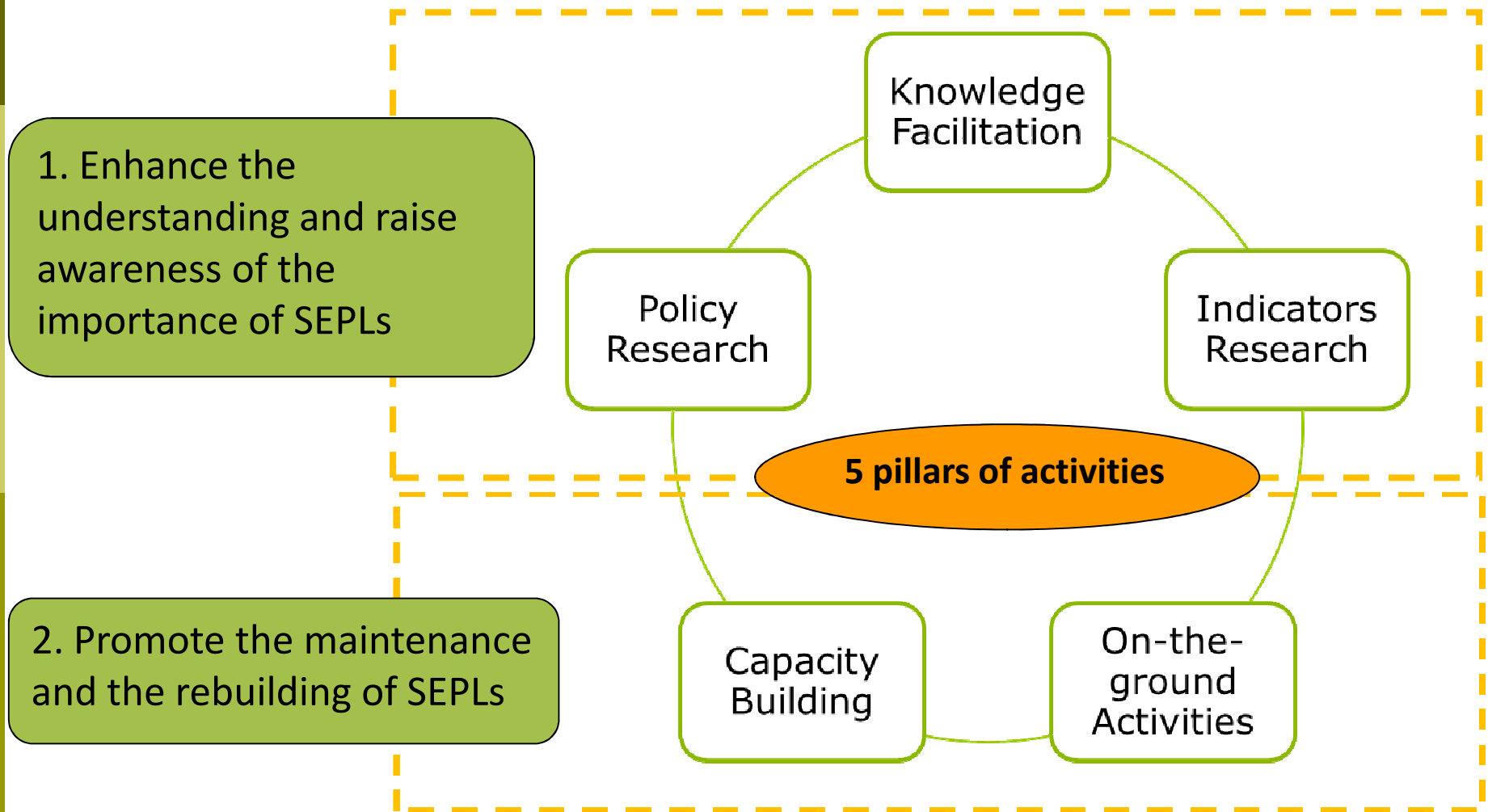
---

### □ Threats

- Abandoned (rural depopulation, aging population etc.)
- Degraded (Population growth, overexploitation etc.)
- Lost (Unplanned urbanisation, industrialisation, natural disasters etc.)

***What can we do?***

# Satoyama Initiative, concept



# *Satoyama* Initiative, concept

---

**Vision:**  
Societies in harmony  
with nature

Contribution to both  
**biodiversity and human  
well-being** in line with the  
**three objectives of the CBD**

## Approach:

1. Consolidate wisdom on securing diverse ecosystem services and values
2. Integrate traditional knowledge and modern science
3. Explore new forms of co-management systems

# CBD COP-10 recognised the *Satoyama* Initiative as..

*“useful tool to better understand and support human-influenced natural environments for the benefit of biodiversity and human well-being”*

(CBD COP10 Decision X/32)



## The *Satoyama* Initiative can contribute to the implementation of the Strategic Plan and the Aichi Biodiversity Targets

---

- Strategic Plan for Biodiversity 2011-2020 and the Aichi Biodiversity Targets
  - ✓ Share its vision of “***Living in harmony with nature***”, and
  - ✓ Strategic goal D “*Enhance the benefits to all from biodiversity and ecosystem services*”, especially
  - ✓ Target 14: “*By 2020, ecosystems that provide essential services, including services related to water, and contribute to health, livelihoods and well-being, are restored and safeguarded, taking into account the needs of women, indigenous and local communities, and the poor and vulnerable.*”





# International Partnership for the *Satoyama* Initiative (IPSI)

- Platform for securing synergies, maximizing resources, mutual strengthening of activities under the *Satoyama* Initiative



# IPSI activities, Collaborative, event etc

- ❑ Platform for local, national, regional and global actions
- ❑ 15 Activities are now collaboratively develop among members.



SATOYAMA  
INITIATIVE



FAQ

HOME

ABOUT

ACTIVITIES/EVENTS

CASE STUDIES

PARTNERSHIP

VIDEO/RESOURCES



Events

Collaborative  
Activities (CA)

## Event

The Initiative has held international conferences, meetings and other events to discuss its concept and the issues facing socio-ecological production landscapes around the world. Please check this page for up-coming and past events.

## IPSI Collaborative Activities

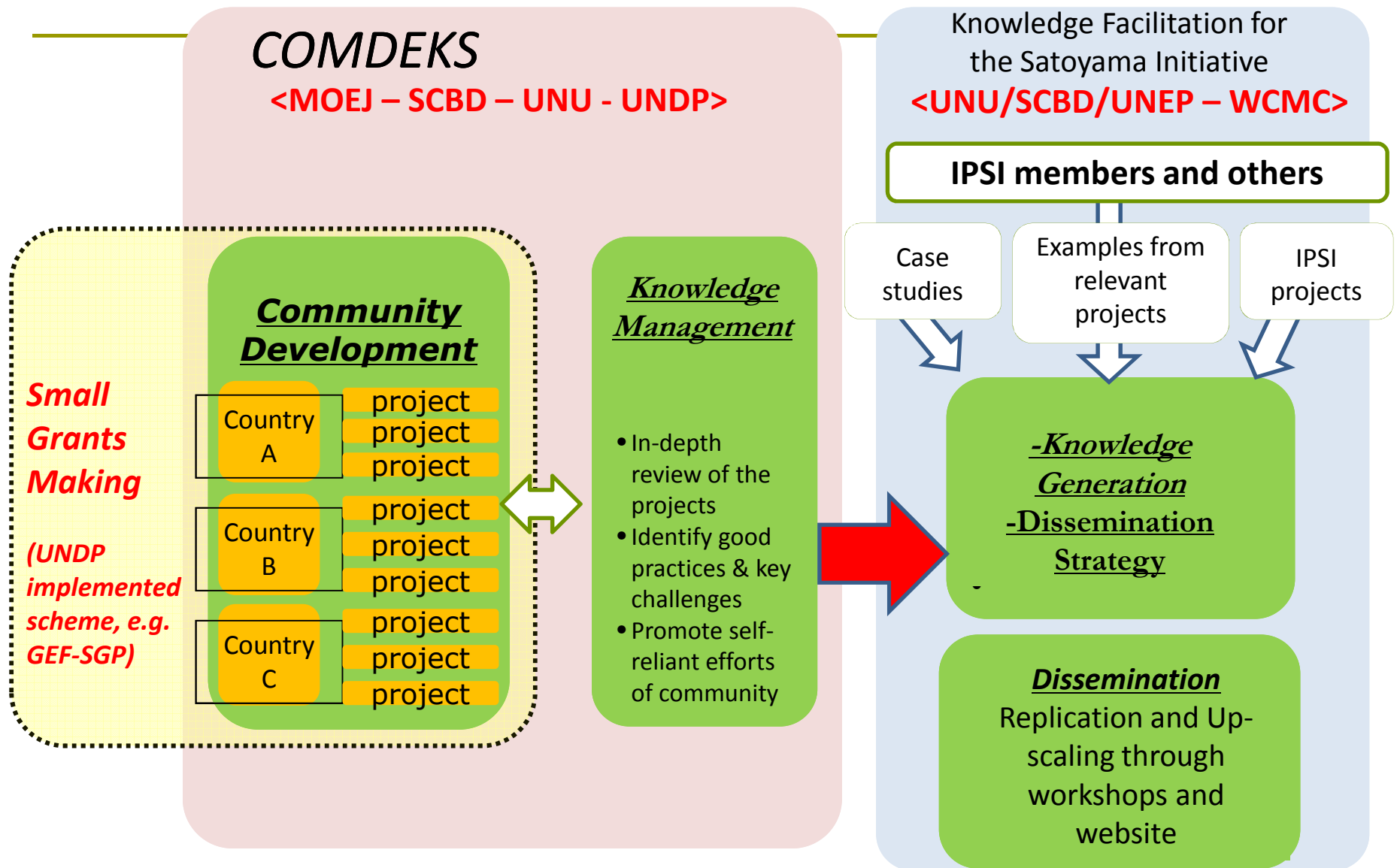
The International Partnership for the *Satoyama* Initiative (IPSI) aims to carry out activities under the *Satoyama* Initiative concept for the benefit of biodiversity and human well-being.

# IPSI activities, e.g.) COMDEKS (UNDP, SCBD, MOEJ, UNU through GEF-SGP)

---

- **C**ommunity **D**evelopment and **K**nowledge Management for the **S**atoyama Initiative (COMDEKS)
- 10 target countries: Brazil, Cambodia, Ethiopia, Ghana, Fiji, India, Malawi, Nepal, Slovakia and Turkey (Grenada will join as 11th country when a in-country small grants scheme is established)
- Each country will receive US\$ 127,272 for grant-making (July 2011-June 2012); UNDP mobilizes the same amount as co-financing; the size of community grant will be \$20,000 – 50,000
- Local community-based organizations (landscape level) are eligible to apply for small grants
- Case studies to be developed for KM and learning
- Programme has 5 year-scope

# IPSI activities, e.g.) COMDEKS, how it works



# Other IPSI activities

## Case Study database: Knowledge Sharing

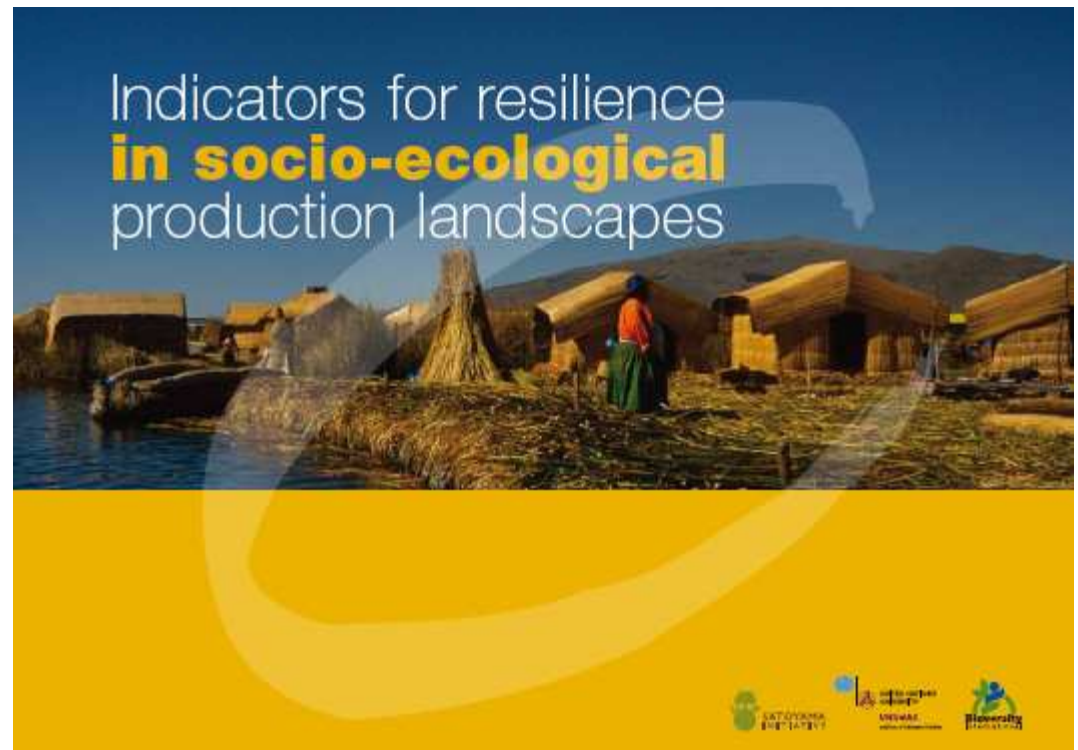


# Other IPSI activities

---

- ❑ Indicators of resilience in socio-ecological production landscapes
- ❑ Great East Japan Earthquake Rebuilding Symposium
- ❑ SBSTTA15 side event

“Challenges and Hopes  
in Ecosystem  
Restoration”



# The *Satoyama* Initiative can be taken into consideration in NBSAPs

---

- ❑ A useful tool to address biodiversity and development issues in a holistic manner
- ❑ Working in line with the three objectives of the CBD, as well as the Strategic Plan and its Aichi Biodiversity Targets
- ❑ Global and multi-sectoral partnership
  - Mainstreaming biodiversity



*Thank you very much !*



<http://satoyama-initiative.org/en/>  
[isi@ias.unu.edu](mailto:isi@ias.unu.edu)