

The background is a solid green color with a faint, stylized pattern of overlapping leaves and branches in a slightly darker shade of green. The text is centered and has a white outline.

Trinidad & Tobago NBSAP 2001

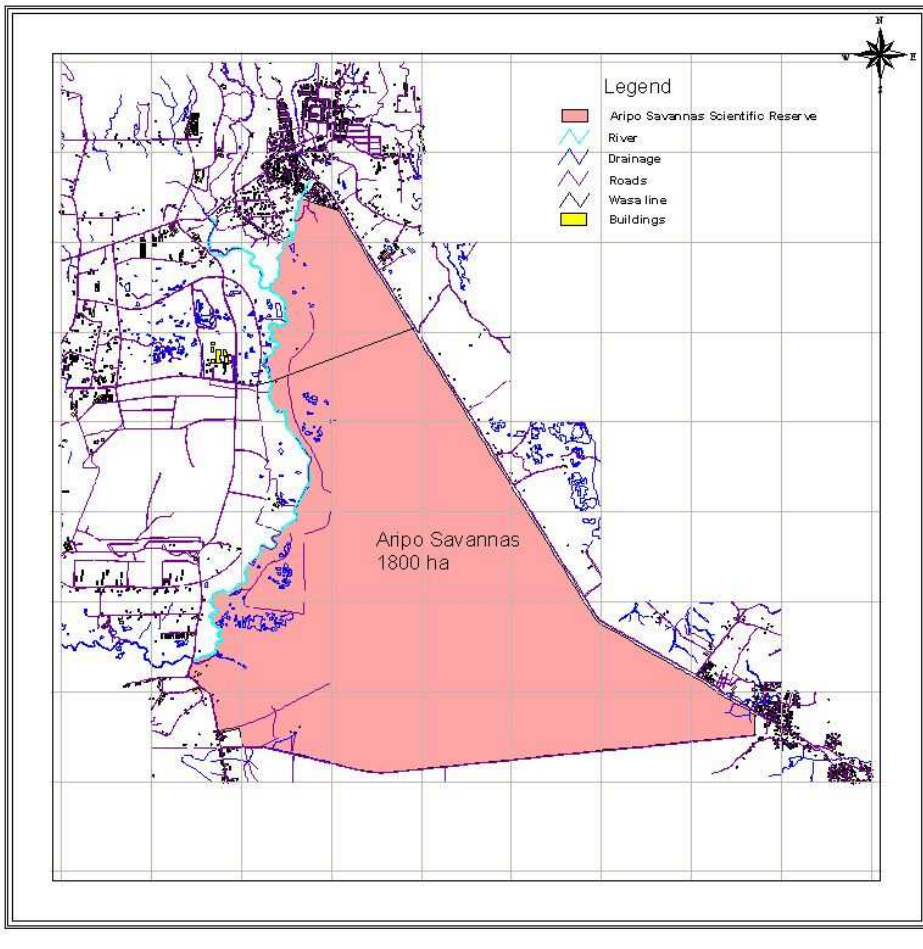
Implementation through participation

NBSAP cross-cutting issues

- **Education and Awareness**
- **Policy and Commitment**
- **Legislation and Enforcement**
- **Information and Research**
- **Institutional Capacity**
- **Participation and coordination**

Process of designation

Aripo Savannas Scientific Reserve

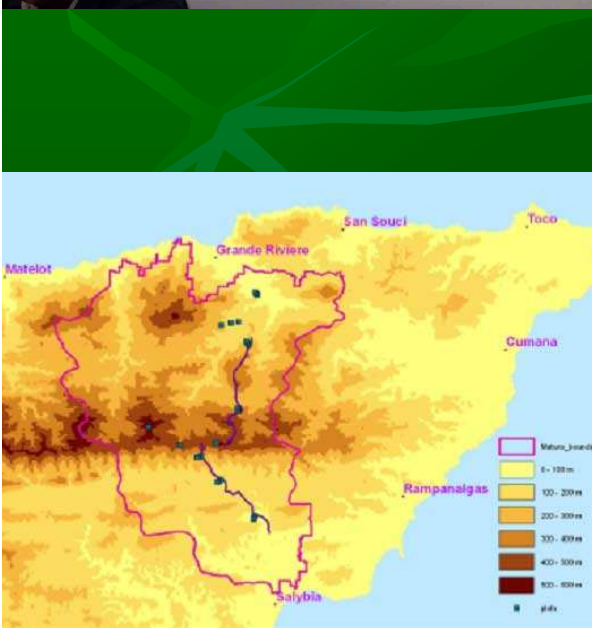
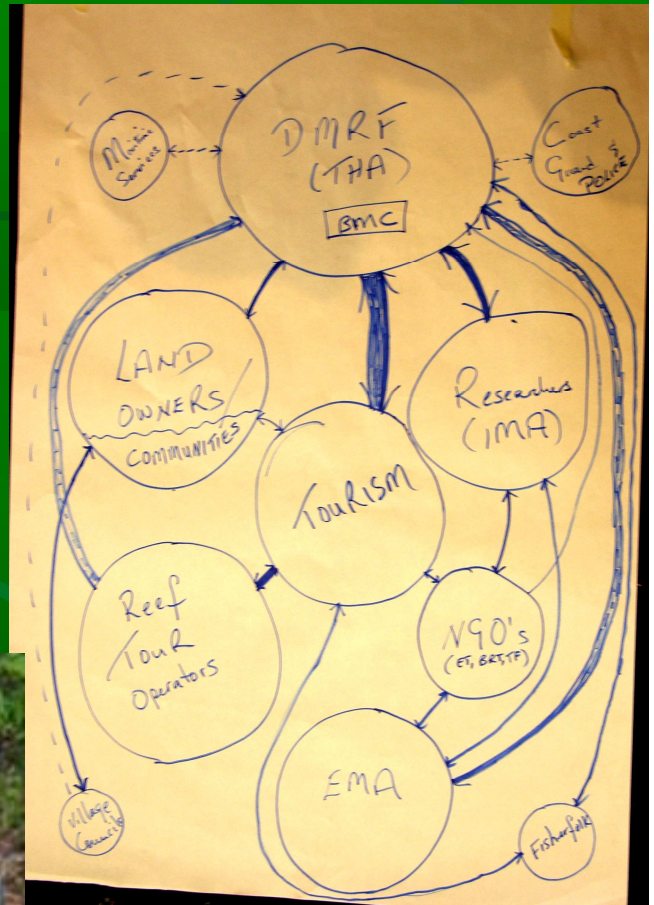
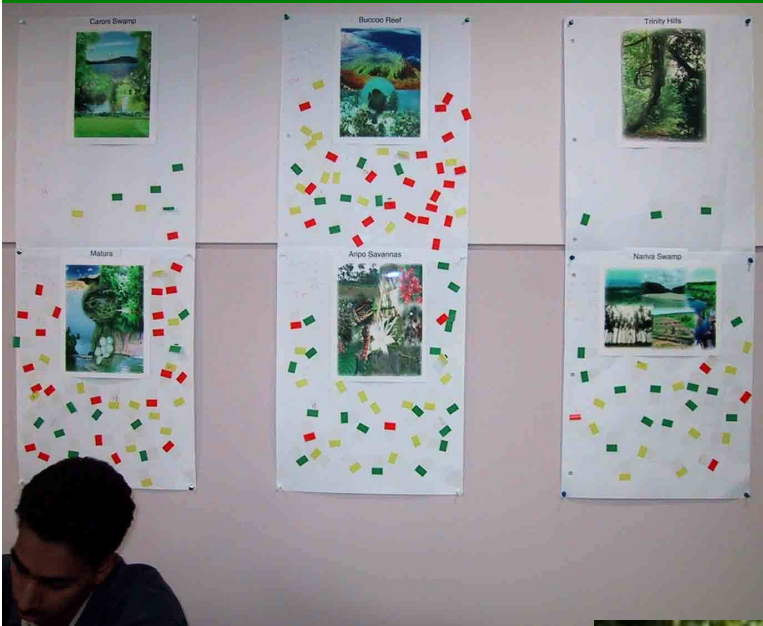


- Ministerial & public comment period



Biodiversity Participatory processes

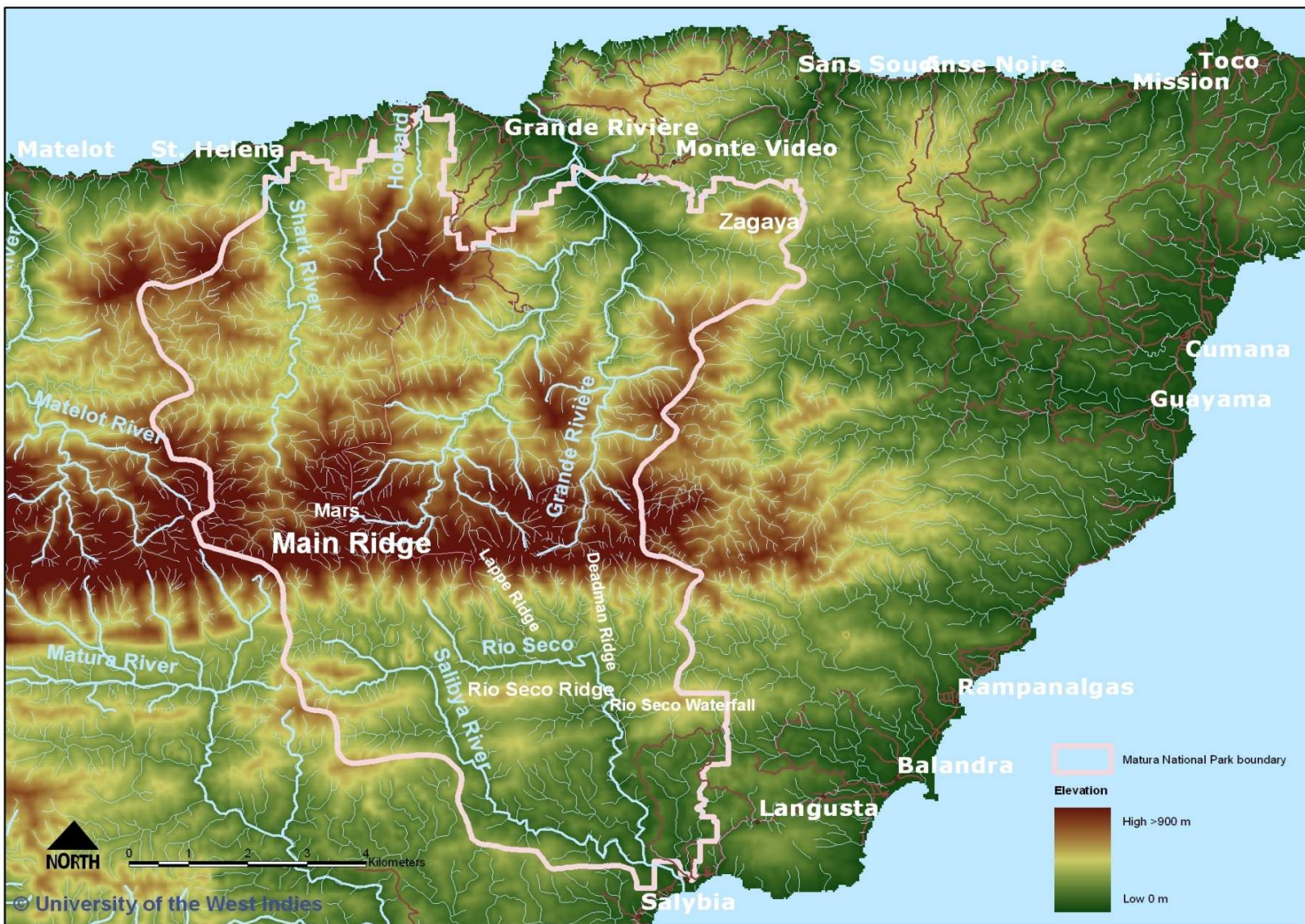
- Consultations
- Capacity building
- Research
- Mgt. Planning
- Education



Participatory processes

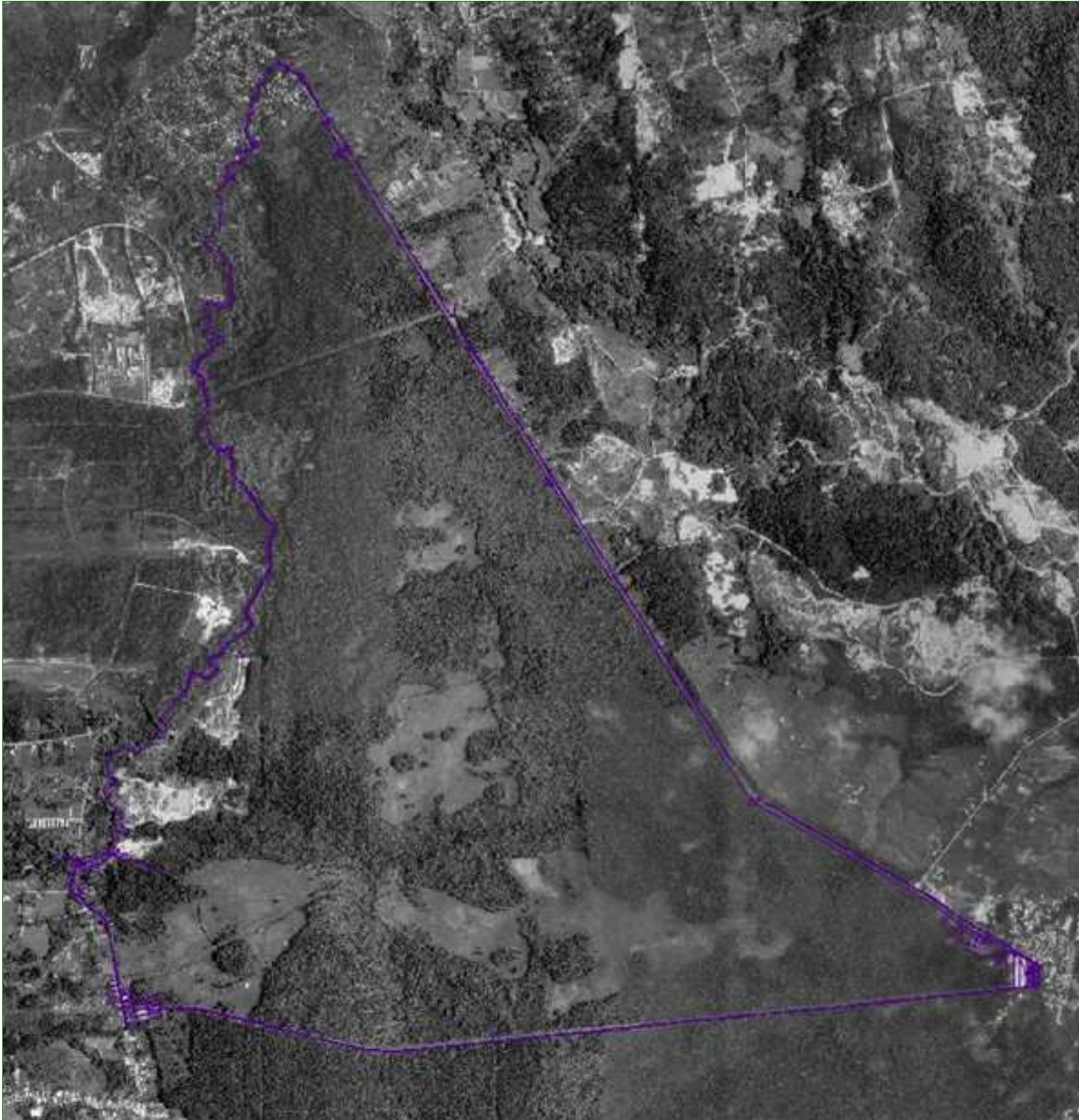
- Designation of protected areas and species
- Participatory research in Matura
- Stakeholder Mgt. Committees (SMCs)
- Mgt. Planning for Aripo Savannas
- Nariva CD-ROM for secondary schools
- Biodiversity education & awareness

Matura NP



Matura National Park





**Aripo
Savannas: an
island in a
sea of
development**



Aripo Savannas Strict Nature Reserve



Who was involved and ASESAs planning and how?



- **Stakeholders:** Individuals and organisations with rights, responsibilities and interests in the Aripo Savannas
- **Facilitators:** CANARI in partnership with EMA and Forestry Division



Aripo Savannas Mgt. Planning



Key lessons - process

- Community mobilisation and engagement very demanding
- Capacity building needs allocation of sufficient resources
- Need to meet some government agencies individually

Nariva Swamp Managed Resource Protected Area



SMCs and capacity building workshops

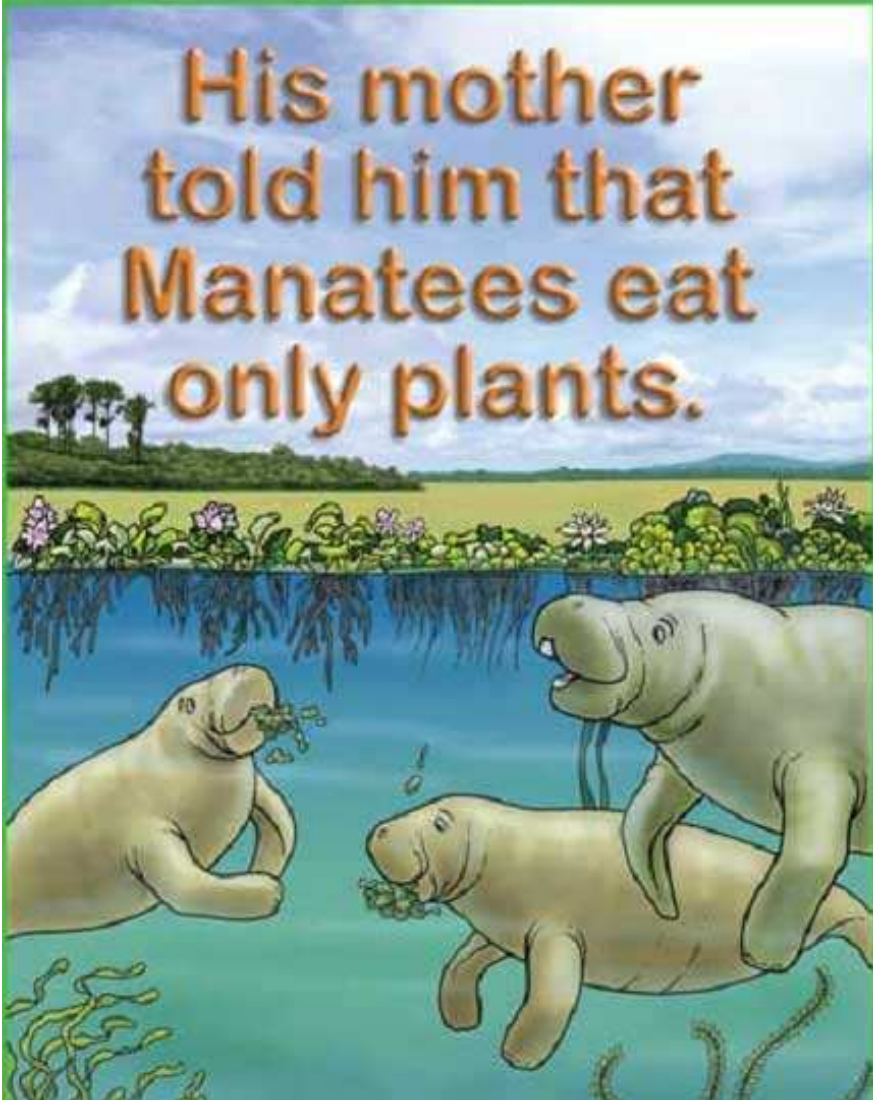


Buccoo Reef SMC



Matura SMC

Biodiversity Education & Awareness



Benefits

- Participation accruing benefits, goodwill and trust among stakeholders
- Building bank of information on ESSAs
- Sharing information with stakeholders
- Building local networks

Challenges

- **Capacity of all institutions to engage in Mgt., planning and research of ESSAs**
- **Institutional & Management arrangements**
- **Involving local communities in Mgt.**
- **Involving stakeholders who do not see biodiversity as part of their responsibility**

Mainstreaming

- CEC process & EIA
- SOE Report 2005 Northern Range Assessment
- Nariva CD-ROM
- UWI Biodiversity Centre
- Vision 2020
- Agricultural policy (draft)
- Trade & Industry Policy (draft)



Thankyou