



ICCA in Taiwan

Dau-Jye Lu, H.Y. Chang, C.L. Chao, Kurtis C.C. Pei,
G.S. Tung, Y.F. Hsu, T.M. Liu, M.C. Yeh, T. Sasala
cooperated with Tao Foundation

COP 11 CBD, Hyderabad, India
9 Oct 2012

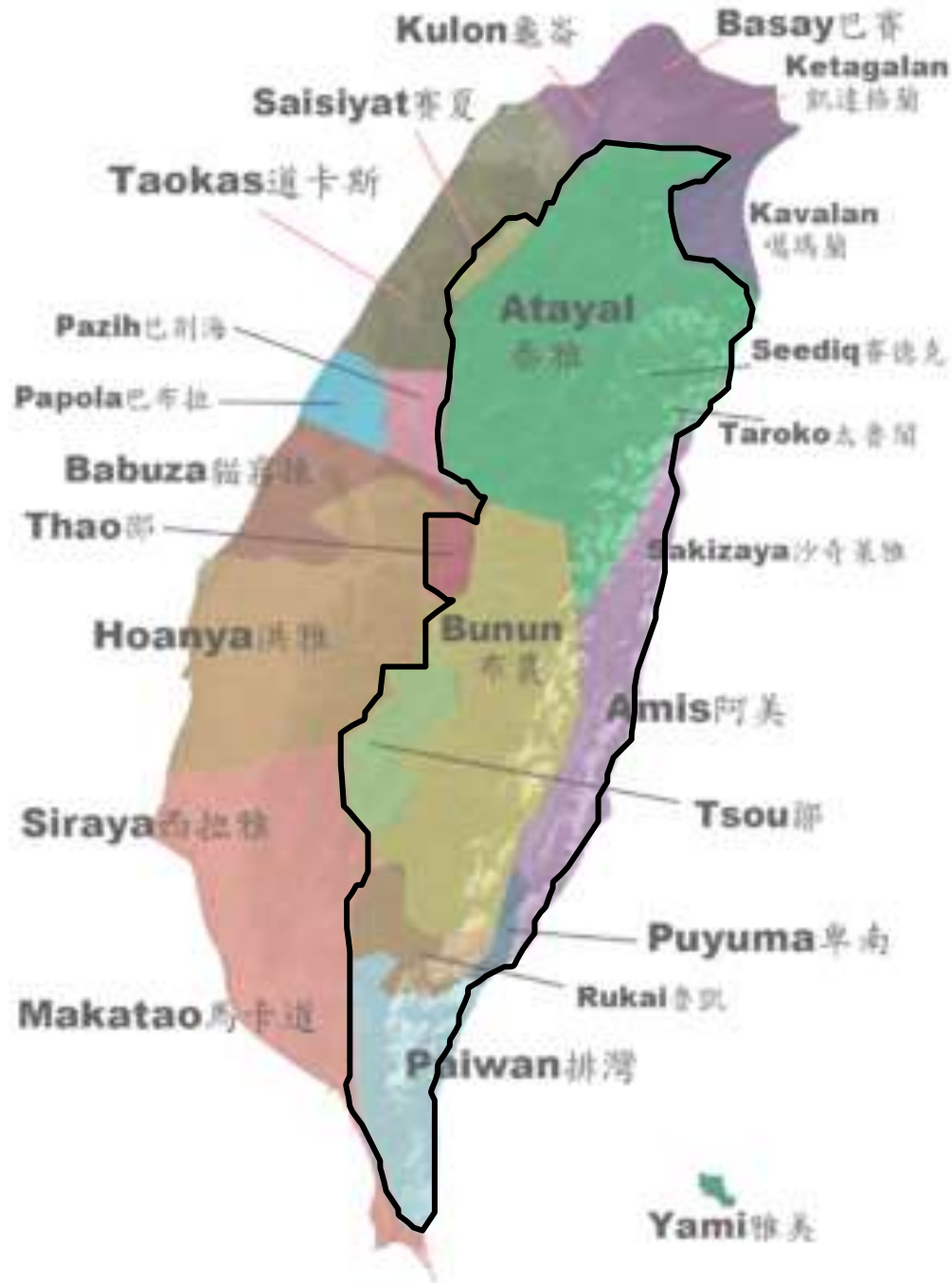
Locality of Taiwan



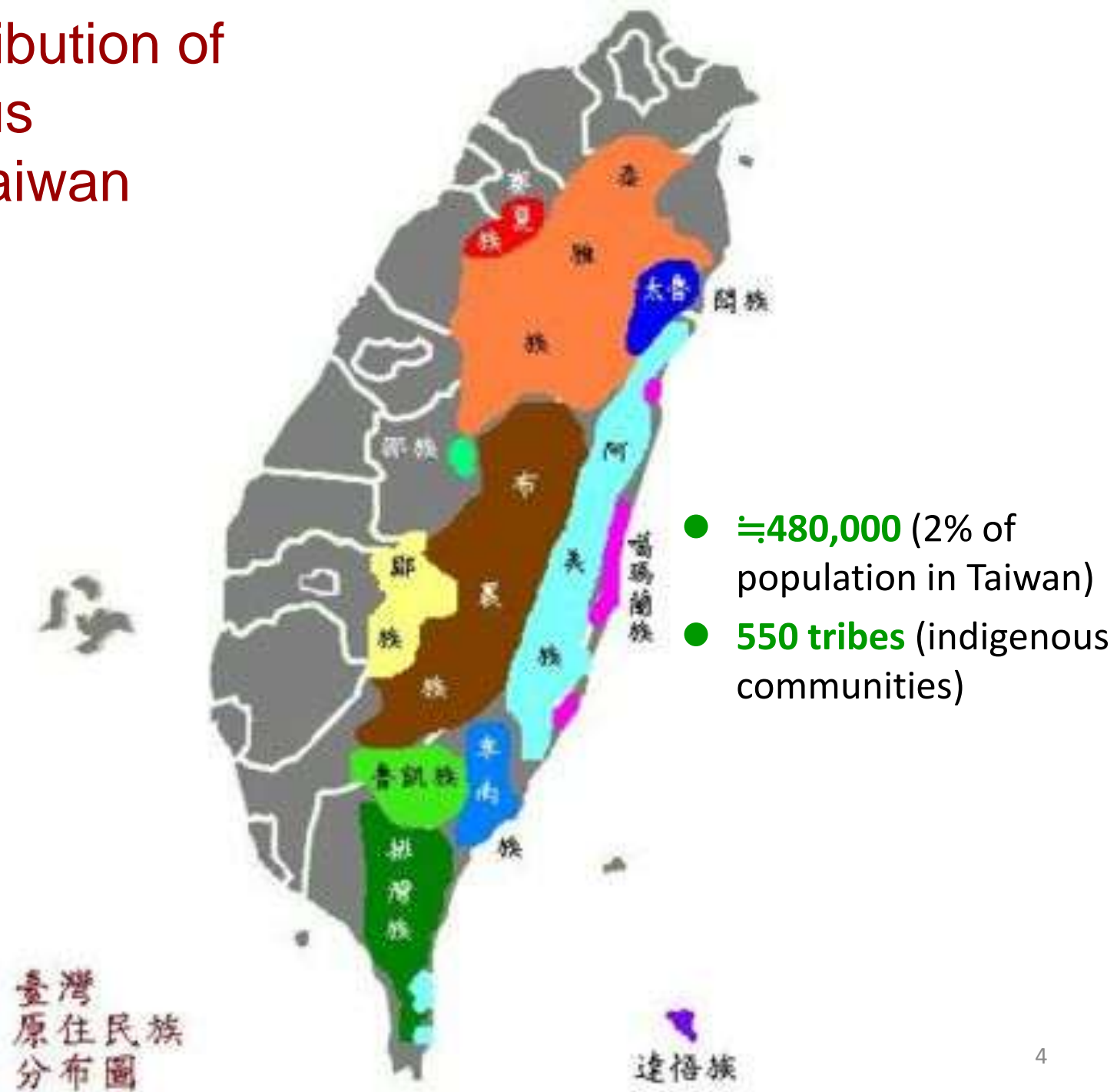
- Taiwan, an island located in the western Pacific between Japan and Philippines about 150 km off the east-southern coast of the Mainland China.
- about 36,179 KM²
- Population: 22.56 millions

Distribution of
Indigenous
Peoples in
Taiwan before
immigration of
Mainlanders
(Han Chinese)
in 400 years
ago

Pepo:
indigenous
people inhabited
in lower lands
in Taiwan in the
past



Current distribution of 14 indigenous peoples in Taiwan





A very high overlapped percentage between indigenous territories and PAs

There is a need to broaden governance types of PAs, particularly which can promote indigenous rights.

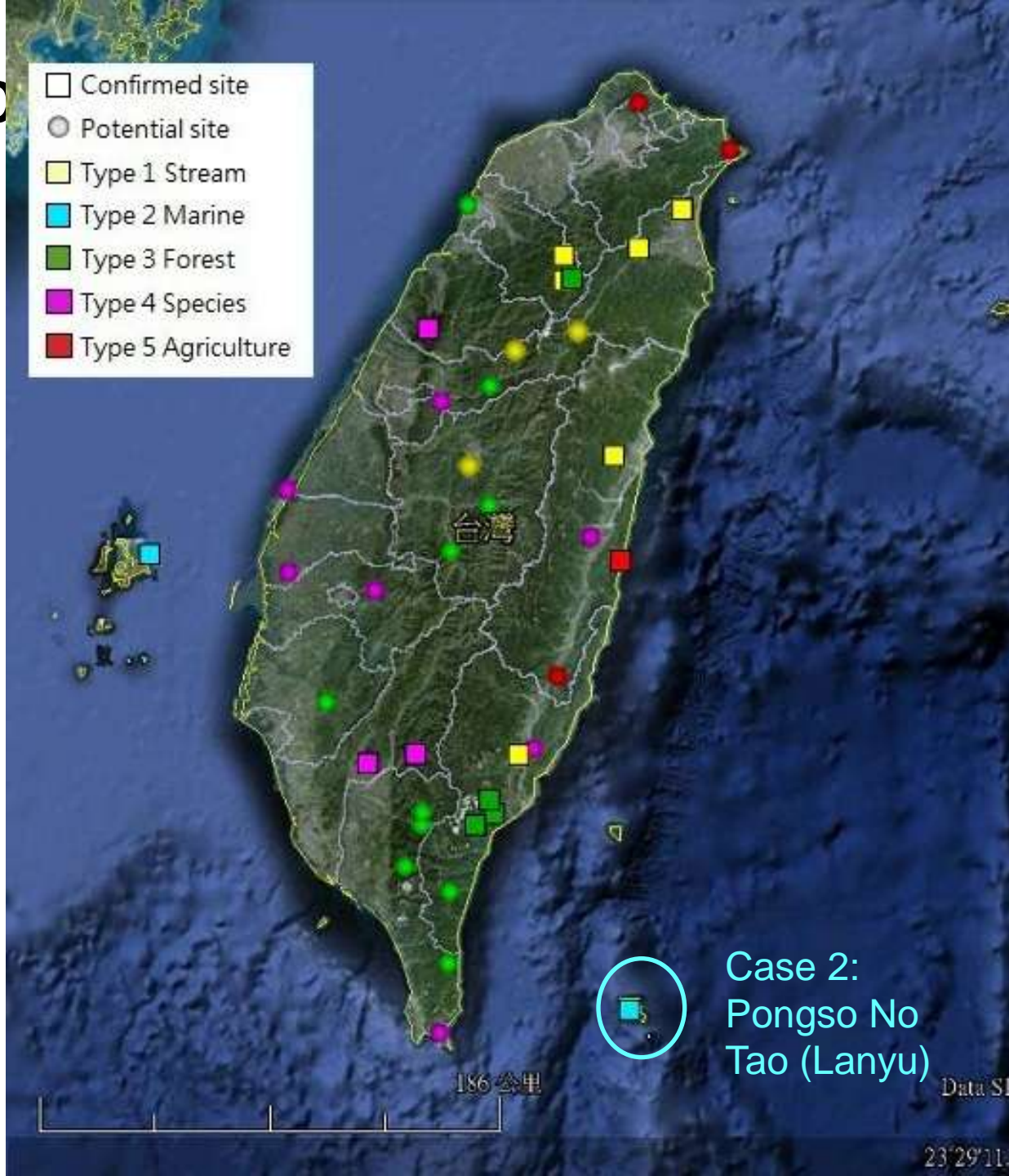
- Legend
- Nature Reserve
 - Forest Reserves
 - National Park
 - Wildlife Refuges
 - Major Wildlife Habitats
 - Central Mountain Range Conservation Corridor

臺灣原住民族分布圖

達悟族

Typ

of



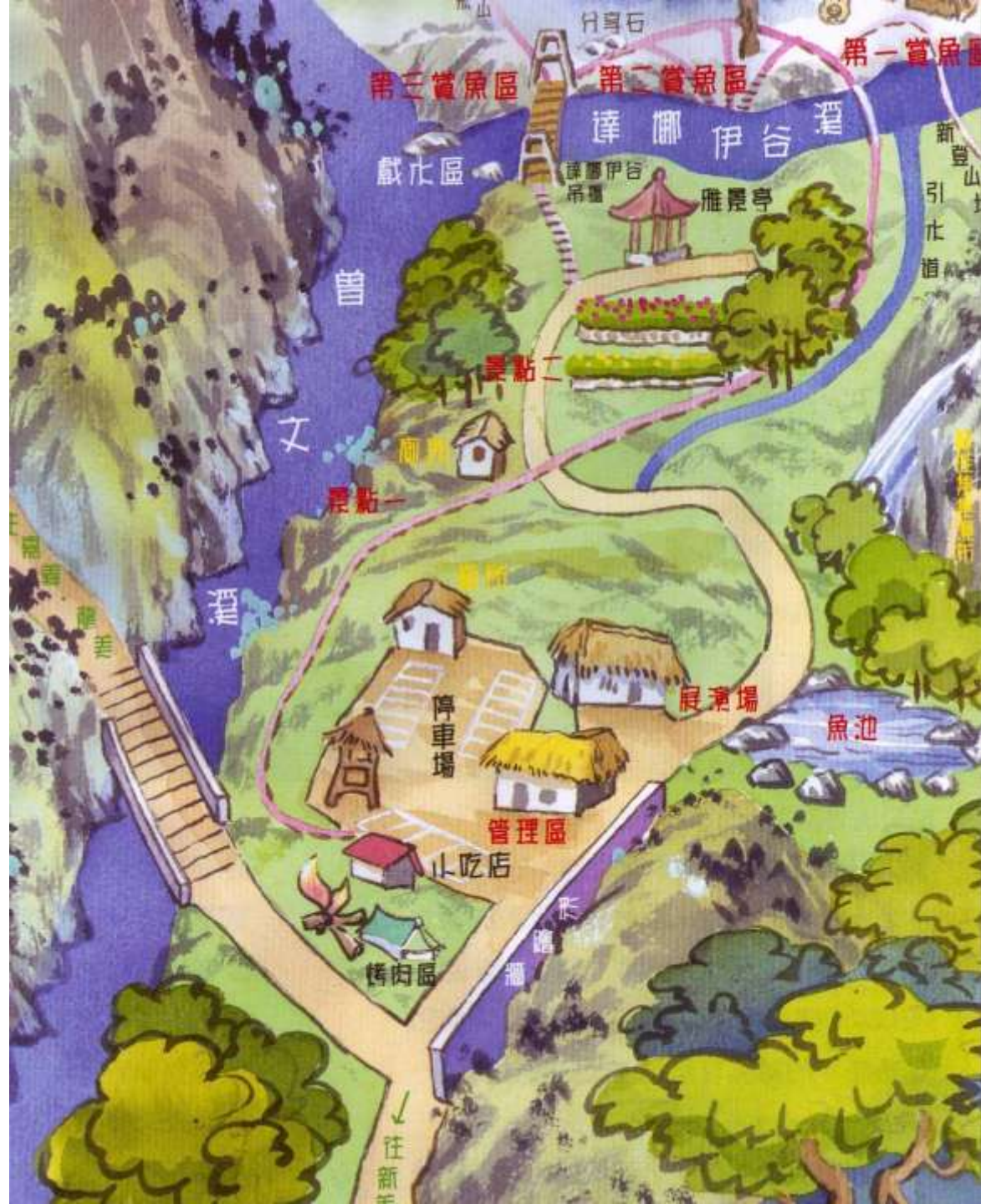
Stream Fishery Conservation

- The major type of ICCAs in Taiwan so far
- It protects fresh water fishes and their habitats based on the Fishery Act
- Most of this kind of initiatives are keen to integrate with local tourism development

Case of Danayiku (in Shan-mei)

- One of the earliest sites in Taiwan to protect fresh water fishes initiated in 1980s.
- It created the fashion of fish-watching.
- It was the first case to **integrate tourism and conservation** which has become one of the major models for indigenous development in Taiwan.
- It then became the Danayiku model for many indigenous communities to follow





第三賞魚區

第二賞魚區

第一賞魚區

達椰伊谷溪

戲水區

達椰伊谷亭

雅興亭

新豐山引水道

景點一

景點二

停車場

展覽場

魚池

管理區

小吃店

烤肉區

往新豐



5 15 '30





Traditional Farming System

- There are still some (remote) tribes maintaining traditional farming system, for example the millet in **Wu-Tai**
- The traditional farming system keeps diversity of millet (15: Wu-tai), has close links with ceremonies and traditional social organizations, can be food materials for tourism, better water & soil conservation on slopes, food security in typhoon



Pongso no Tao



Case of Pongso No Tao (Lanyu)

- Homeland of Tao
- A volcanic island of 45 Km² off the SE coast of Taiwan
- Rely on marine fish and taro for 6 villages in this island
- Most of its natural resources, for example, forest, marine and fresh water are still managed by the Tao based on traditional institutions



The taro fields and relevant fresh water are common property of a family group



- Tao people carve the



y

l

The village beachhead represents the institutions for the Tao to use marine resources



Traditional house of Tao





夏曼夫阿原

丟在我家門口的是讓

晚間新聞

PTS EVENING NEWS

The end!

Further enquiry: djlu@ntu.edu.tw