

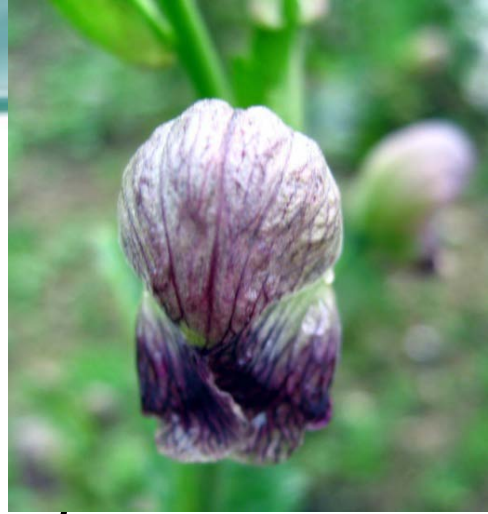
Medicinal Plant Conservation and ABS Horizontal - vertical Convergence



**XI Conference of Parties
CONVENTION ON BIOLOGICAL DIVERSITY
HYDERABAD INDIA 2012**



***Dr. Rakesh Shah
Member Secretary
Uttarakhand Biodiversity Board
Email; dr.rakeshkshah@gmail.com
Mobile: 9411112323***



*“The medicinal herbs
Penetrate and get diffused
Into all limbs
And joints of the sick,
And like a sharp
And Strong Moderator,
Destroy the disease.”*

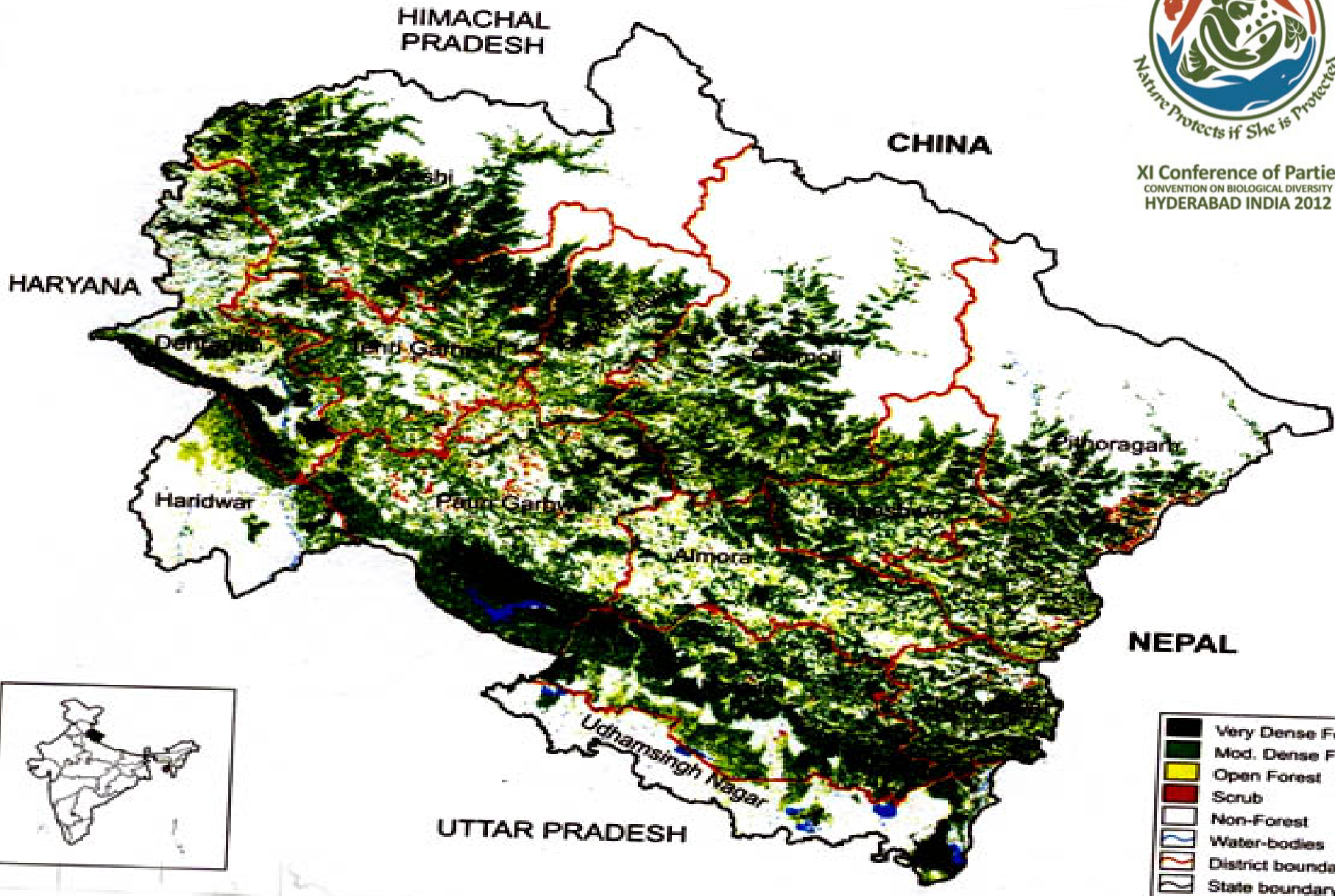
(Rig Veda. 10.97.12)



Uttarakhand



XI Conference of Parties
CONVENTION ON BIOLOGICAL DIVERSITY
HYDERABAD INDIA 2012



Partners in Conservation and ABS

- *Uttarakhand is a part of India Himalayan Region (IHR)- Biodiversity rich - 1383 medicinal plants are used for human ailments and About 364 plants are used in veterinary practices*
- *Conservation of medicinal plants (genetic resources) is spread across several line Ministries at the Centre: Environment and Forest, Health, Agriculture/Horticulture, Rural Development, Trade and Commerce,*
- *Allied institutions, such as the Botanical Survey of India, National Biodiversity Authority, National Medicinal plant board,*
- *Similarly, at the State level also we have a range of Departments: Environment and Forest, Health, Agriculture/Horticulture, Rural Development, Trade and Commerce*
- *State Biodiversity Boards, State Medicinal Plant Boards,*

GEF-UNDP-Govt. of India Medicinal Plants Conservation, Sustainable Use and Cultivation – Links with the Nagoya Protocol

Conservation and ABS in medicinal plants sector – multiple –stakeholders

Horizontal and Vertical convergence is a must

- *State Medicinal Plant Board*
- *State Biodiversity Board*
- *Horticulture Department – Krishi Vikas Scheme*
- *Health and AYUSH*
- *State Forest Department, State forest Training institutes, Working Plan Division*
- *Forest Development Corporation*
- *Kumaon Mandal Vikas Nigam(Kumaon Developmental Corporation)*
- *Herbal Research and developmental Institute (HRDI)*
- *Center for Aromatic Plants*
- *Bhesaj Vikas Ikai (MAP Developmental Unit)*

Additional stakeholders

- *Private sector*
- *For transborder work (Regional/ bilateral cooperation) – Nepal Govt*

Vertical Convergence

Article 13 of the Nagoya protocol - Competent National Authorities and Focal point

Article 14 of the Nagoya Protocol – ABS Clearinghouse and Information - sharing mechanisms

◦At the national level – National Biodiversity Authority

◦At the State level – State Biodiversity Board

◦At the village, block and district levels – Biodiversity Management Committee

Plural institutions with overlapping functions – JFMCs/ Van Panchayats

◦UK SBB – Converting JFMCs/ Van Panchayats into BMCs; Capacity development – VBC, Exposure visits, preparation of PBRs and BCPs

India is a large country – genetic resource, private sector’s concern about delays in clearing applications

Can these BMCs serve as focal points at this level which is closest to the knowledge – holder/ provider - nodes for information sharing?

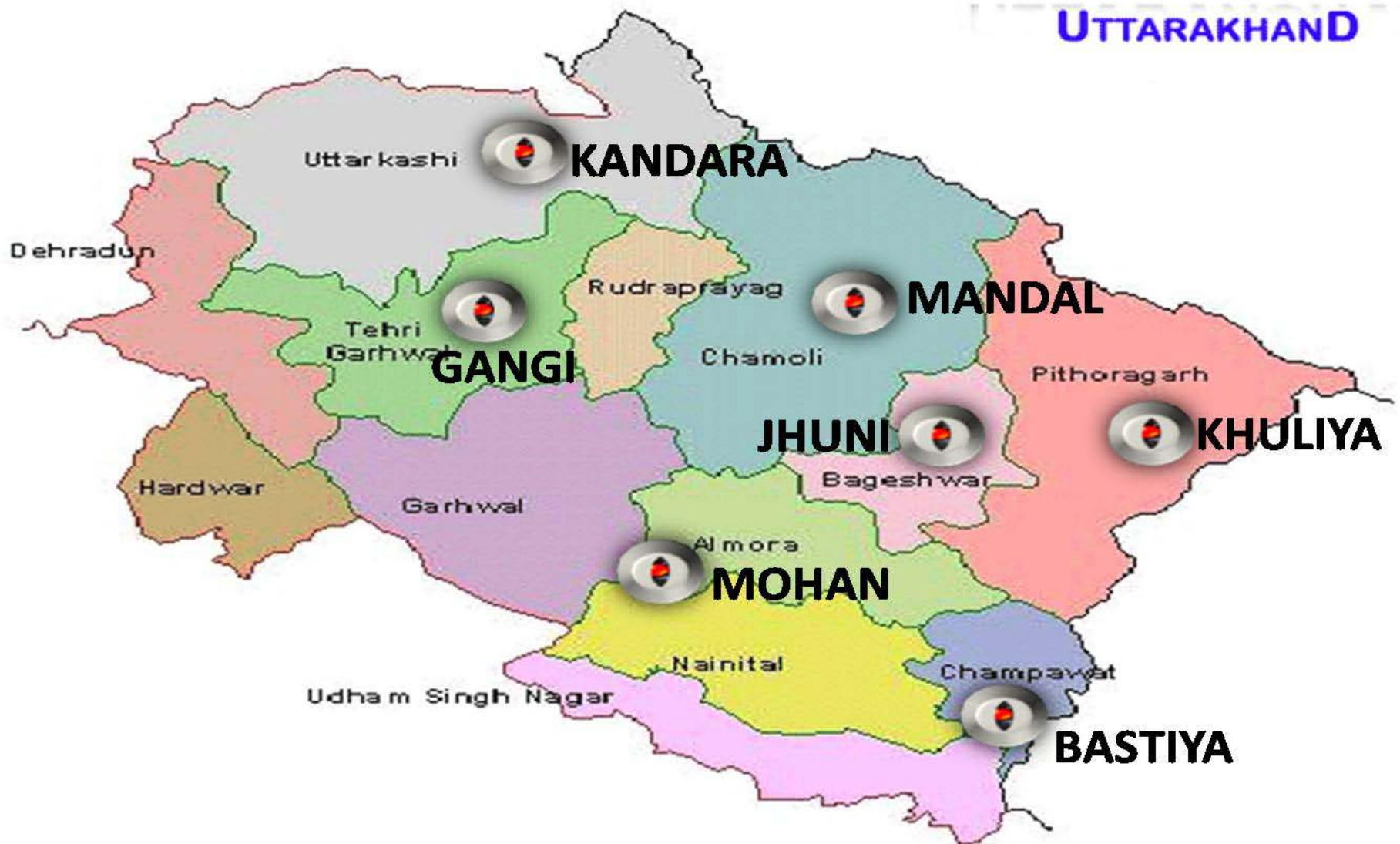
Role of different stakeholders in Medicinal Plant Conservation

- *In-situ conservation and ex-situ conservation is taken up on sizable scale.*
- *High priority is given for the management, sustainable collection and conservation of medicinal plants found in the wild and the concept of CDH is incorporated in the management plans of the forests divisions*
- *Network of Herbal Gardens and Botanic Gardens are established across the state.*
- *Budgetary provisions are made by state government for various department dealing with the MAP.*
- *Special Financial Scheme naming Chief Minister Medicinal Plant Scheme (Mukhya Mantri Jari-butti Yojana) has been started only to address the needs of the sector.*

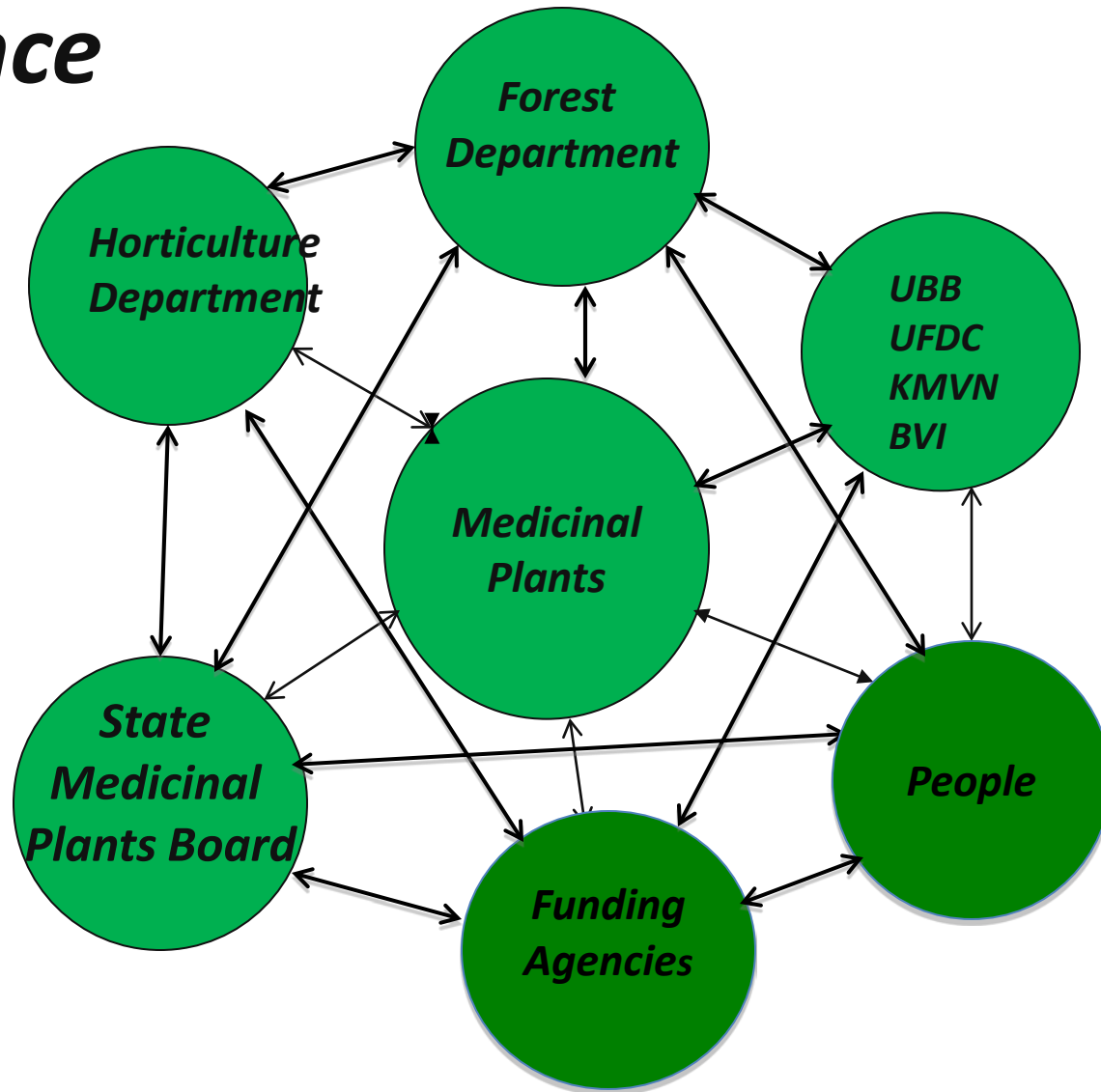
Role of different stakeholders in Medicinal Plant Conservation

- *State Medicinal Plants Board was restructured as Nodal Agency for MAPs.*
- *Forest Produce Transit Rules are relaxed to facilitate the MAP farmers.*
- *Value chain assessment is done to find out the status of various actors in the chain and leverage the financial return to the local people.*
- *Collection of MAP from the wild is done only by the bonafied inhabitants of the state.*
- *Registration of MAP cultivators is done by HRDI*
- *Concept of Medicinal Plant Mandies is introduced with three fixed mandies and 62 floating mandies working across the state*

MPCA SITES IN UTTARAKHAND



Convergence



- *Planning at the grass-root*
- *Convergence opportunities matrix*



Corydalis meifolia



Evolvulus alsinoides

Arnebia benthamii



Podophyllum hexandrum





Didymocarpus pedicellata

Gentiana carinata



Habenaria intermedia

Roscoea alpina



Selinium tenuifolium



Rauvolfia serpentina



Dioscorea deltoidea



*The medicinal herbs of the motherland
bearing a hundred names
uses and locations
and thousands of germinations
render a hundredfold benefits
and transform the ailing patient
into a healthy and strong man ”*

(Rig. 10.97.2)

Thanks

